

Doc ID: 004864230001 Type: GEN
 Kind: CORNER
 Recorded: 07/27/2012 at 03:32:11 PM
 Fee Amt: \$7.00 Page 1 of 1
 Black Hawk County Iowa
 JUDITH A MCCARTHY RECORDER
 File **2013-00001968**

*
 Paul H. Helland, 1107 Technology Parkway, Cedar Falls, Iowa 50613-6951, (319)-266-0161

UNITED STATES PUBLIC LAND SURVEY CORNER CERTIFICATE OF

LAND SURVEY MONUMENTS SITUATED IN SECTION NO. 14, TOWNSHIP NO. 89 NORTH, RANGE
 NO. 12 WEST OF THE FIFTH PRINCIPAL MERIDIAN, BLACK HAWK COUNTY, IOWA.
 PREVIOUSLY RECORDED IN N/A

(SHOW REASON FOR PREPARING THIS CERTIFICATE, THE EVIDENCE AND DETAILED PROCEDURES USED IN ESTABLISHING THE
 CORNER POSITIONS AND MONUMENTATION FOUND OR PLACED.)

MONUMENT DESCRIPTION AND REMARKS:

NO USPLSCC ON FILE. SURVEY COMPLETED IN THE SE 1/4 OF SEC. 15-T89N-R12W & IN THE NW 1/4 OF SEC.
 14-T89N-R12W.

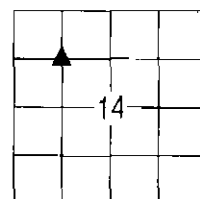
- **NE CORNER SW 1/4 NW 1/4:** NO BLACK HAWK COUNTY ENGINEER TIES AVAILABLE. PLAT OF SURVEY FILE
 2011-00012887 DATED 11/24/2010 CALLS FOR [SET NO. 4 REBAR w/YPC #8812]. FOUND NO. 4 REBAR w/YPC #8812.

PLAN VIEW

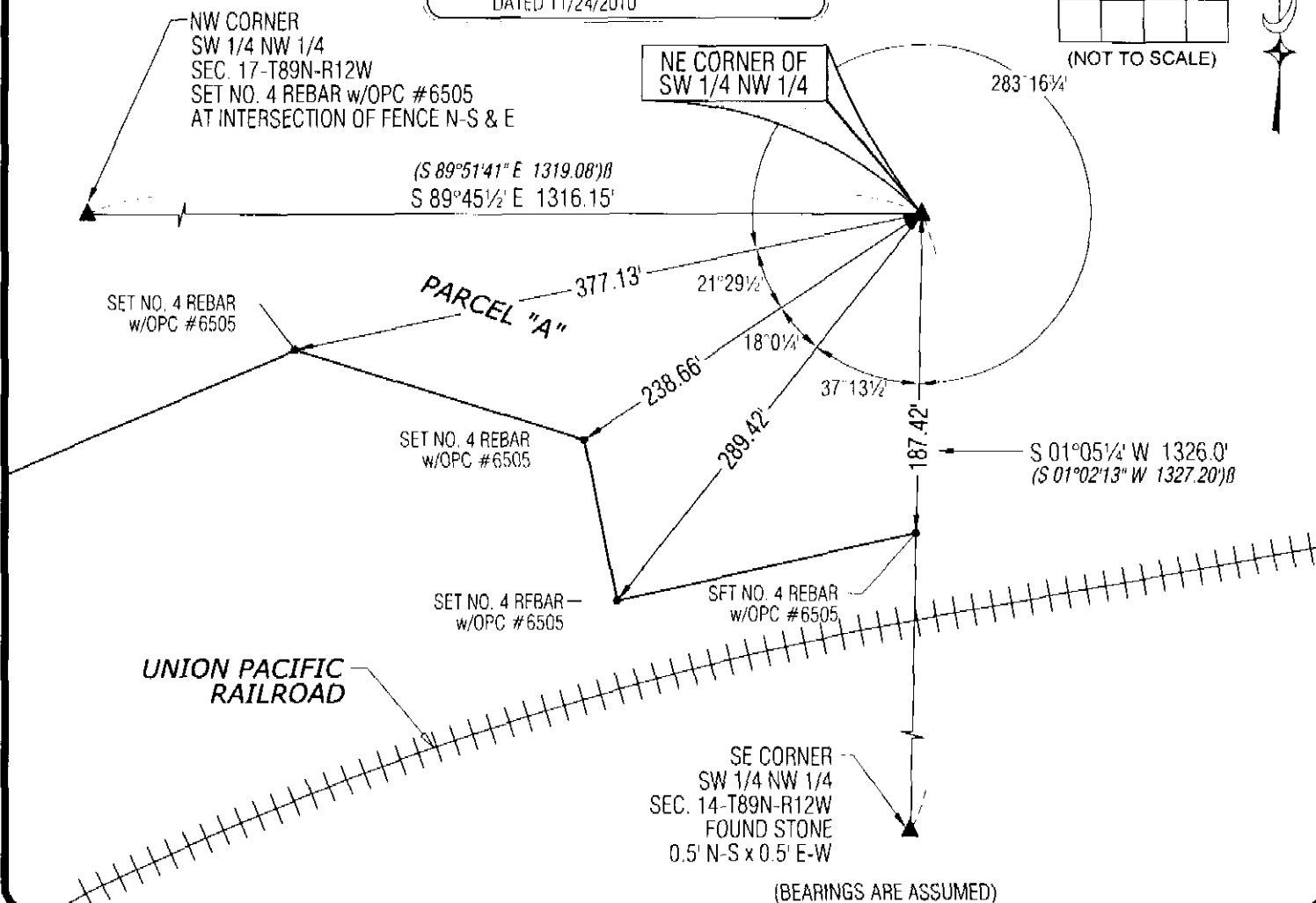
(SHOW A MINIMUM OF THREE REFERENCE TIES TO DURABLE PHYSICAL OBJECTS, RELEVANT MONUMENTS AND PHYSICAL
 CONDITIONS THAT WILL ENABLE RECOVERY OF THE CORNER.)

LEGEND

(0.0') PER PLAT OF SURVEY FILE 2011-00012887
 DATED 11/24/2010



(NOT TO SCALE)

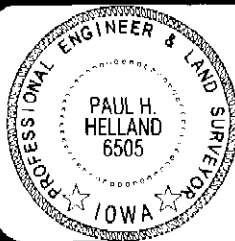


(BEARINGS ARE ASSUMED)



HELLAND ENGINEERING & SURVEYING, LTD.
 1107 Technology Parkway
 Cedar Falls, Iowa 50613-6951
 (319)-266-0161

SHINER = 8D NAIL & 1 5/16" Ø METAL SHINER
 BRASS TAG = 8D NAIL & 13/16" Ø BRASS TAG
 OPC = PLASTIC CAP (O=ORANGE, R=RED, Y=YELLOW)
 (00') RECORDED AS FILE NAME: 12-17206.DWG



I hereby certify that this land surveying document was prepared
 and the related survey work was performed by me or under my
 direct personal supervision and that I am a duly licensed Land
 Surveyor under the laws of the State of Iowa.

Paul H. Helland 7/19/12
 Paul H. Helland
 License Number 6505
 My license renewal date is December 31, 2013.
 All pages or sheets are covered by this seal except:

LIST CORNERS TO BE INDEXED

CORNER	SECTION	TOWNSHIP	RANGE
NE COR. SW 1/4 NW 1/4	14	89N	12W
SE COR. NW 1/4 NW 1/4	14	89N	12W
SW COR. NE 1/4 NW 1/4	14	89N	12W
NW COR. SE 1/4 NE 1/4	14	89N	12W

File Number: 2013-00001968 Seq: 1