

U.S. (IA.) PUBLIC LAND SURVEY  
CORNER CERTIFICATE (Ia. 355.11)

B.H. Co. PROJECT: LFM-0514--7X-07

RAYMOND RD. (V49) RESURFACING PROJECT (2018)

H.M.A. RESURFACING w/MILLING

## INDEX OF ABBREVIATIONS

(M) = "Measured" Dimension  
(P) = "Platted" Dimension  
(R) = "Record" Dimension  
(C) = "Calculated" Dimension  
"IGS" = Iowa Geodetic Survey  
"WPA" = Works Progress Admin. Surveys (late 1930's to early 1940's)  
"G" = per George Miller Survey (BHco Surveyor 1858-1860)  
"B" = per John Ball Survey (BHco Surveyor 1866-1891)  
"N" = per Nathan Barber Survey (BHco Surveyor 1908-1931)

"NP" = Reflectorless EDM Meas  
"MLM" = Indirect Measure  
"CM" = Concrete Monument  
"SM" = Survey Marker Spike/Tag  
"PK" = PK/MAG Nail Brand Style



Doc ID: 009371790002 Type: GEN  
Recorded: 08/31/2018 at 12:43:50 PM  
Fee Amt: \$0.00 Page 1 of 2  
Black Hawk County Iowa  
SANDIE L. SMITH RECORDER

File 2019-00003627

Land Survey Monument(s) situated in Section 14, Township 89 N., Range 12 W., of the Fifth Principal Meridian (5th P.M.), BLACK HAWK County, Iowa.  
Previously recorded in FILE            Book 2012, Page 06584, in County Recorder's Office.  
(Show reason for preparing this certificate): The corner monument has been Replaced or Modified, per Ia. Code 355.11(1)(c)

(Evidence and detailed procedures used in establishing the corner position(s) and monumentation found or placed.)

Monument Description and Remarks: N. 16TH COR., EAST:

CORNER RESET & TIES UPDATED PER RAYMOND ROAD H.M.A. RESURF. PROJECT LFM-0514--7X-07.  
PRIOR TO PROJ., FOUND #4 REBAR w/Y.P.C. SPLIT/BROKE @ 0.07' EAST OF AVG. EAST LINE N.E.  
1/4 AS PER CURRENT CORNER CERTIFICATE 2012-00006584 ON FILE, ALSO FOUND PK-NAIL @  
0.13' WEST OF AVG. EAST LINE N.E. 1/4. RESET 6" LONG MAG SPIKE WITH MTL. BHco. P.L.S.  
#15748 WASHER PER "IaRTN" RTK-NA11 AVG. (OF FOUND REBAR & PK-NAIL) @ ±0.8' EAST OF C.L.  
H.M.A. JOINT.

Page #1 of 2

Software: TopSurv v.8.2.3 w/FC-2500

Project Point ID: #2992

## PLAN VIEW

"NOT TO SCALE"

BHco Hist. Ties: per prev. Cor. Cert.(2012)

FIELD BOOK: (n/a) per draft cert. (L.D.)

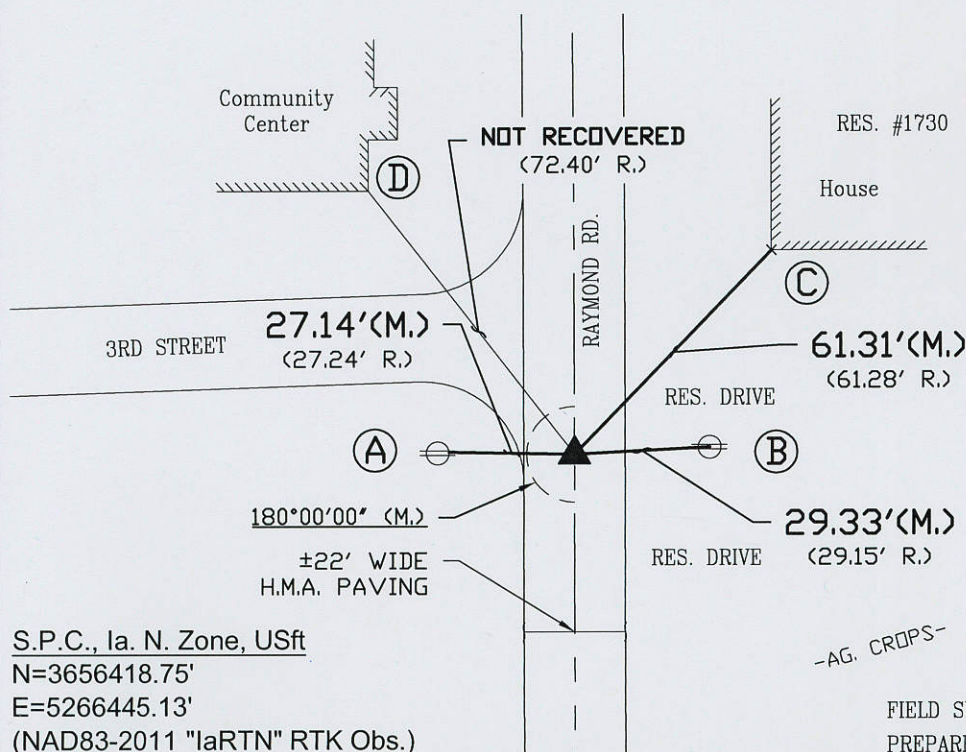
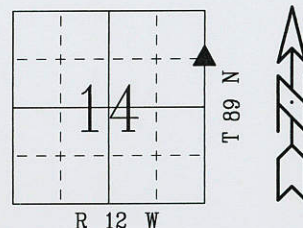
(Show a minimum of three reference ties to durable physical objects, relevant monuments and physical conditions that will enable recovery of the corner.)

1.) TIES PER EDM MEASURE IN PRISM MODE, WHILE UTILIZING "INDIRECT" (MLM) MEASURE, WITH ALL DISTANCES PLUMB/HORIZ. (HD), UNLESS DENOTED.

2.) SECTION LINE MEASURE REFERS TO "LOCAL GROUND" DIST. AND INCLUDES ELLIPSOIDAL (COMBINED) SCALE FACTOR FROM S.P.C. GRID INVERSE (AS OBSERVED), PER AVG. SCALE FACTOR = 1.000089228991x

NE. COR.  
(SECT. 14-T89-R12)  
1331.82' (M./grnd)

E. COR.  
(SECT. 14-T89-R12)  
1331.59' (M./grnd)



- (A) FND. PK-NAIL w/WASHER S.W. FACE P.P. @ 2.6' HT.
- (B) FND. PK-NAIL w/WASHER W. FACE P.P. @ 3.4' HT.
- (C) FND. S.W. COR. OF HOUSE FOUNDATION @ 1' HT.
- (D) NOT RECOVERED/MEASURED: NEW HIGHER SIDEWALK HAS OBSTRUCTED MEASUREMENT OF BUILDING CORNER.

FIELD SURVEY: L.D. & B.A. 8/16/18  
PREPARED BY: G.T. & L.D. 8/27/18

## CERTIFICATION

I hereby certify that this land surveying document was prepared and the related survey work was performed by me or under my direct personal supervision and that I am a duly licensed Land Surveyor under the laws of the State of Iowa.

*Geoffrey Allen Tinker* 08/31/2018  
Geoffrey Allen Tinker (date)  
License Number 15748  
My license renewal date is December 31, 2018  
Pages or sheets covered by this seal:  
This Land Corner Certificate Only.



## LIST CORNERS TO BE INDEXED

Corner	Section -	Township -	Range
SE Cor.	14	89 N	12 W
NE 1/4, NE 1/4			
SW Cor.	13	89 N	12 W
NW 1/4, NW 1/4			



PREPARED BY:  
BLACK HAWK COUNTY  
ENGINEER'S DEPT.  
316 E. FIFTH ST. RM. 211  
WATERLOO, IA. 50703  
PH. 319-833-3008  
FAX. 319-833-3139  
surveyor@co.black-hawk.ia.us



U.S. (IA.) PUBLIC LAND SURVEY  
CORNER CERTIFICATE (Ia. 355.11)

B.H. Co. PROJECT: LFM-0514--7X-07

RAYMOND RD. (V49) RESURFACING PROJECT (2018)  
H.M.A. RESURFACING w/MILLING

INDEX OF ABBREVIATIONS

(M) = "Measured" Dimension  
(P) = "Platted" Dimension  
(R) = "Record" Dimension  
(C) = "Calculated" Dimension  
"IGS" = Iowa Geodetic Survey  
"WPA" = Works Progress Admin. Surveys (late 1930's to early 1940's)  
"G" = per George Miller Survey (BHco Surveyor 1858-1860)  
"B" = per John Ball Survey (BHco Surveyor 1866-1891)  
"N" = per Nathan Barber Survey (BHco Surveyor 1908-1931)  
"NP" = Reflectorless EDM Meas  
"MLM" = Indirect Measure  
"CM" = Concrete Monument  
"SM" = Survey Marker Spike/Tag  
"PK" = PK/MAG Nail Brand Style

Land Survey Monument(s) situated in Section 14, Township 89 N., Range 12 W., of the Fifth Principal Meridian (5th P.M.), BLACK HAWK County, Iowa.  
Previously recorded in FILE Book 2012, Page 06584, in County Recorder's Office.  
(Show reason for preparing this certificate): The corner monument has been Replaced or Modified, per Ia. Code 355.11(1)(c)

(Evidence and detailed procedures used in establishing the corner position(s) and monumentation found or placed.)

Monument Description and Remarks: COR. AND C.L. P.I. GEOMETRICS;  
REFERENCES TO P.I. GEOM. PROVIDED FOR AS CONSTRUCTED (AS-BUILD) DETAILS RELATIVE TO  
LAND CORNER TIE DETAILS PROVIDED ON p.#1. RESET CUT 'X' IN NEW R.R. P.C.C. PANEL PER  
FOUND CUT 'X' DURING PREMIL. SURVEY (AVG. DOUBLE OCCUPIED NA-11).

Page #2 of 2

Software: TopSurv v.8.2.3 w/FC-2500

Project Point ID: #2992

PLAN VIEW

"NOT TO SCALE"

BHco Hist. Ties: per prev. Cor. Cert. (2012)

FIELD BOOK: (n/a) per draft cert. (L.D.)

(Show a minimum of three reference ties to durable physical objects, relevant monuments and physical conditions that will enable recovery of the corner.)

- 1.) TIES PER EDM MEASURE IN PRISM MODE, WHILE UTILIZING "INDIRECT" (MLM) MEASURE, WITH ALL DISTANCES PLUMB/HORIZ. (HD), UNLESS DENOTED.
- 2.) SECTION LINE MEASURE REFERS TO "LOCAL GROUND" DIST. AND INCLUDES ELLIPSOIDAL (COMBINED) SCALE FACTOR FROM S.P.C. GRID INVERSE (AS OBSERVED), PER AVG. SCALE FACTOR = 1.000089228991x
- 3.) P.I. DETAILS PROVIDED WITH LAND CORNER CERT. FOR GEOM. (C.L. H.M.A. PAVEMENT) REFERENCES AS CONSTRUCTED.

