

Doc ID: 004602130001 Type: GEN  
Kind: CORNER  
Recorded: 10/12/2011 at 10:07:15 AM  
Fee Amt: \$7.00 Page 1 of 1  
Black Hawk County Iowa  
JUDITH A MCCARTHY RECORDER  
File **2012-00006584**

Recorded By: Michael R. Fagle, P.L.S.      \* AECOM, 501 Sycamore St., Suite 222, Waterloo, Iowa 50703      1-319-232-6531

UNITED STATES PUBLIC LAND SURVEY CORNER CERTIFICATE  
OF

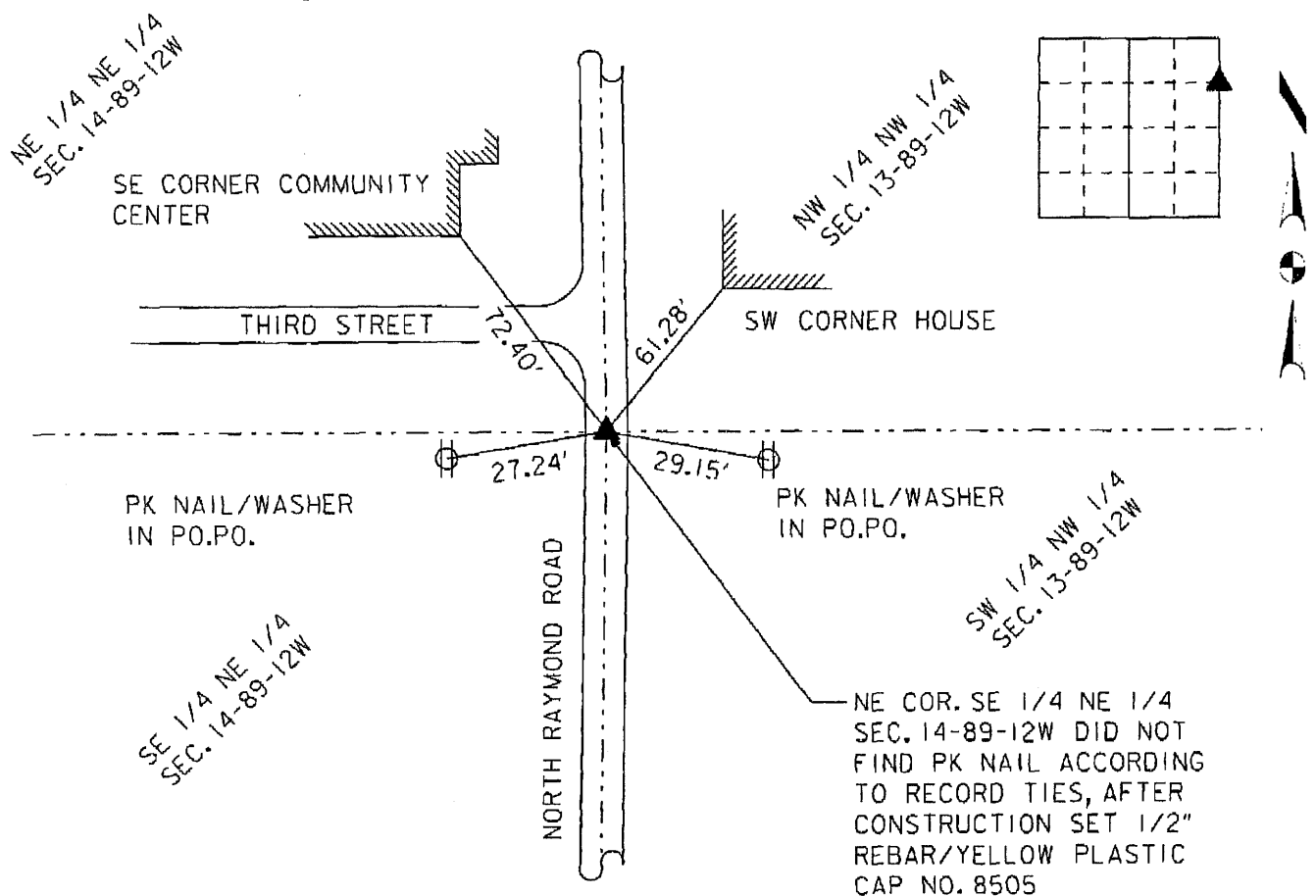
Land Survey Monuments situated in Section 14, Township 89 North,  
Range 12 West, of the Fifth Principal Meridian, Black Hawk  
County, Iowa. Previously recorded in Miscellaneous Book 313 Page 544  
in County Engineer's Office. (Book, Page, Document Number, etc.)

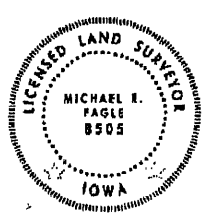
(Show reason for preparing this certificate, the evidence and detailed procedures used in establishing the corner positions and monumentation found or placed.)

Monument Description and Remarks: Did not find PK nail according to record ties,  
after the complete of construction on the Black Hawk County, North Raymond  
Road (Project No. LFM-95--7X), a 1/2" x 24" rebar with yellow plastic cap No.  
8508 was set.

PLAN - VIEW

(Show a minimum of three reference ties to durable physical objects, relevant monuments and physical conditions that will enable recovery of the corner.)





I hereby certify that this Land Surveying document was prepared by me or under my direct personal supervision and that I am a duly Licensed Land Surveyor under the laws of the State of Iowa.

*Michael R. Fagle*      10-04-2011  
MICHAEL R. FAGLE      Date

License number 8505  
My license renewal date is December 31, 2012  
Pages or sheets covered by this seal:

THIS SHEET

List Corners to be Indexed

Corners	Section	Twp	Range
Northeast corner of the Southeast 1/4 of the Northeast 1/4	14	T 89 N	R 12 W