

Doc ID: 010284480001 Type: GEN  
Recorded: 10/05/2021 at 01:29:05 PM  
Fee Amt: \$7.00 Page 1 of 1  
Black Hawk County Iowa  
SANDIE L. SMITH RECORDER  
File 2022-00007424

\* WAYNE CLAASSEN ENGINEERING AND SURVEYING, INC.  
P.O. BOX 898 WATERLOO, IOWA 50704-0898

PHONE: (VOICE) 319-235-6294  
(FAX) 319-235-0028

UNITED STATES PUBLIC LAND SURVEY CORNER CERTIFICATE

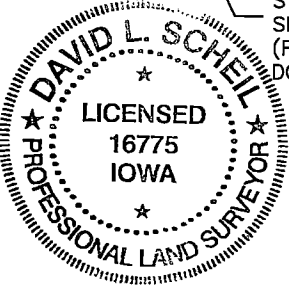
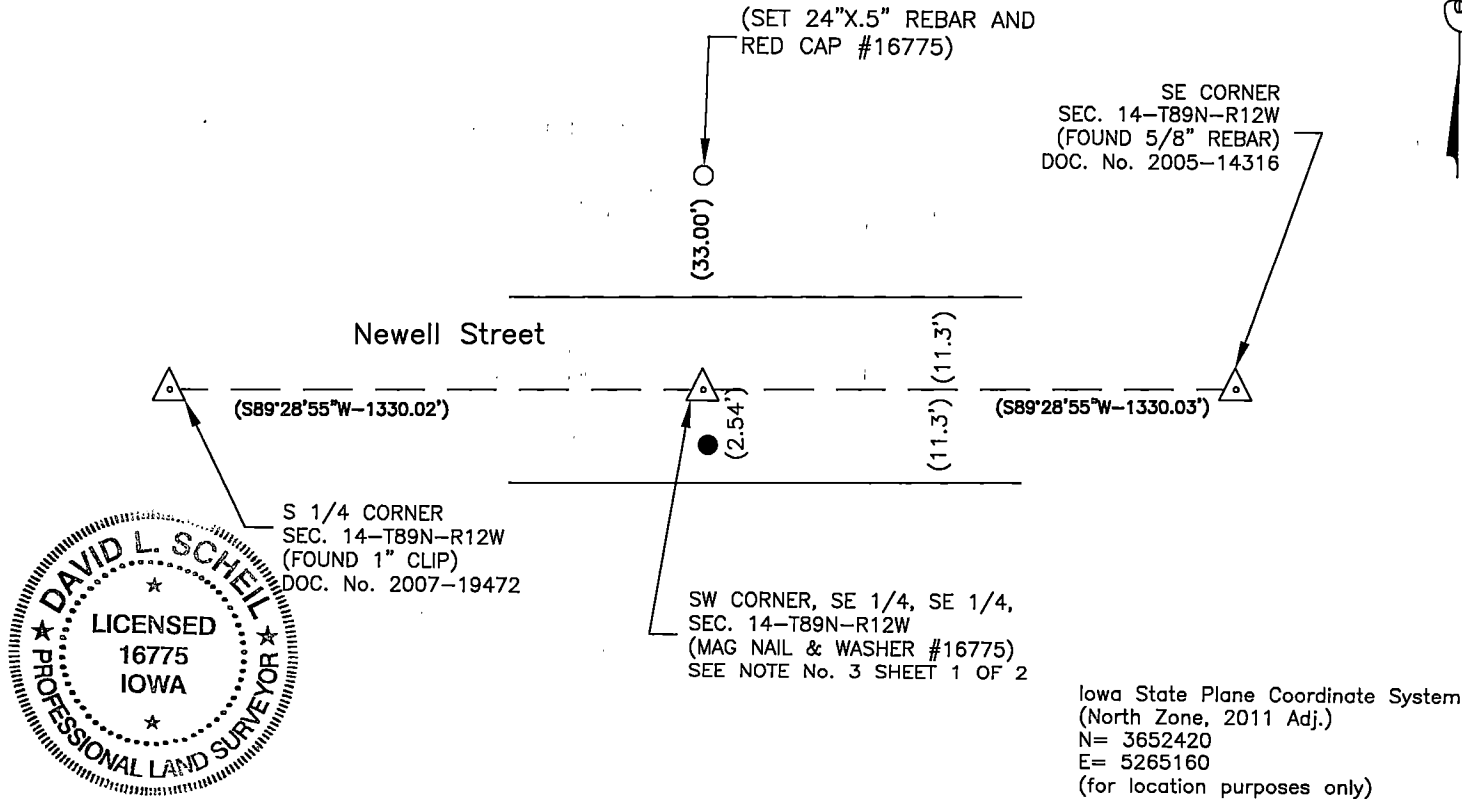
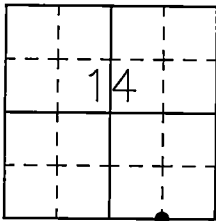
Land Survey Monuments situated in Section 14, Township 89 North, Range 12 West, of the Fifth Principal Meridian, Black Hawk County, Iowa.  
Previously recorded in (book, page, document number, etc.) in County Recorder's Office.

Monument Description and Remarks

Kess and Associates perform a boundary survey that is recorded in Document No. 2014-21094. The Plat indicates that a set "Alum ID Cap Iowa-9961" was set at the midpoint between the S 1/4 corner and the SE corner of Section 14. The alum cap was found to be set 2.54' South of the actual midpoint. Therefore, a mag nail and washer #16775 was set at the proper location.

- Reason for filing certificate:
- ☒ There is no certificate on file with the Recorder's Office.
  - ☐ Accepts corner position which differs from the one shown in above document.
  - ☐ The corner monument was replaced or modified.
  - ☐ The reference ties in above document were incorrect or missing.
- - DENOTES FOUND 2" ALUMINUM DISK

PLAN - VIEW



I hereby certify that this land surveying document was prepared and the related survey work was performed by me or under my direct personal supervision and that I am a duly Licensed Land Surveyor under the laws of the State of Iowa.

Signature: David L. Scheil  
David L. Scheil, L.S.  
Date: OCT 01, 2021 Lic. No. 16775

Pages or Sheets Covered by this Seal: THIS SHEET ONLY.  
My license renewal date is December 31, 2022

SEAL

List Corners to be Indexed			
Corners	Section	Twp	Range
SW CORNER, SE 1/4, SE 1/4,	14	89 N	12 W
NW CORNER, NW 1/4, NE 1/4,	23	89 N	12 W