



Doc ID: 004602120001 Type: GEN
Kind: CORNER
Recorded: 10/12/2011 at 10:06:53 AM
Fee Amt: \$7.00 Page 1 of 1
Black Hawk County Iowa
JUDITH A MCCARTHY RECORDER

File# 2012-00006583

Recorded By: Michael R. Fagle, P.L.S.

AECOM, 501 Sycamore St., Suite 222, Waterloo, Iowa 50703

1-319-232-6531

UNITED STATES PUBLIC LAND SURVEY CORNER CERTIFICATE OF

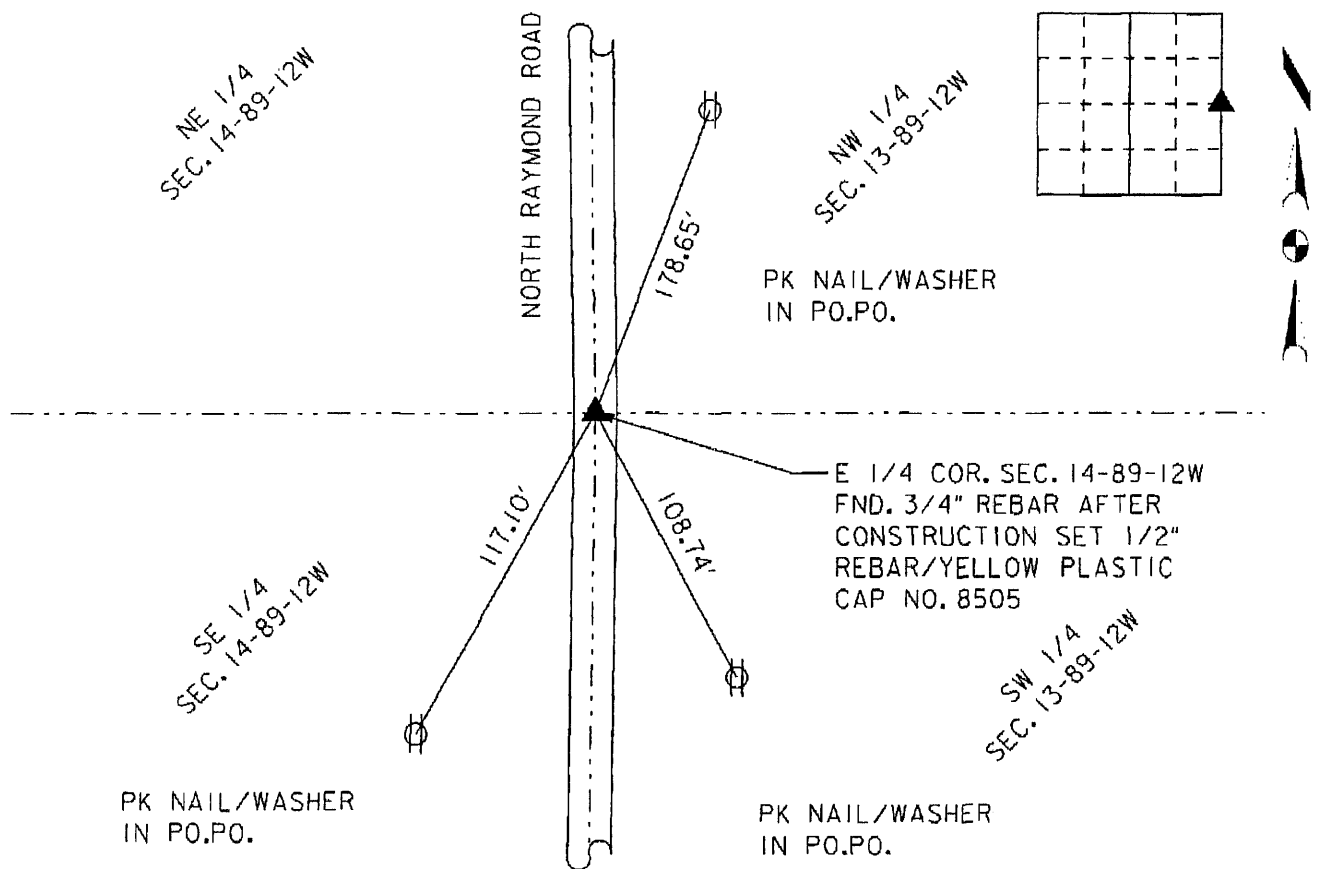
Land Survey Monuments situated in Section 14, Township 89 North,
Range 12 West, of the Fifth Principal Meridian, Black Hawk
County, Iowa. Previously recorded in Miscellaneous Book 337 Page 670
in County Engineer's Office. (Book, Page, Document Number, etc.)

(Show reason for preparing this certificate, the evidence and detailed procedures used in establishing the corner positions and monumentation found or placed.)

Monument Description and Remarks: Found 3/4" rebar, after construction was complete on Black Hawk County, North Raymond Road (Project No. LFM-95--7X), a 1/2" x 24" rebar with yellow plastic cap No. 8508 was set.

PLAN - VIEW

(Show a minimum of three reference ties to durable physical objects, relevant monuments and physical conditions that will enable recovery of the corner.)



	I hereby certify that this Land Surveying document was prepared by me or under my direct personal supervision and that I am a duly Licensed Land Surveyor under the laws of the State of Iowa.	
	<u>Michael R. Fagle</u>	<u>10-04-2011</u>
	MICHAEL R. FAGLE	Date
	License number 8505	
	My license renewal date is December 31, 2012	
Pages or sheets covered by this seal:		
<u>THIS SHEET</u>		

List Corners to be Indexed			
Corners	Section	Twp	Range
East 1/4 Corner	14	T 89 N	R 12 W