



Doc ID: 004864180001 Type: GEN
Kind: CORNER
Recorded: 07/27/2012 at 03:31:17 PM
Fee Amt: \$7.00 Page 1 of 1
Black Hawk County Iowa
JUDITH A MCCARTHY RECORDER

File **2013-00001963**

Paul H. Hetland, 1107 Technology Parkway, Cedar Falls, Iowa 50613-6951, (319)-266-0161

UNITED STATES PUBLIC LAND SURVEY CORNER CERTIFICATE OF

LAND SURVEY MONUMENTS SITUATED IN SECTION NO. 14, TOWNSHIP NO. 89 NORTH, RANGE
NO. 12 WEST OF THE FIFTH PRINCIPAL MERIDIAN, BLACK HAWK COUNTY, IOWA.

PREVIOUSLY RECORDED IN N/A

(SHOW REASON FOR PREPARING THIS CERTIFICATE, THE EVIDENCE AND DETAILED PROCEDURES USED IN ESTABLISHING THE CORNER POSITIONS AND MONUMENTATION FOUND OR PLACED.)

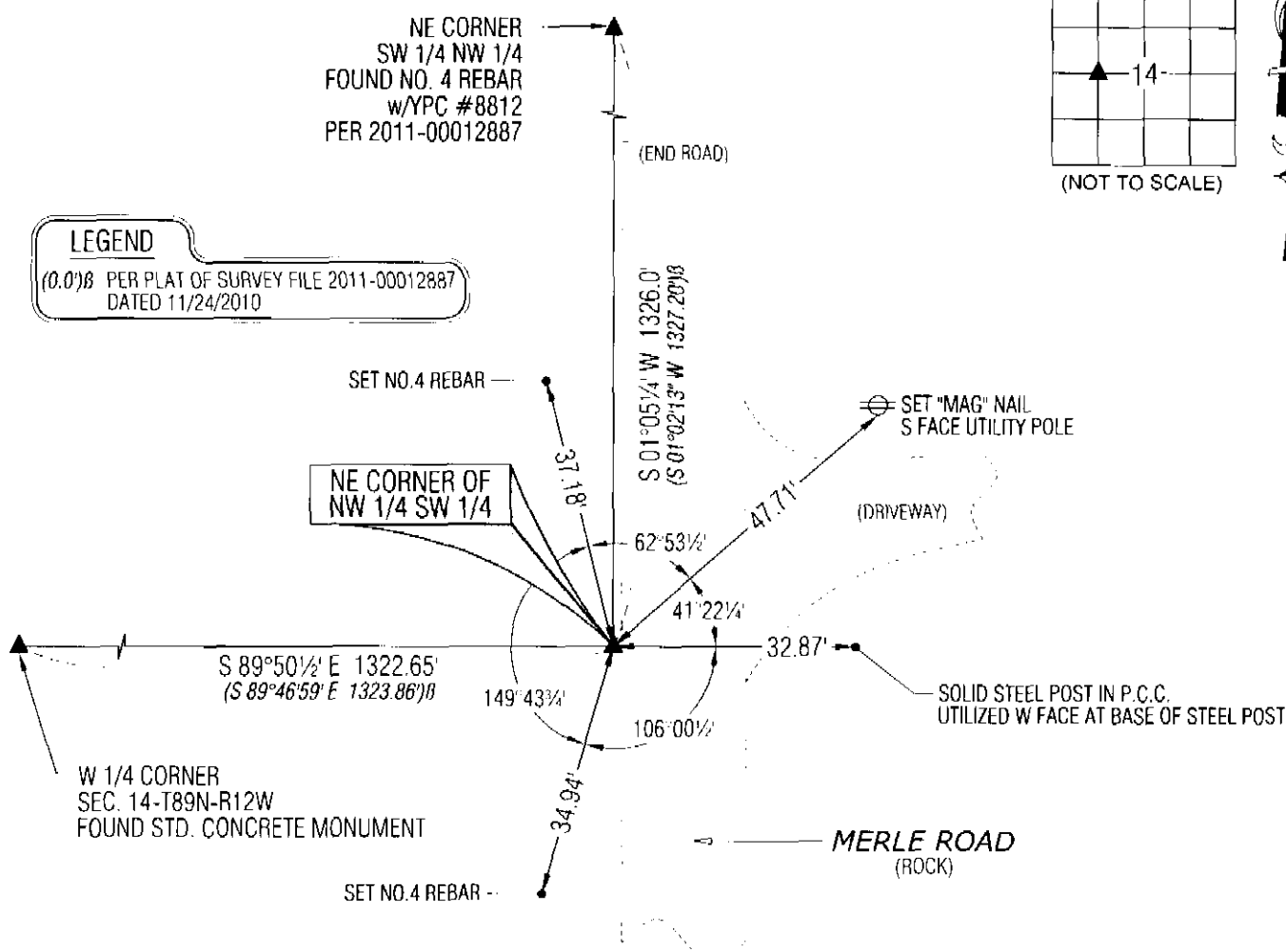
MONUMENT DESCRIPTION AND REMARKS:

NO USPLSCC ON FILE. SURVEY COMPLETED IN THE SE 1/4 OF SEC. 15-T89N-R12W & IN THE NW 1/4 OF SEC. 14-T89N-R12W.

--- **NE CORNER NW 1/4 SW 1/4:** NO BLACK HAWK COUNTY ENGINEER TIES AVAILABLE. PLAT OF SURVEY FILE 2011-00012887 DATED 11/24/2010 CALLS FOR *[CORNER TO BE AT MIDPOINT BETWEEN W 1/4 AND CENTER OF SECTION BUT SHOWS NOTHING FOUND OR SET]*. SEARCHED AT EXTENSION OF FENCELINE WITH STEEL POST IN P.C.C. AND WOOD LATH w/RIBBON IN BARBED WIRE, FOUND LIMESTONE (0.5' N-S & 0.5' E-W) WITH 1" OPEN PIPE 0.2 WEST AND 0.2 SOUTH FOR MAGNETIC DETECTION. UTILIZED CENTERLINE POINT ON SAID STONE. STONE IS 1.2' ± WEST OF WEST EDGE OF GRAVEL ROAD.

PLAN VIEW

(SHOW A MINIMUM OF THREE REFERENCE TIES TO DURABLE PHYSICAL OBJECTS, RELEVANT MONUMENTS AND PHYSICAL CONDITIONS THAT WILL ENABLE RECOVERY OF THE CORNER)

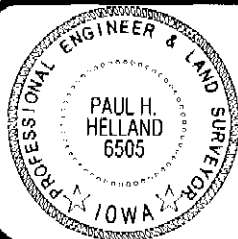


(BEARINGS ARE ASSUMED)



HELLAND ENGINEERING & SURVEYING, LTD.
1107 Technology Parkway
Cedar Falls, Iowa 50613-6951
(319)-266-0161

SHINER - 8D NAIL & 1 5/16"Ø METAL SHINER
BRASS TAG = 8D NAIL & 13/16"Ø BRASS TAG
OPC = PLASTIC CAP (O=ORANGE, R=RED, Y=YELLOW)
(00) RECORDED AS FILE NAME: 12-172C1.DWG



I hereby certify that this land surveying document was prepared and the related survey work was performed by me or under my direct personal supervision and that I am a duly licensed Land Surveyor under the laws of the State of Iowa.

Surveyor under the laws of the State of Iowa.
Paul H. Helland 7/14/12
 Paul H. Helland
 License Number 6505
 My license renewal date is December 31, 2013.
 All pages or sheets are covered by this seal except:

LIST CORNERS TO BE INDEXED

CORNER	SECTION	TOWNSHIP	RANGE
NE COR. NW ¼ SW ¼	14	89N	12W
SE COR. SW ¼ NW ¼	14	89N	12W
SW COR. SE ¼ NW ¼	14	89N	12W
NW COR. NE ¼ SW ¼	14	89N	12W

File Number: 2013-00001963 Seq: 1