



Doc ID: 010194080001 Type: GEN
Recorded: 06/25/2021 at 10:20:32 AM
Fee Amt: \$7.00 Page 1 of 1
Black Hawk County Iowa
SANDIE L. SMITH RECORDER

File **2021-00027394**

Reserved for County Recorder's use.

Kyle J. Helland, 6109 Chancellor Drive, Cedar Falls, Iowa 50613-6916, (319)-266-0161

UNITED STATES PUBLIC LAND SURVEY CORNER CERTIFICATE OF

LAND SURVEY MONUMENTS SITUATED IN SECTION NO. 14, TOWNSHIP NO. 89 NORTH, RANGE
NO. 12 WEST OF THE FIFTH PRINCIPAL MERIDIAN, BLACK HAWK COUNTY, IOWA.
PREVIOUSLY RECORDED IN N/A

(SHOW REASON FOR PREPARING THIS CERTIFICATE, THE EVIDENCE AND DETAILED PROCEDURES USED IN ESTABLISHING THE
CORNER POSITIONS AND MONUMENTATION FOUND OR PLACED.)

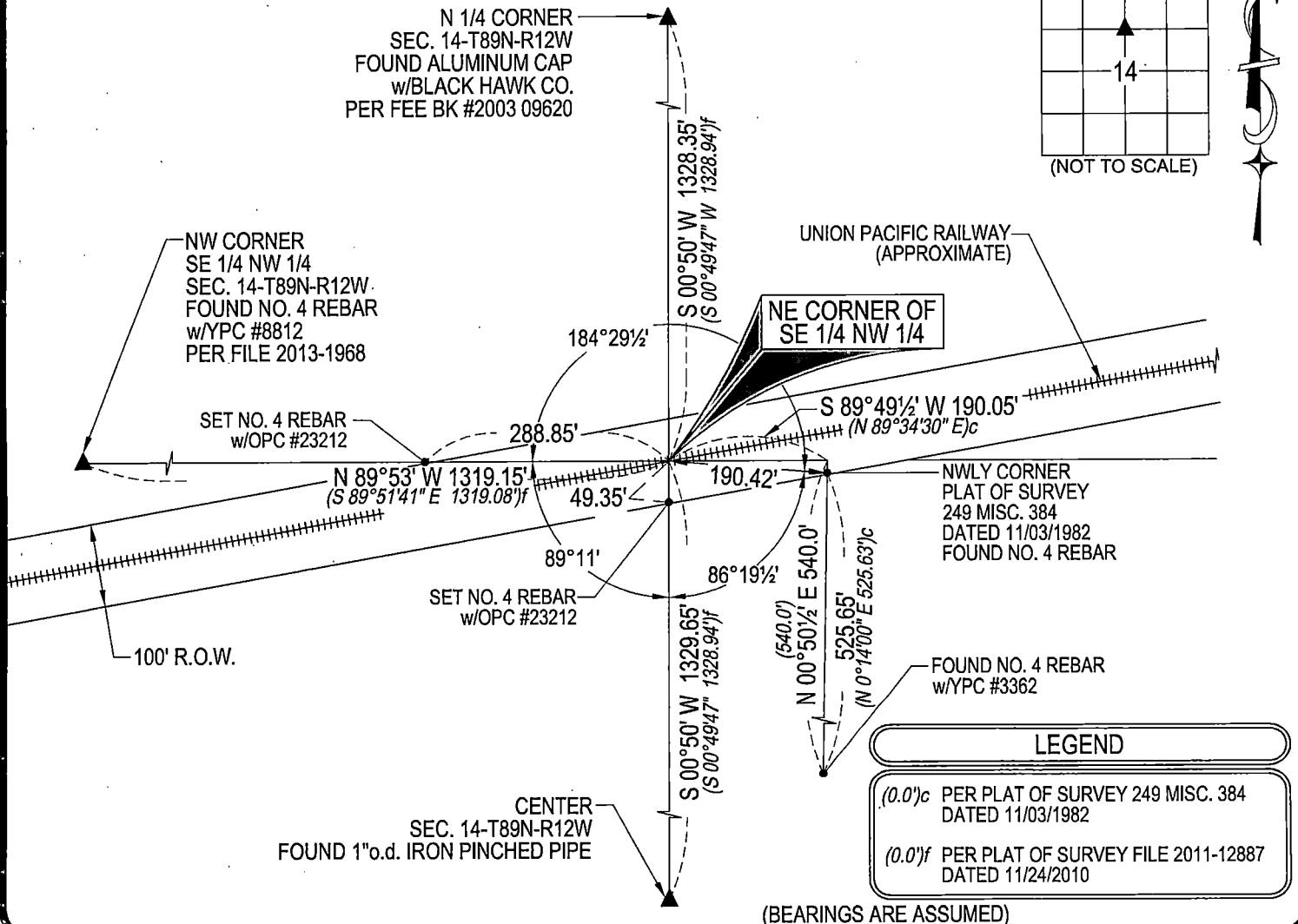
MONUMENT DESCRIPTION AND REMARKS:

NO USPLSCC ON FILE. SURVEY COMPLETED IN THE SE 1/4 NW 1/4 OF SEC. 14-T89N-R12W.

→ **NE CORNER SE 1/4 NW 1/4:** NO BLACK HAWK COUNTY ENGINEER TIES AVAILABLE. PLAT OF SURVEY BOOK 249 PAGE 384 DATED 11/03/1982 CALLS FOR [SPK. IN R.R. TIE]. PLAT OF SURVEY FEE BOOK 2005-01676 DATED 07/16/2004 UTILIZES CORNER BUT DOES NOT INDICATE WHAT WAS FOUND OR SET. AREA FALLS ON OCCUPIED UNION PACIFIC RAILWAY. **DID NOT HAVE ACCESS TO RAILWAY PROPERTY, THEREFORE NOTHING FOUND OR SET.** UTILIZED CALCULATED POSITION PER PLAT OF SURVEY BOOK 249 PAGE 384.

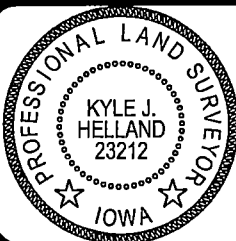
PLAN VIEW

(SHOW A MINIMUM OF THREE REFERENCE TIES TO DURABLE PHYSICAL OBJECTS, RELEVANT MONUMENTS AND PHYSICAL
CONDITIONS THAT WILL ENABLE RECOVERY OF THE CORNER.)



HELLAND ENGINEERING & SURVEYING, LTD.
6109 Chancellor Drive
Cedar Falls, Iowa 50613-6916
(319)-266-0161

BRASS TAG = 4d. NAIL & 13/16" Ø BRASS TAG DRAWN BY: KDA
SHINER = 1" Ø STEEL SHINER w/MASONRY NAIL
OPC = PLASTIC CAP (O=ORANGE, R=RED, Y=YELLOW)
(00') RECORDED AS FILE NAME: 21-157-62.DWG



I hereby certify that this land surveying document was prepared
and the related survey work was performed by me or under my
direct personal supervision and that I am a duly licensed
Professional Land Surveyor under the laws of the State of Iowa.

Kyle J. Helland
Kyle J. Helland
License Number 23212
My license renewal date is December 31, 2021.
All pages or sheets are covered by this seal except:

LIST CORNERS TO BE INDEXED

CORNER	SECTION	TOWNSHIP	RANGE
NE COR. SE 1/4 NW 1/4	14	89N	12W
SE COR. NE 1/4 NW 1/4	14	89N	12W
SW COR. NW 1/4 NE 1/4	14	89N	12W
NW COR. SE 1/4 NE 1/4	14	89N	12W