

PROOF FILED FOR RECORD OCT 29, 2002, AT 10:00 A.M. FEE 1-5.00/-.

COMPARED

BLACK HAWK COUNTY RECORDER

HELLAND ENGINEERING & SURVEYING LTD

Paul H. Helland, 1107 Technology Parkway, Cedar Falls, Iowa 50613-6951, (319)-266-0161

UNITED STATES PUBLIC LAND SURVEY CORNER CERTIFICATE
OF

LAND SURVEY MONUMENTS SITUATED IN SECTION NO. 13, TOWNSHIP NO. 89 NORTH, RANGE NO. 12 WEST OF THE FIFTH PRINCIPAL MERIDIAN, BLACK HAWK COUNTY, IOWA.

PREVIOUSLY RECORDED IN BOOK _____, PAGE _____.

(SHOW REASON FOR PREPARING THIS CERTIFICATE, THE EVIDENCE AND DETAILED PROCEDURES USED IN ESTABLISHING THE CORNER POSITIONS AND MONUMENTATION FOUND OR PLACED.)

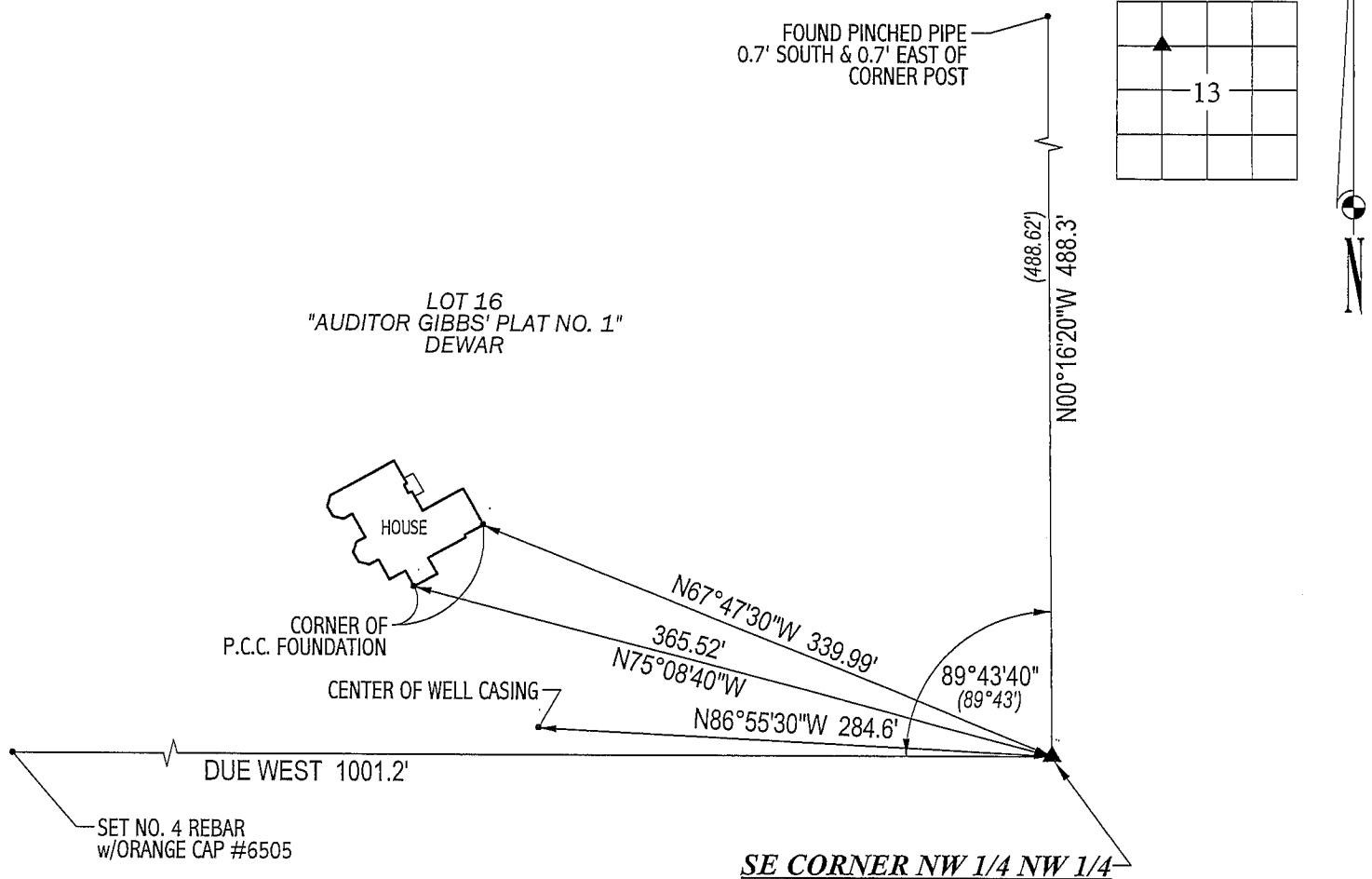
MONUMENT DESCRIPTION AND REMARKS:

NO CORNER CERTIFICATE ON FILE. SURVEY DONE IN NW 1/4 NW 1/4 OF SEC. 13-T89N-R12W.

SE CORNER OF NW 1/4 NW 1/4: NO COUNTY ENGINEER REFERENCE TIES. FOUND 1" PINCHED PIPE SET BY WAYNE CLAASSEN IN 1971 FOR AUDITOR GIBBS' PLAT NO. 1 IN DEWAR. NO FENCES EAST & SOUTH. FENCES WEST & NORTH RECENTLY REMOVED.

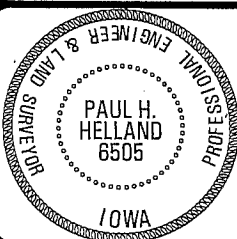
PLAN VIEW

(SHOW A MINIMUM OF THREE REFERENCE TIES TO DURABLE PHYSICAL OBJECTS, RELEVANT MONUMENTS AND PHYSICAL CONDITIONS THAT WILL ENABLE RECOVERY OF THE CORNER.)



HELLAND ENGINEERING & SURVEYING, LTD.
1107 Technology Parkway
Cedar Falls, Iowa 50613-6951
(319)-266-0161

FILE NAME: 02-293CC.DRG



I hereby certify that this land surveying document was prepared and the related survey work was performed by me or under my direct personal supervision and that I am a duly licensed Land Surveyor under the laws of the State of Iowa.

Surveyor under the laws of the State of Iowa.
Paul H. Helland
 Paul H. Helland
 License Number 6505
 My license renewal date is December 31, 2003.
 All pages or sheets are covered by this seal except:

LIST CORNERS TO BE INDEXED

<u>CORNER</u>	<u>SECTION</u>	<u>TOWNSHIP</u>	<u>RANGE</u>
SE CORNER NW 1/4 NW 1/4	13	89N	12W

[Signature]