

Reserved for County Recorder's use.

Doc ID: 009362620001 Type: GEN
Recorded: 08/21/2018 at 01:19:35 PM
Fee Amt: \$7.00 Page 1 of 1
Black Hawk County Iowa
SANDIE L. SMITH RECORDER
File **2019-00002971**

Kyle J. Helland, 1107 Technology Parkway, Cedar Falls, Iowa 50613-6951, (319)-266-0161

UNITED STATES PUBLIC LAND SURVEY CORNER CERTIFICATE
OF

LAND SURVEY MONUMENTS SITUATED IN SECTION NO. 13, TOWNSHIP NO. 89 NORTH, RANGE
NO. 12 WEST OF THE FIFTH PRINCIPAL MERIDIAN, BLACK HAWK COUNTY, IOWA.
PREVIOUSLY RECORDED IN N/A

(SHOW REASON FOR PREPARING THIS CERTIFICATE, THE EVIDENCE AND DETAILED PROCEDURES USED IN ESTABLISHING THE
CORNER POSITIONS AND MONUMENTATION FOUND OR PLACED.)

MONUMENT DESCRIPTION AND REMARKS:

NO USPLSCC ON FILE. SURVEY COMPLETED IN THE NW FRL 1/4 OF SEC. 18-T89N-R11W.

→ **E 1/4 CORNER:** NO BLACK HAWK COUNTY ENGINEER REFERENCE TIES AVAILABLE. JOHN BALL SURVEY
DATED 07/13/1866 CALLS FOR [MOUND & STONE]. WPA NOTES DATED 06/24/1938 CALLS FOR [FOUND LARGE
GRANITE BOULDER 2' X 3' X 1 1/4' STONE CORNER POST AND LARGE 3 1/2 FT COTTON WOOD TREE. BOULDER
TOO LARGE TO LOWER DUE TO TREE. ROLLED BOULDER ASIDE PUT C.M. ON POINT FLUSH WITH GROUND,
AND LAID BOULDER BESIDE SAME.]. SEARCHED AREA FOUND STANDARD CONCRETE MONUMENT 0.4' DEEP
@ SW CORNER OF STEEL CORNER POST (PORTION OF A CAR FRAME).

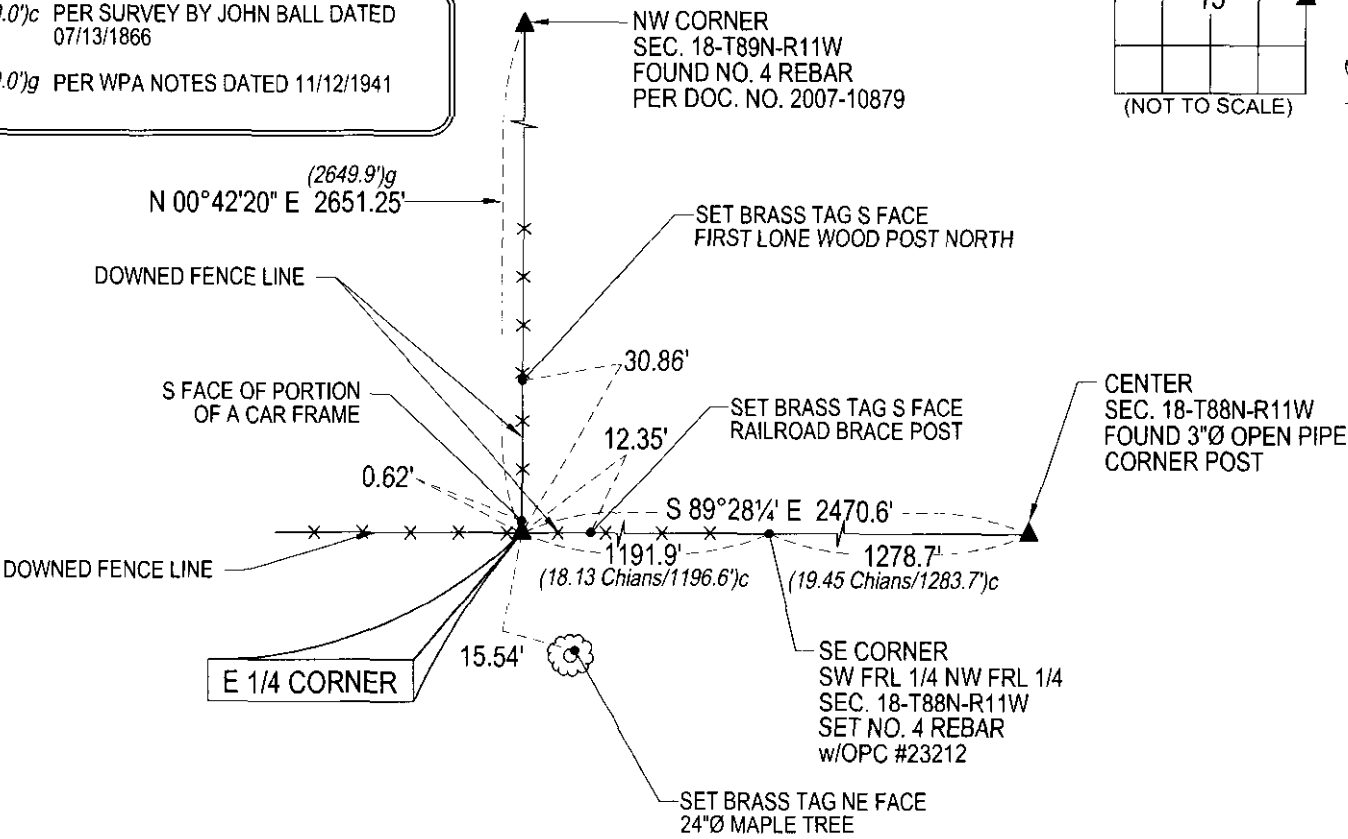
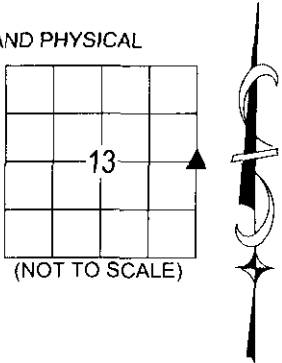
PLAN VIEW

(SHOW A MINIMUM OF THREE REFERENCE TIES TO DURABLE PHYSICAL OBJECTS, RELEVANT MONUMENTS AND PHYSICAL
CONDITIONS THAT WILL ENABLE RECOVERY OF THE CORNER.)

LEGEND

(0.0')c PER SURVEY BY JOHN BALL DATED
07/13/1866

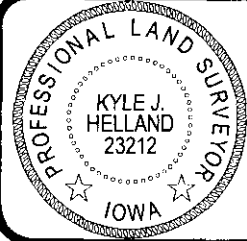
(0.0')g PER WPA NOTES DATED 11/12/1941



(BEARINGS ARE ASSUMED)

HES HELLAND ENGINEERING & SURVEYING, LTD.
1107 Technology Parkway
Cedar Falls, Iowa 50613-6951
(319)-266-0161

SHINER = 4d. NAIL & 1 5/16"Ø METAL SHINER DRAWN BY: CDR
BRASS TAG = 4d. NAIL & 13/16"Ø BRASS TAG
OPC = PLASTIC CAP (O=ORANGE, R=RED, Y=YELLOW)
(00') RECORDED AS FILE NAME: 18-191-26.DWG



I hereby certify that this land surveying document was prepared
and the related survey work was performed by me or under my
direct personal supervision and that I am a duly licensed
Professional Land Surveyor under the laws of the State of Iowa.
Kyle J. Helland 8/13/2019
Kyle J. Helland
License Number 23212
My license renewal date is December 31, 2019.
All pages or sheets are covered by this seal except:

LIST CORNERS TO BE INDEXED			
CORNER	SECTION	TOWNSHIP	RANGE
E 1/4 CORNER	13	89N	12W
W 1/4 CORNER	18	89N	11W

File Number: 2019-00002971 Seq: 1