

2025-16473

RECORDED: 11/10/2025 09:39:57 AM

RECORDING FEE: \$7.00

REVENUE TAX: \$

COMBINED FEE: \$7.00

SANDIE L. SMITH, RECORDER

BLACK HAWK COUNTY, IOWA

Reserved for County Recorder's use.

Jeffrey P. Helland, 6109 Chancellor Drive, Cedar Falls, Iowa 50613-6916, (319)-266-0161

UNITED STATES PUBLIC LAND SURVEY CORNER CERTIFICATE OF

LAND SURVEY MONUMENTS SITUATED IN SECTION NO. 12, TOWNSHIP NO. 89 NORTH, RANGE NO. 12 WEST OF THE FIFTH PRINCIPAL MERIDIAN, BLACK HAWK COUNTY, IOWA. PREVIOUSLY RECORDED IN #2008008846.

(SHOW REASON FOR PREPARING THIS CERTIFICATE, THE EVIDENCE AND DETAILED PROCEDURES USED IN ESTABLISHING THE CORNER POSITIONS AND MONUMENTATION FOUND OR PLACED.)

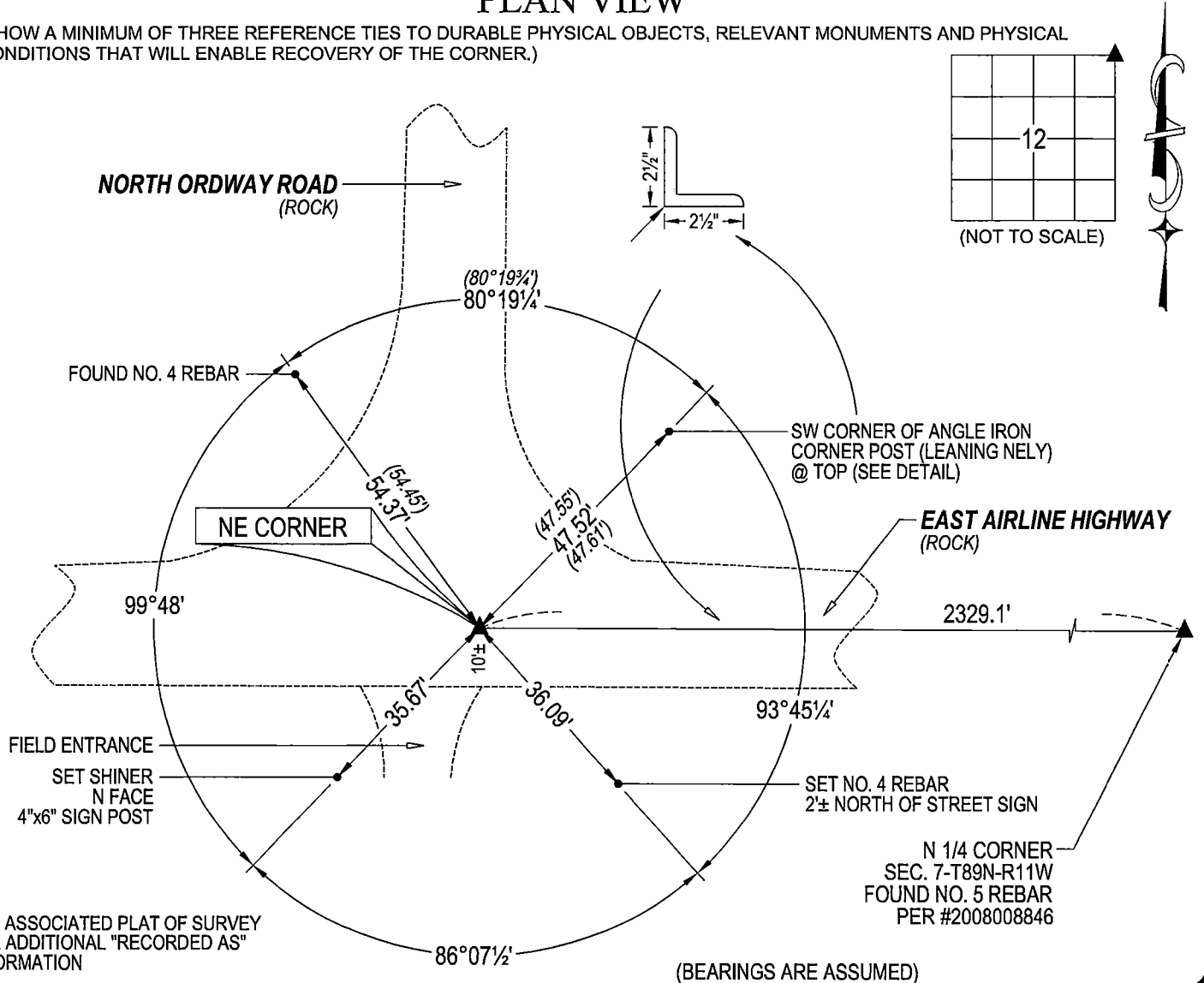
MONUMENT DESCRIPTION AND REMARKS:

NO LONGER THREE VALID REFERENCE TIES. SURVEY COMPLETED IN THE NW FRL OF SEC. 7-T89N-R11W.

→ **NE CORNER:** USPLSCC RECORDED IN #2008008846 DATED 09/25/2007 CALLS FOR [W.P.A. CHANGING NOTES DATED 5/19/39 CALLS FOR [FOUND IRON BAR 1/2" X 27" LONG. SET C.M. 12" DEEP. PLAT OF SURVEY 178 MISC. 283 (NO DATE) CALLS FOR [FOUND MONUMENT]. USPLSCC 319 MISC. 881 DATED 3/11/95 CALLS FOR [FOUND NAIL 0.4' DEEP]. FOUND 60d. SPIKE 0.2' DEEP. TIED OUT, REMOVED, AND FOUND NO. 6 REBAR 0.4' DEEP. TIED OUT, REMOVED NO. 6 REBAR AND FOUND A STD. CONCRETE MONUMENT 1.5' DEEP. SAID NO. 6 WAS POSITIONED OVER STD. CONCRETE MONUMENT. RESET SAID NO. 6 REBAR (1' LONG) DIRECTLY ON TOP OF STD. CONCRETE MONUMENT. FOUND NO. 6 REBAR (0.5'± DEEP) AND UTILIZED AS THE CORNER.

PLAN VIEW

(SHOW A MINIMUM OF THREE REFERENCE TIES TO DURABLE PHYSICAL OBJECTS, RELEVANT MONUMENTS AND PHYSICAL CONDITIONS THAT WILL ENABLE RECOVERY OF THE CORNER.)



SEE ASSOCIATED PLAT OF SURVEY FOR ADDITIONAL "RECORDED AS" INFORMATION

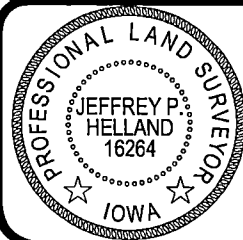
(BEARINGS ARE ASSUMED)



HELLAND ENGINEERING & SURVEYING, LTD.

6109 Chancellor Drive
Cedar Falls, Iowa 50613-6916
(319)-266-0161

SHINER = 4d. NAIL & 1 5/16"Ø METAL SHINER DRAWN BY: JPH
BRASS TAG = 4d. NAIL & 13/16"Ø BRASS TAG
OPC = PLASTIC CAP (O=ORANGE, R=RED, Y=YELLOW)
(00) RECORDED AS FILE NAME: 25-217-27.DWG



I hereby certify that this land surveying document was prepared and the related survey work was performed by me or under my direct personal supervision and that I am a duly licensed Professional Land Surveyor under the laws of the State of Iowa.
Jeffrey P. Helland
Jeffrey P. Helland
License Number 16264
My license renewal date is December 31, 2025.
All pages or sheets are covered by this seal except:

LIST CORNERS TO BE INDEXED

CORNER	SECTION	TOWNSHIP	RANGE
NE CORNER	12	89N	12W
SE CORNER	1	89N	12W
SW CORNER	6	89N	11W
NW CORNER	7	89N	11W