

UNITED STATES PUBLIC LAND SURVEY CORNER CERTIFICATE

OF

Land Survey Monuments situated in Section 11, Township 89, Range 12, of the Fifth Principal Meridian, BLACK HAWK County, Iowa.
 Previously recorded in (not applicable) in County Recorder's Office.
 (book, page, document number, etc.)

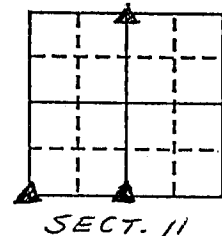
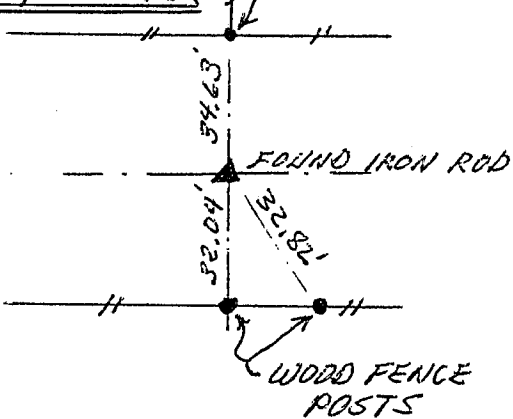
(Show reason for preparing this certificate, the evidence and detailed procedures used in establishing the corner positions and monumentation found or placed.)

Monument Description and Remarks: NO CERTIFICATES ON FILE, & TO
UPDATE TIES.

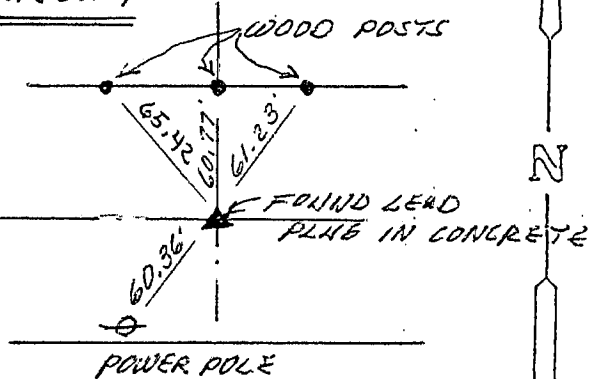
PLAN - VIEW

(Show a minimum of three reference ties to durable physical objects, relevant monuments and physical conditions that will enable recovery of the corner.)

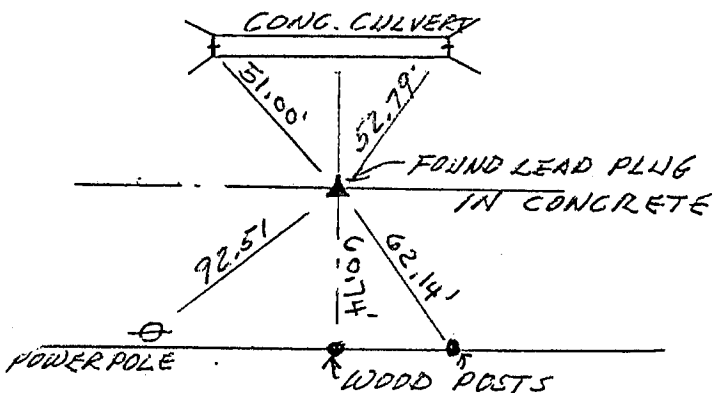
N¹/₄ CORNER STEEL FENCE POST



SE CORNER SW¹/₄



SW COR SW¹/₄



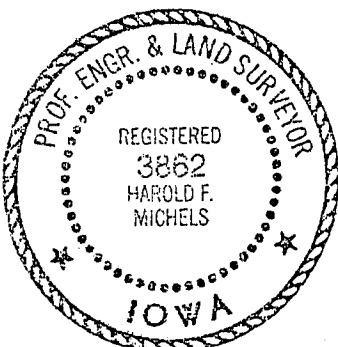
I hereby certify that the survey work was completed and this certificate was prepared by me or under my direct personal supervision and that I am a duly registered land surveyor under the laws of the state of Iowa.

Signature: Harold F. Michels

Name typed or printed: Harold F. Michels

Date: APR. 12, 1991 Reg. No. 3862

SEAL



Corners	List Corners to be Indexed		
	Section	Twp	Range
N ¹ / ₄ COR.	11	89	12
SE COR. SW ¹ / ₄	"	"	"
SW COR. SW ¹ / ₄	"	"	"