

PREPARED BY: BLACK HAWK COUNTY ENGINEERS OFFICE  
316 E. FIFTH STREET, ROOM 211 WATERLOO, IOWA 50703

PH.# (319) 833-3008  
FAX.# (319) 833-3139

SLSI 9-94  
CERT 12-96

UNITED STATES PUBLIC LAND SURVEY CORNER CERTIFICATE OF  
Land Survey Monuments situated in Section 11 , Township 89 ,  
Range 12 , of the Fifth Principal Meridian, BLACK HAWK County, Iowa.  
Previously recorded in Misc. Book 331 , Page 231 , in County Recorder's Office.

(Show reason for preparing this certificate, the evidence and detailed procedures used in establishing the corner positions and monumentation found or placed.)

Monument Description and Remarks: FND. #5 RBR. PRIOR TO RESURF. PROJECT,  
AND TIED AS SHOWN. RECORD TIES PER PLS #3862 DESTROYED OR UNSPECIFIED IN  
DETAIL. CORNER ACCEPTED PER BH CO. GEOM. DEFL. (PER RTK GPS, JUNE 2000 AND  
HIST. SECTION LINE REFERENCES OF RECORD), INCL. VERIF. AS RESET, JUNE 2006.  
PLAN 4 1/2"-5" HMA RESURF. PROPOSED.  
CORNER RE-SET WITH 5IN. L. #5 REBAR LOCATED 0.30' EAST OF C.L. ACC JOINT.

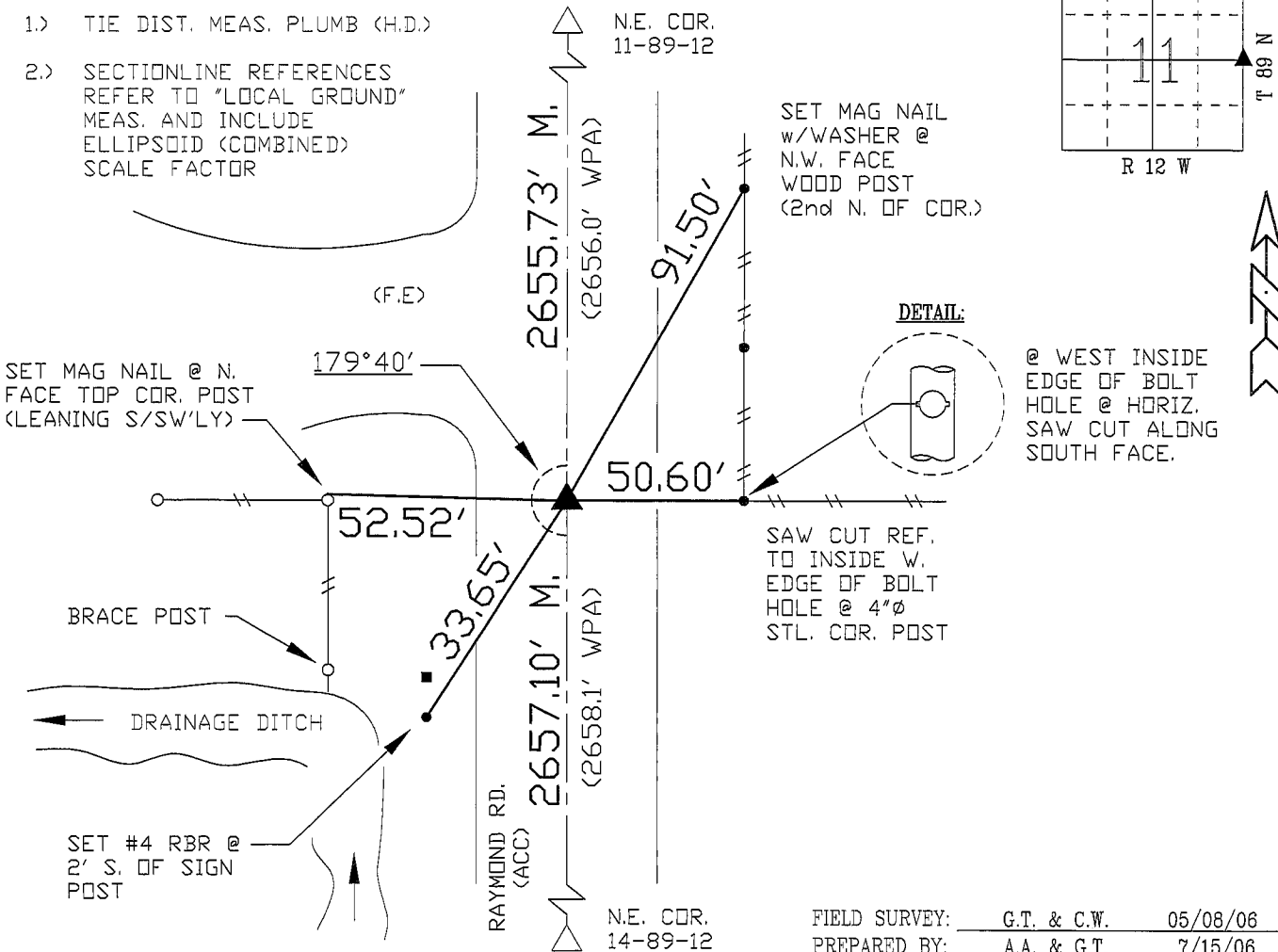
PLAN - VIEW

(Show a minimum of three reference ties to durable physical objects, relevant monuments and physical conditions that will enable recovery of the corner.)

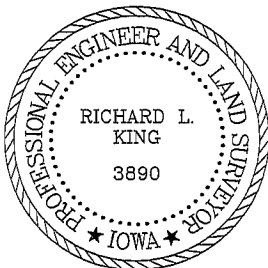
NOTES:

- 1.) TIE DIST. MEAS. PLUMB (H.D.)
- 2.) SECTIONLINE REFERENCES  
REFER TO "LOCAL GROUND"  
MEAS. AND INCLUDE  
ELLIPSOID (COMBINED)  
SCALE FACTOR

NOT TO SCALE



CERTIFICATION



I hereby certify that this land surveying document was prepared and the related survey work was performed by me or under my direct personal supervision and that I am a duly licensed Land Surveyor under the laws of the State of Iowa.

*Richard L. King* 7/17/06 (date)  
Richard L. King  
License Number 3890  
My license renewal date is December 31, 2007  
Pages or sheets covered by this seal:  
This Land Corner Certificate Only.

LIST CORNERS TO BE INDEXED

Corner	Section	Township	Range
E. 1/4.	11	89	12
W. 1/4.	12	89	12