



Doc ID: 004106090001 Type: GEN
Kind: CORNER
Recorded: 04/08/2010 at 03:35:19 PM
Fee Amt: \$9.00 Page 1 of 1
Black Hawk County Iowa
JUDITH A MCCARTHY RECORDER
File **2010-00018766**

UNITED STATES PUBLIC LAND SURVEY CORNER CERTIFICATE
OF

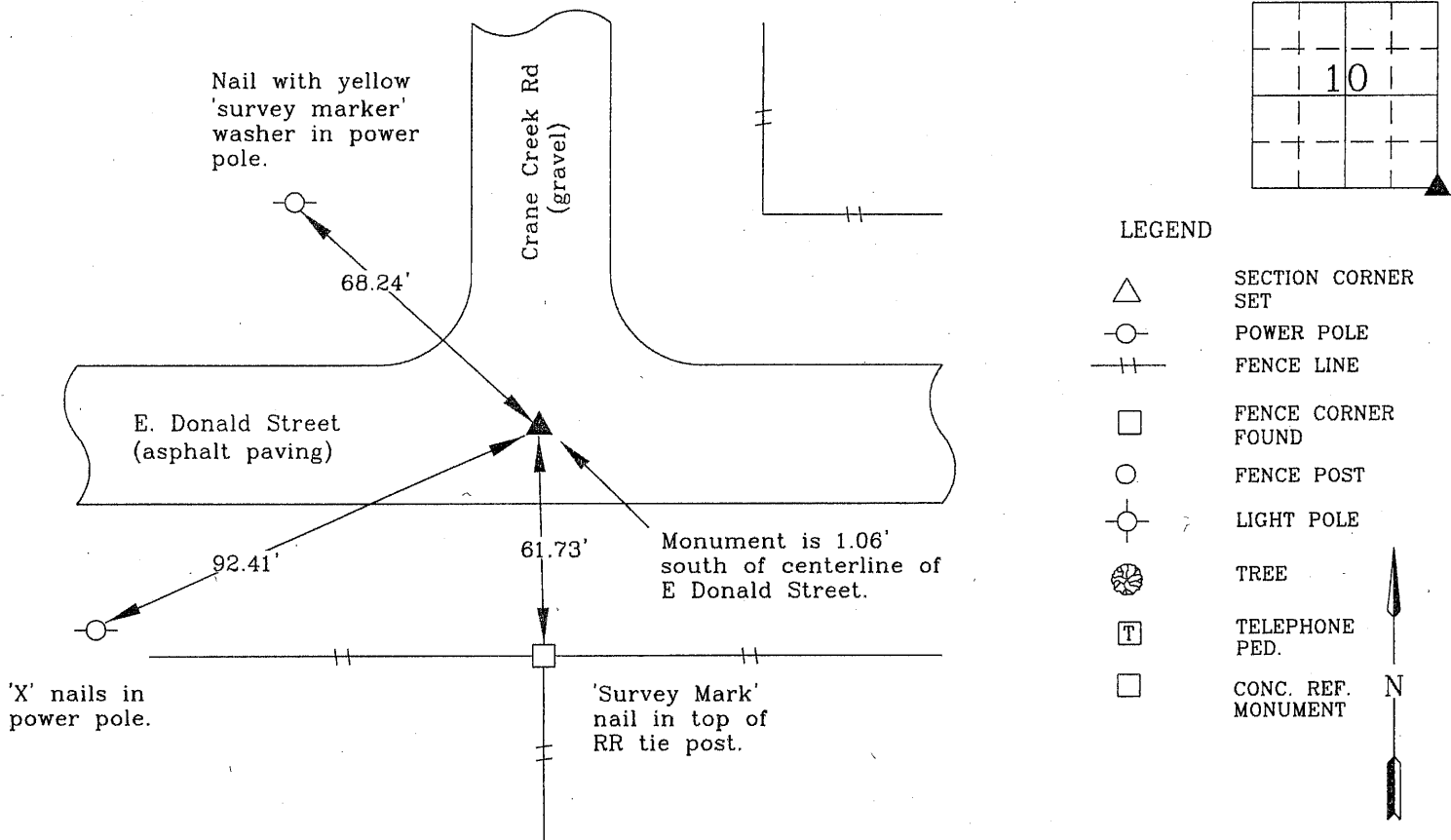
Land Survey Monuments situated in Section 10, Township 89 N, Range 12, of the Fifth Principal Meridian, Black Hawk County, Iowa
Previously recorded in Book N/A, Page .

Show reason for preparing this certificate, the evidence and detailed procedures used in establishing the corner positions and monumentation found or placed.)

Monument Description and Remarks: South Quarter Corner 10-89-12.
Found Aluminum Disk stamped 'Black Hawk County Land Corner' from County Engineer ties.
Corner was reset by County Engineer as part of an overlay project.
Corner Certificate was prepared because of change in monumentation as noted in Corner Certificate
recorded at 295 Misc 566

PLAN - VIEW

(Show a minimum of three reference ties to durable physical objects, relevant monuments and physical conditions recovery of the corner.)



I hereby certify that this land surveying document was prepared and the related survey work was performed by me or under my direct personal supervision and that I am a duly licensed Land Surveyor under the laws of the State of Iowa.



Wendell J. Lupkes 3-16-10
WENDELL J. LUPKES, L.S. DATE
License number 12088
My license renewal date is December 31, 2010
Pages or sheets covered by this seal: 1

List Corner to be Indexed

Corner	Section	Twp	Range
SE Cor	10	89 N	12 W



VJ Engineering
1501 Technology Parkway
Cedar Falls, Iowa - 319-266-5829

SECTION CORNER
REFERENCE TIES

scale
NONE
drawn by
BJM
date
2-24-10