



Doc ID: 004078120001 Type: GEN
Kind: CORNER
Recorded: 03/09/2010 at 01:48:59 PM
Fee Amt: \$9.00 Page 1 of 1
Black Hawk County Iowa
JUDITH A MCCARTHY RECORDER
File **2010-00016689**

UNITED STATES PUBLIC LAND SURVEY CORNER CERTIFICATE OF

Land Survey Monuments situated in Section 10, Township 89 N, Range 12 W, of the Fifth Principal Meridian, Black Hawk County, Iowa
Previously recorded in Book N/A, Page .

Show reason for preparing this certificate, the evidence and detailed procedures used in establishing the corner positions and monumentation found or placed.)

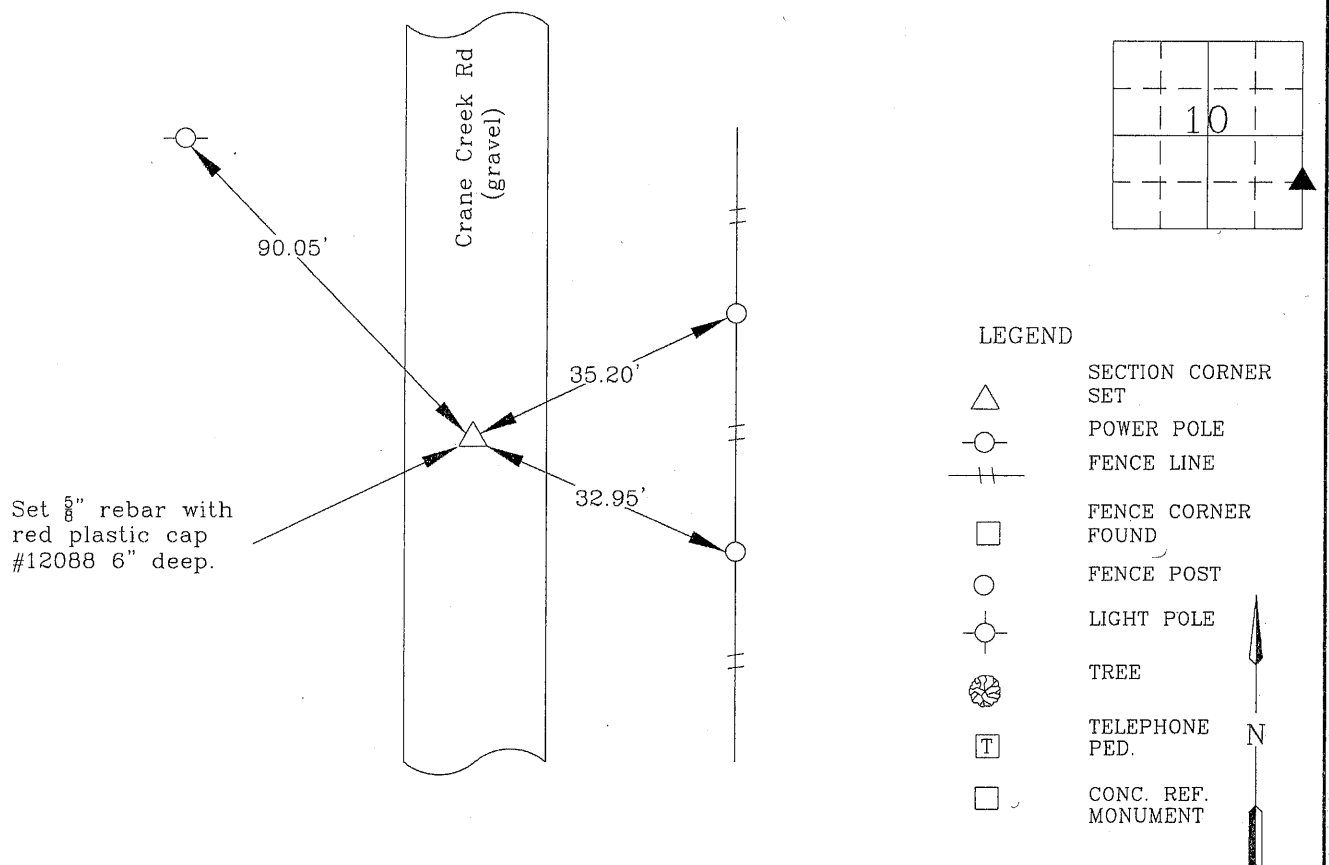
Monument Description and Remarks: NE Cor. of the SE. Qtr. of the SE Qtr.

Set 3/8" rebar with red plastic cap #12088 at the midpoint of the line between the Southeast Corner and the East Quarter Corner.

No Corner Certificate Previously Recorded

PLAN - VIEW

(Show a minimum of three reference ties to durable physical objects, relevant monuments and physical conditions recovery of the corner.)



I hereby certify that this land surveying document was prepared and the related survey work was performed by me or under my direct personal supervision and that I am a duly licensed Land Surveyor under the laws of the State of Iowa.



Wendell J. Lupkes 3-9-10
WENDELL J. LUPKES, L.S. DATE

License number 12088

My license renewal date is December 31, 2010

Pages or sheets covered by this seal: 1

List Corner to be Indexed

Corner	Section	Twp	Range
NE Corner	10	89 N	12 W
SE Qtr.			
SE Qtr.			



VJ Engineering
1501 Technology Parkway
Cedar Falls, Iowa - 319-266-5829

SECTION CORNER
REFERENCE TIES

Scale
NONE
drawn by
BJM
date
2-23-10