

I
P
Z

Document Number: 2008016784
Date: Feb 29, 2008 4:30:00 pm
Aud Fee: 0.00 Rec Fee: 5.00
Trans Tax: 0.00 Rec Management Fee: 1.00
E-Com Fee: 1.00 Non-Standard Page Fee: 0.00
Filed for record in Black Hawk County, Iowa
Judith A. McCarthy, County Recorder

Jeffrey P. Helland, 1107 Technology Parkway, Cedar Falls, Iowa 50613-6951, (319)-266-0161

UNITED STATES PUBLIC LAND SURVEY CORNER CERTIFICATE
OF

LAND SURVEY MONUMENTS SITUATED IN SECTION NO. 10, TOWNSHIP NO. 89 NORTH, RANGE
NO. 12 WEST OF THE FIFTH PRINCIPAL MERIDIAN, BLACK HAWK COUNTY, IOWA.
PREVIOUSLY RECORDED IN N/A

(SHOW REASON FOR PREPARING THIS CERTIFICATE, THE EVIDENCE AND DETAILED PROCEDURES USED IN ESTABLISHING THE
CORNER POSITIONS AND MONUMENTATION FOUND OR PLACED.)

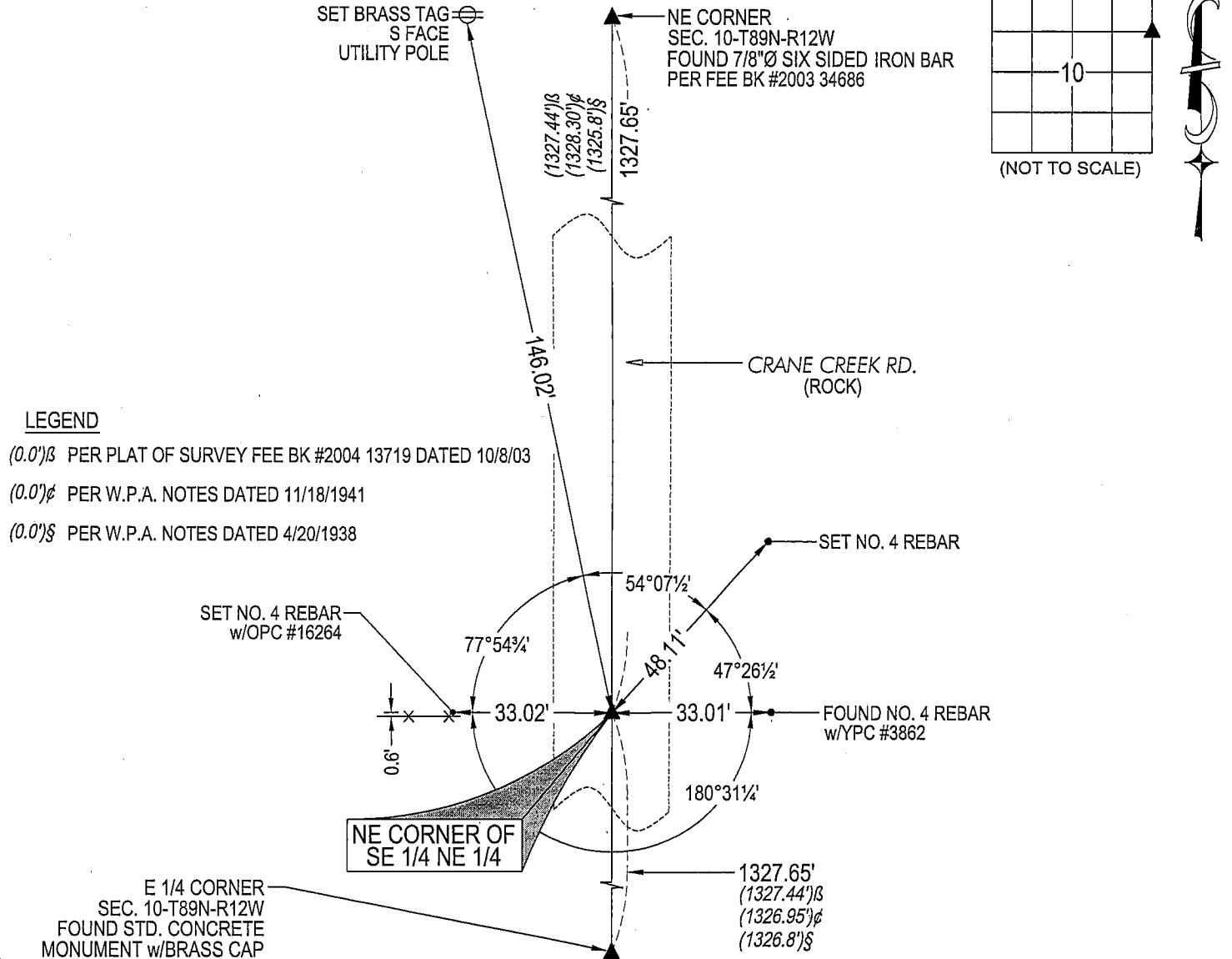
MONUMENT DESCRIPTION AND REMARKS:

NO USPLSCC ON FILE. SURVEY COMPLETED IN THE SE 1/4 OF SEC. 9-T83N-R11W.

→ NE CORNER OF SE 1/4 NE 1/4: NO BLACK HAWK COUNTY ENGINEER REFERENCE TIES AVAILABLE. PLAT OF
SURVEY IN SEC. 11-T89N-R12W BY HAROLD F. MICHELS DATED 10/8/2003 RECORDED IN FEE BOOK #2004 13719
INDICATES CORNER WAS ESTABLISHED AT THE MIDPOINT OF A STRAIGHT LINE BETWEEN THE NE CORNER
AND E 1/4 CORNER, NOTHING WAS SET. SET "COTTON GIN SPIKE" IN ROCK ROAD AT THE THE MIDPOINT OF A
STRAIGHT LINE BETWEEN THE NE CORNER AND E 1/4 CORNER.

PLAN VIEW

(SHOW A MINIMUM OF THREE REFERENCE TIES TO DURABLE PHYSICAL OBJECTS, RELEVANT MONUMENTS AND PHYSICAL
CONDITIONS THAT WILL ENABLE RECOVERY OF THE CORNER.)



LEGEND

- (0.0')B PER PLAT OF SURVEY FEE BK #2004 13719 DATED 10/8/03
- (0.0')P PER W.P.A. NOTES DATED 11/18/1941
- (0.0')S PER W.P.A. NOTES DATED 4/20/1938

HELLAND ENGINEERING & SURVEYING, LTD.
1107 Technology Parkway
Cedar Falls, Iowa 50613-6951
(319)-266-0161

SHINER = 8D NAIL & 1 5/16"Ø METAL SHINER
BRASS TAG = 13/16"Ø BRASS TAG
OPC = PLASTIC CAP (O=ORANGE, R=RED, Y=YELLOW)
(00') RECORDED AS FILE NAME: 08-119C3.DWG

I hereby certify that this land surveying document was prepared
and the related survey work was performed by me or under my
direct personal supervision and that I am a duly licensed Land
Surveyor under the laws of the State of Iowa.
Jeffrey P. Helland 2/13/08
Jeffrey P. Helland
License Number 16264
My license renewal date is December 31, 2009.
All pages or sheets are covered by this seal except:

CORNER	SECTION	TOWNSHIP	RANGE
NE CORNER SE 1/4 NE 1/4	10	89N	12W

Res