

*Patricia A. Liss*

BLACK HAWK COUNTY RECORDER

HELLAND ENGINEERING &amp; SURVEYING, LTD. 1107 TECHNOLOGY PKWY CEDAR FALLS IA 50613-6951

Paul H. Helland, 1107 Technology Parkway, Cedar Falls, Iowa 50613-6951, (319)-266-0161

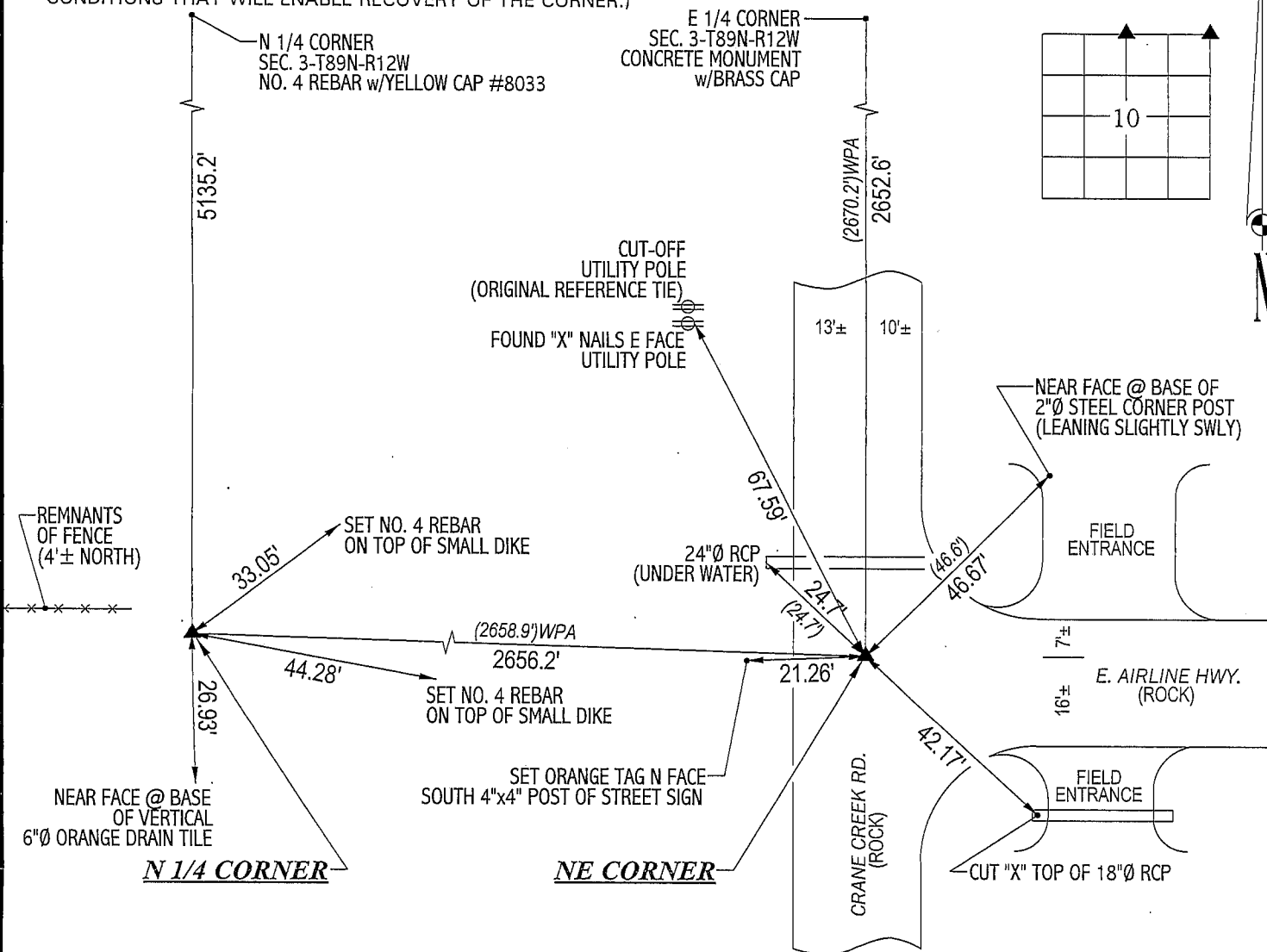
UNITED STATES PUBLIC LAND SURVEY CORNER CERTIFICATE  
OFLAND SURVEY MONUMENTS SITUATED IN SECTION NO. 10, TOWNSHIP NO. 89 NORTH, RANGE  
NO. 12 WEST OF THE FIFTH PRINCIPAL MERIDIAN, BLACK HAWK COUNTY, IOWA.PREVIOUSLY RECORDED IN BOOK 331, PAGE 231. ← N.E. COR. (N.W. cor. 11-89-12) J.T.(SHOW REASON FOR PREPARING THIS CERTIFICATE, THE EVIDENCE AND DETAILED PROCEDURES USED IN ESTABLISHING THE  
CORNER POSITIONS AND MONUMENTATION FOUND OR PLACED.)

## MONUMENT DESCRIPTION AND REMARKS:

NO CORNER CERTIFICATES ON FILE. SURVEY DONE IN S 1/2 SE 1/4 OF SEC. 3-T89N-R12W.

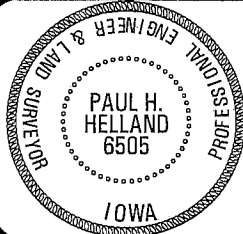
- N 1/4 CORNER: BLACK HAWK COUNTY ENGINEER REFERENCE TIES DATED 4/19/1938 CALLS FOR A CONCRETE MONUMENT, ALL TIES  
OBLITERATED. STARTED EXCAVATION AND FOUND CONCRETE MONUMENT w/BRASS CAP 1.0' DEEP. SET NO. 4 REBAR ON NORTH  
SIDE FOR MAGNETIC DETECTION.
- NE CORNER: BLACK HAWK COUNTY ENGINEER REFERENCE TIES DATED 7/20/1942 CALLS FOR A CONCRETE MONUMENT. THREE OF  
SAID TIES REMAIN (OR EVIDENCE THEREOF). FOUND 7/8"Ø SIX-SIDED IRON BAR 0.2' DEEP CORRESPONDING TO SAID TIES.

## PLAN VIEW

(SHOW A MINIMUM OF THREE REFERENCE TIES TO DURABLE PHYSICAL OBJECTS, RELEVANT MONUMENTS AND PHYSICAL  
CONDITIONS THAT WILL ENABLE RECOVERY OF THE CORNER.)HELLAND ENGINEERING & SURVEYING, LTD.  
1107 Technology Parkway  
Cedar Falls, Iowa 50613-6951  
(319)-266-0161

(00.00') - COUNTY ENGINEER REFERENCE TIE

FILE NAME: 03-171C2.DRG

I hereby certify that this land surveying document was prepared  
and the related survey work was performed by me or under my  
direct personal supervision and that I am a duly licensed Land  
Surveyor under the laws of the State of Iowa.Paul H. Helland  
License Number 6505  
My license renewal date is December 31, 2003.  
All pages or sheets are covered by this seal except:

## LIST CORNERS TO BE INDEXED

| CORNER       | SECTION | TOWNSHIP | RANGE |
|--------------|---------|----------|-------|
| N 1/4 CORNER | 10      | 89N      | 12W   |
| NE CORNER    | 10      | 89N      | 12W   |

*Rae*