

UNITED STATES PUBLIC LAND SURVEY CORNER CERTIFICATE
OF

Land Survey Monuments situated in Section 10, Township 89 N, Range 12 W, of the Fifth Principal Meridian, Black Hawk County, Iowa
Previously recorded in Book N/A, Page .

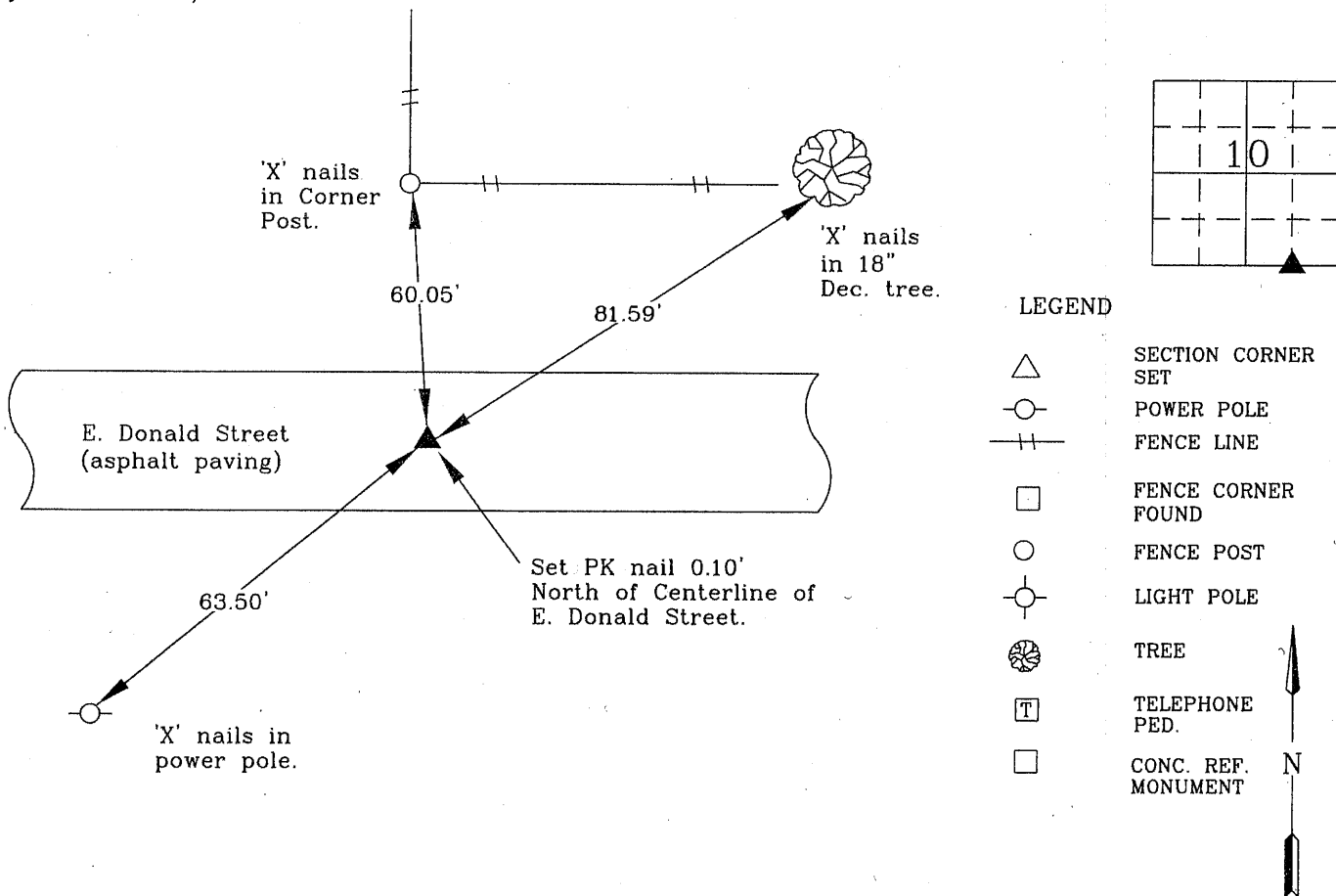
Show reason for preparing this certificate, the evidence and detailed procedures used in establishing the corner positions and monumentation found or placed.)

Monument Description and Remarks: SW Corner of the SE Quarter of the SE Quarter of 10-89-12.
Set PK nail at the midpoint of the line between the South Quarter Corner and Southeast Corner.

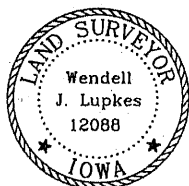
No Corner Certificate Previously Recorded

PLAN - VIEW

(Show a minimum of three reference ties to durable physical objects, relevant monuments and physical conditions recovery of the corner.)



I hereby certify that this land surveying document was prepared and the related survey work was performed by me or under my direct personal supervision and that I am a duly licensed Land Surveyor under the laws of the State of Iowa.



Wendell J. Lupkes 3-9-10
WENDELL J. LUPKES, L.S. DATE
License number 12088
My license renewal date is December 31, 2010
Pages or sheets covered by this seal: 1

List Corner to be Indexed

Corner	Section	Twp	Range
SW Cor.	10	89 N	12 W
SE Qtr.			
SE Qtr.			



VJ Engineering
1501 Technology Parkway
Cedar Falls, Iowa - 319-266-5829

SECTION CORNER
REFERENCE TIES

scale
NONE
drawn by
BJM
date
2-24-10

45.00
19.00