

Document Number: 2008016781
Date: Feb 29, 2008 4:30:00 pm
Aud Fee: 0.00 Rec Fee: 5.00
Trans Tax: 0.00 Rec Management Fee: 1.00
E-Com Fee: 1.00 Non-Standard Page Fee: 0.00
Filed for record in Black Hawk County, Iowa
Judith A. McCarthy, County Recorder

Jeffrey P. Helland, 1107 Technology Parkway, Cedar Falls, Iowa 50613-6951, (319)-266-0161

UNITED STATES PUBLIC LAND SURVEY CORNER CERTIFICATE
OF

LAND SURVEY MONUMENTS SITUATED IN SECTION NO. 10, TOWNSHIP NO. 89 NORTH, RANGE NO. 12 WEST OF THE FIFTH PRINCIPAL MERIDIAN, BLACK HAWK COUNTY, IOWA.
PREVIOUSLY RECORDED IN 331 MISC. 231

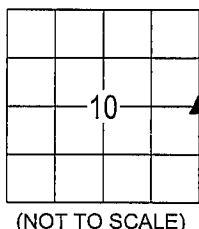
(SHOW REASON FOR PREPARING THIS CERTIFICATE, THE EVIDENCE AND DETAILED PROCEDURES USED IN ESTABLISHING THE CORNER POSITIONS AND MONUMENTATION FOUND OR PLACED.)

MONUMENT DESCRIPTION AND REMARKS:

USPLSCC 331 MISC. 231 MONUMENTATION HAS CHANGED. SURVEY COMPLETED IN THE SE 1/4 OF SEC. 3-T89N-R12W & NE 1/4 OF SEC. 10-T89N-R12W..

E 1/4 CORNER: BLACK HAWK COUNTY ENGINEER REFERENCE TIES DATED 11/29/1936 CALLS FOR [FOUND LIMESTONE SET I.B. ON N SIDE]. W.P.A. CORNER TIES DATED 4/20/1938 CALLS FOR [FOUND LIMESTONE 13" x 9" x 4" WITH IRON BAR 1" x 31". ALSO FOUND BADLY DECAYED OAK STAKE. STONE WAS BROKEN BY FROST. LOWERED EVIDENCE, AND SET C.M. ON TOP 12" DEEP]. BLACK HAWK COUNTY ENGINEER REFERENCE TIES DATED MARCH 1966 CALLS FOR [C.M.]. USPLSCC 331 MISC. 231 DATED 8/11/1998 CALLS FOR [FD. 1/2" REBAR]. FOUND CONCRETE MONUMENT w/BRASS CAP 0.1' DEEP. FOUND NO. 4 REBAR (USPLSCC 331 MISC. 231 [FD. 1/2" REBAR]) 0.15' N & 0.15' E OF SAID C.M. PLAN VIEW

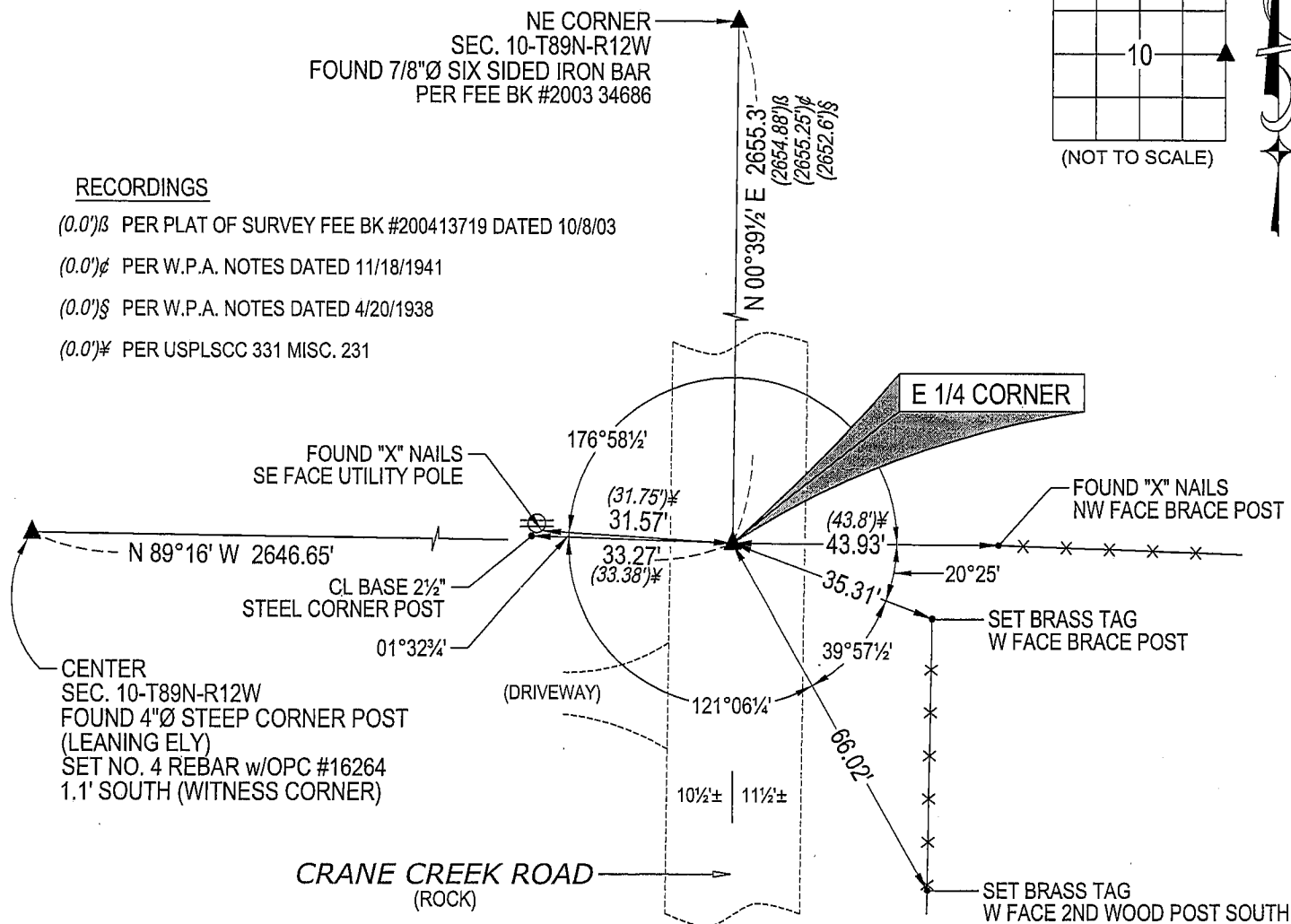
(SHOW A MINIMUM OF THREE REFERENCE TIES TO DURABLE PHYSICAL OBJECTS, RELEVANT MONUMENTS AND PHYSICAL CONDITIONS THAT WILL ENABLE RECOVERY OF THE CORNER.)



(NOT TO SCALE)

RECORDINGS

- (0.0')§ PER PLAT OF SURVEY FEE BK #200413719 DATED 10/8/03
- (0.0')¢ PER W.P.A. NOTES DATED 11/18/1941
- (0.0')§ PER W.P.A. NOTES DATED 4/20/1938
- (0.0')¥ PER USPLSCC 331 MISC. 231

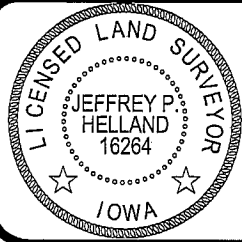


(BEARINGS ARE ASSUMED)



HELLAND ENGINEERING & SURVEYING, LTD.
1107 Technology Parkway
Cedar Falls, Iowa 50613-6951
(319)-266-0161

SHINER = 8D NAIL & 1 5/16\"/>



I hereby certify that this land surveying document was prepared and the related survey work was performed by me or under my direct personal supervision and that I am a duly licensed Land Surveyor under the laws of the State of Iowa.
Jeffrey P. Helland 2/13/08
Jeffrey P. Helland
License Number 16264
My license renewal date is December 31, 2009.
All pages or sheets are covered by this seal except:

LIST CORNERS TO BE INDEXED			
CORNER	SECTION	TOWNSHIP	RANGE
E 1/4 CORNER	10	89N	12W