

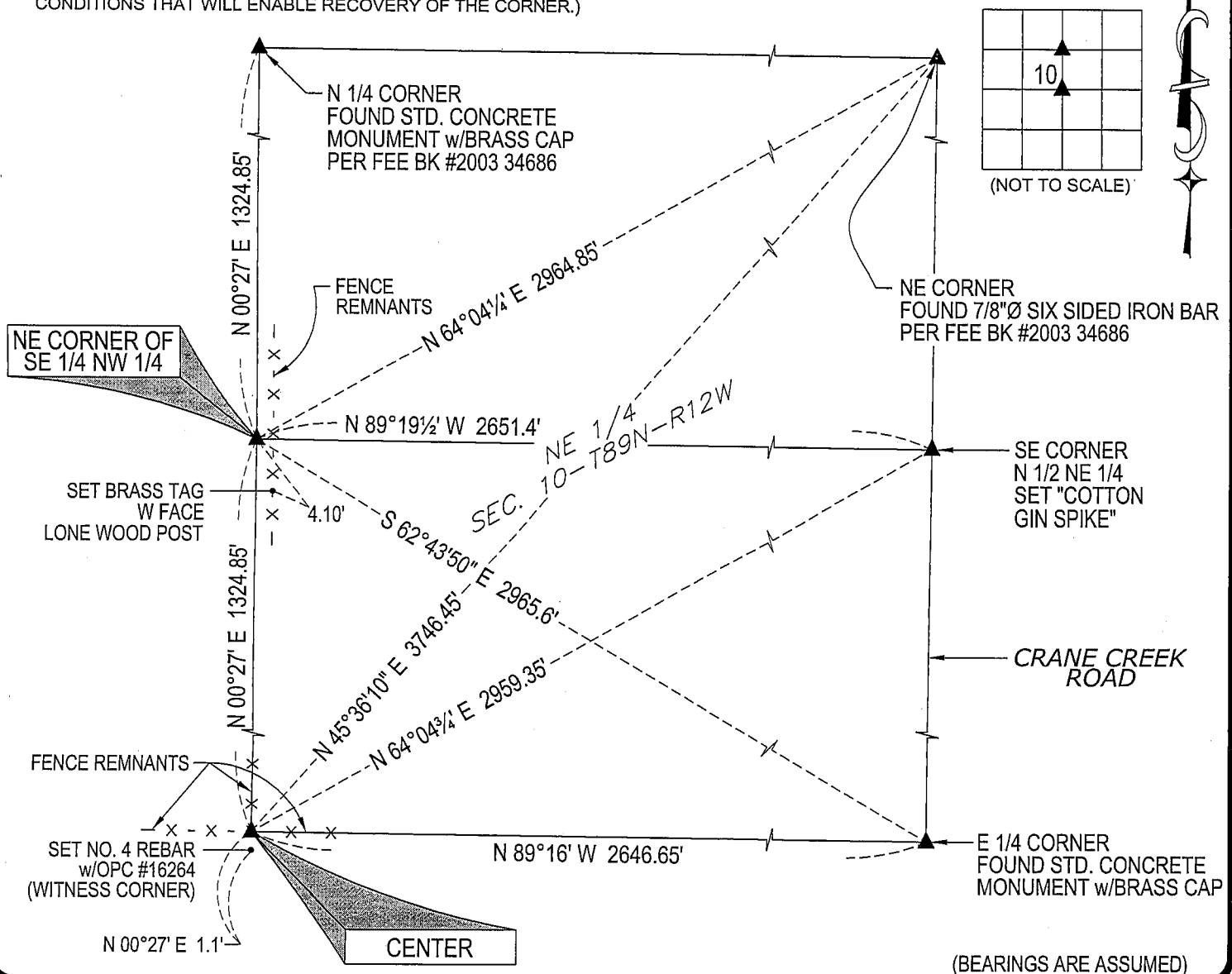
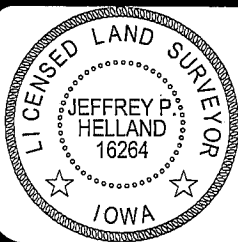
Jeffrey P. Helland, 1107 Technology Parkway, Cedar Falls, Iowa 50613-6951, (319)-266-0161

UNITED STATES PUBLIC LAND SURVEY CORNER CERTIFICATE
OFLAND SURVEY MONUMENTS SITUATED IN SECTION NO. 10, TOWNSHIP NO. 89 NORTH, RANGE
NO. 12 WEST OF THE FIFTH PRINCIPAL MERIDIAN, BLACK HAWK COUNTY, IOWA.PREVIOUSLY RECORDED IN N/A(SHOW REASON FOR PREPARING THIS CERTIFICATE, THE EVIDENCE AND DETAILED PROCEDURES USED IN ESTABLISHING THE
CORNER POSITIONS AND MONUMENTATION FOUND OR PLACED.)

MONUMENT DESCRIPTION AND REMARKS:

USPLSCC ON FILE RERERENCE TIES HAVE CHANGED. SURVEY COMPLETED IN THE SE 1/4 OF SEC.
3-T89N-R12W & NE 1/4 SEC. 10-T89N-R12W..→ **NE CORNER SE 1/4 NW 1/4:** NO BLACK HAWK COUNTY ENGINEER REFERENCE TIES AVAILABLE. SET NO. 4
REBAR w/OPC #16264 AT MIDPOINT OF A STRAIGHT LINE BETWEEN THE CENTER AND THE N 1/4 CORNER.
ONLY ONE DURABLE, GERMANE OBJECTS TO REFERENCE.→ **CENTER:** NO BLACK HAWK COUNTY ENGINEER REFERENCE TIES AVAILABLE. FOUND 4"Ø STEEL CORNER
POST WITH BRACES LYING NORTH, EAST, & WEST. UTILIZED CL POST AT BASE. SET NO. 4 REBAR w/OPC
#16264 1.1' SOUTH (WITNESS CORNER). ONLY ONE DURABLE, GERMANE OBJECTS TO REFERENCE.

PLAN VIEW

(SHOW A MINIMUM OF THREE REFERENCE TIES TO DURABLE PHYSICAL OBJECTS, RELEVANT MONUMENTS AND PHYSICAL
CONDITIONS THAT WILL ENABLE RECOVERY OF THE CORNER.)HELLAND ENGINEERING & SURVEYING, LTD.
1107 Technology Parkway
Cedar Falls, Iowa 50613-6951
(319)-266-0161SHINER = 8D NAIL & 1 5/16"Ø METAL SHINER
BRASS TAG = 13/16"Ø BRASS TAG
OPC = PLASTIC CAP (O=ORANGE, R=RED, Y=YELLOW)
(00') RECORDED AS FILE NAME: 08-119C4.DWGI hereby certify that this land surveying document was prepared
and the related survey work was performed by me or under my
direct personal supervision and that I am a duly licensed Land
Surveyor under the laws of the State of Iowa.Jeffrey P. Helland 2/13/08
Jeffrey P. Helland
License Number 16264
My license renewal date is December 31, 2009.
All pages or sheets are covered by this seal except:

LIST CORNERS TO BE INDEXED

CORNER	SECTION	TOWNSHIP	RANGE
NE CORNER SE 1/4 NW 1/4	10	89N	12W
CENTER	10	89N	12W