

ew

Prepared by & Return to: Herold - Reicks Surveying, 2206 East Bremer Avenue, Waverly, IA 50677, Ph. 319-483-5187

United States Public Land Survey Corner Certificate

Land Survey Monument situated in
Section 9, Township 89 North, Range 12 West of the Fifth Principal Meridian, **Black Hawk** County, Iowa.
On file in **Book 343, Page 583** in the County Recorder's office.

This certificate is being prepared in compliance with Iowa Code Chapter 355.11 because:

-
- ☐

There is no certificate on file for this corner.
- ☐
- There are no longer three valid ties of record.

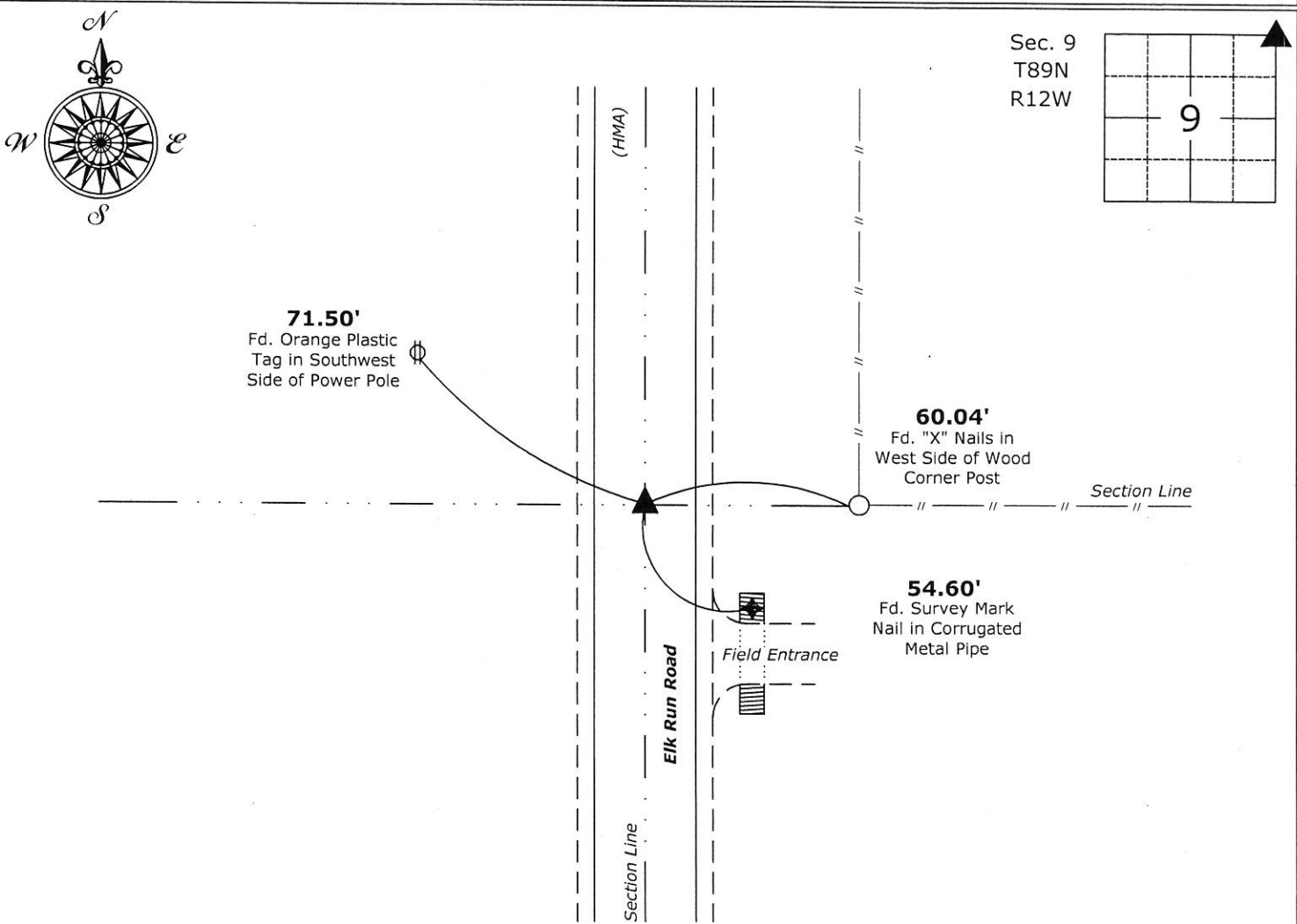
☐☒☐

Monument Description and Remarks:

Northeast Corner: The previously recorded Section Corner Certificate, indicates Found 5/8"Ø Rebar with Aluminum Cap "Black Hawk County Land Corner", said monument was removed during highway reconstruction. The position of said Section Corner was reestablished with information obtained from previously recorded Section Corner Certificate. Set 1"Ø Bronze Survey Marker PLS 22468 at said position to perpetuate the Corner. Corner reset in conjunction with Project No. FM-C007(149)--55-07.

Plan View

(Show a minimum of three reference ties to durable physical objects, relevant monuments and physical conditions that will enable recovery of the corner.)



Northeast Corner of Section 16-89-12
Set 1"Ø Bronze Survey Marker PLS 22468

PROFESSIONAL LAND SURVEYOR

ISAIAH M. REICKS

22468

IOWA

I hereby certify that this land surveying document was prepared and the related survey work was performed by me or under my direct personal supervision and that I am a duly licensed Land Surveyor under the laws of the State of Iowa.

Isaiah M. Reicks

Isaiah M. Reicks

Date:

3-4-19

License number 22468

My license renewal date is December 31, 2019.

Sheets covered by this seal: Individual sheet only

List Corner to be Indexed

Corner	Section	Twp.	Range
NE	9	89	12

Project Number: 2018-853

FB: Black Hawk 10, Pgs. 35