

PREPARED BY: BLACK HAWK COUNTY ENGINEERS OFFICE  
316 E. FIFTH STREET, ROOM 211 WATERLOO, IOWA 50703PH.# (319) 833-3008 SLSI 8-94  
FAX.# (319) 833-3139 CERT 12-96

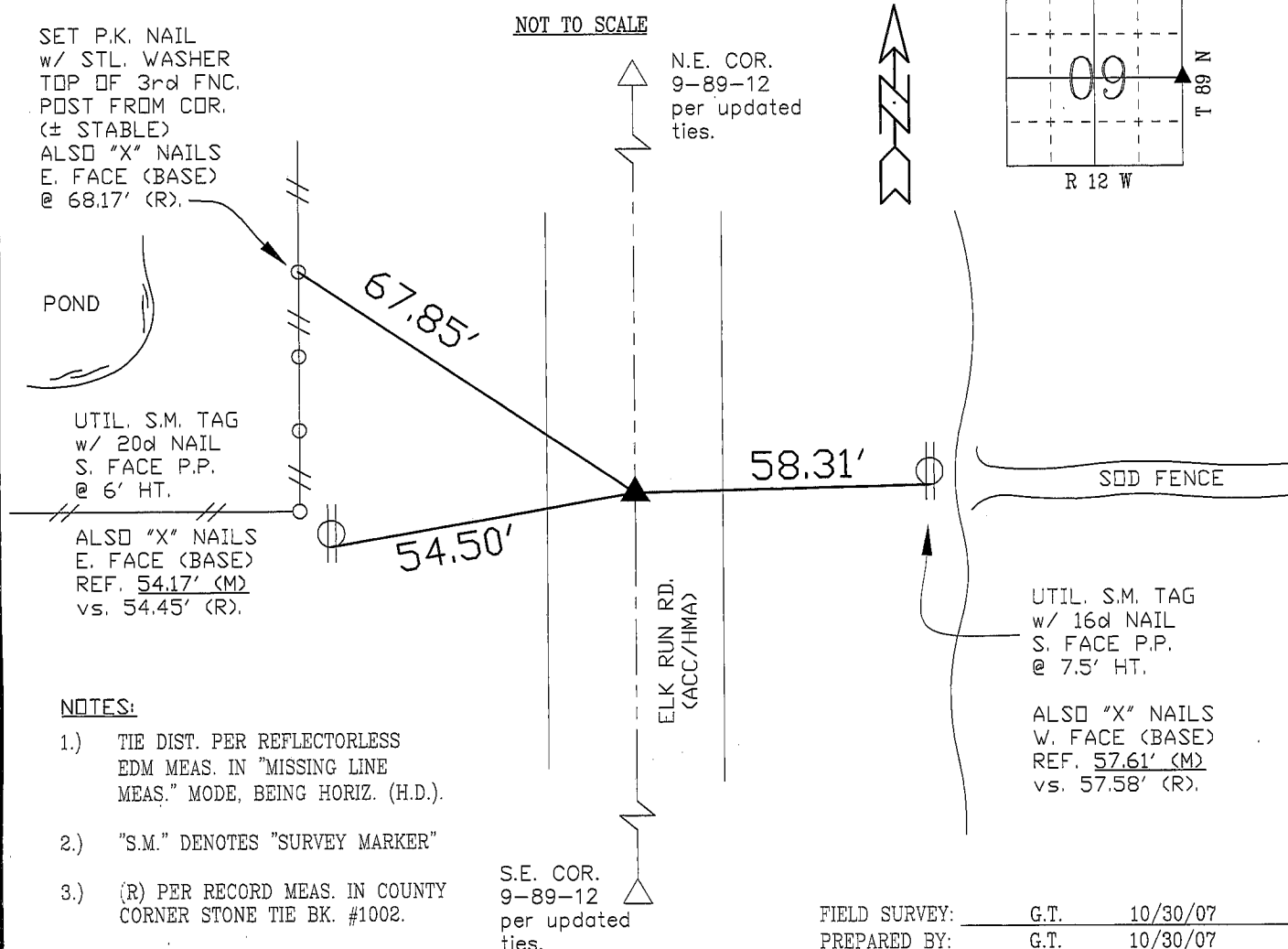
UNITED STATES PUBLIC LAND SURVEY CORNER CERTIFICATE OF  
Land Survey Monuments situated in Section 9, Township 89,  
Range 12, of the Fifth Principal Meridian, BLACK HAWK County, Iowa.  
Previously recorded in Misc. Book n/a, Page n/a, in County Recorder's Office.

(Show reason for preparing this certificate, the evidence and detailed procedures used in establishing the corner positions and monumentation found or placed.)

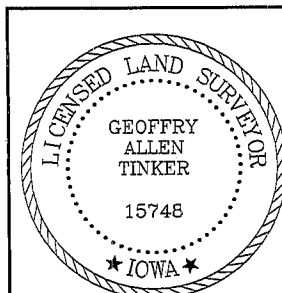
Monument Description and Remarks: 5/8" REBAR w/ 2" ALUM. CAP STAMPED  
"BLACK HAWK COUNTY LAND CORNER", PER TEMP. TIES IN BOOK 479 p.33 OF  
COUNTY ENG. SURVEY RECORD. COR. REF. FROM RESURF. PROJECT IN 2001,  
AS RESET FROM FND. LEAD PLUG IN PCC. CORNER LOC. ±C.L. ACC PAVEMENT,  
AND BEING TIED TO UPDATE PUBLIC RECORD AT REQUEST FOR PLAT OF  
SURVEY OF PARCEL NEAR S.1/4 CORNER IN SAID SECTION.

## PLAN - VIEW

(Show a minimum of three reference ties to durable physical objects, relevant monuments and physical conditions that will enable recovery of the corner.)



## CERTIFICATION



I hereby certify that this land surveying document was prepared and the related survey work was performed by me or under my direct personal supervision and that I am a duly licensed Land Surveyor under the laws of the State of Iowa.

*Geoffrey Allen Tinker* 10/30/07  
Geoffrey Allen Tinker (date)

License Number 15748

My license renewal date is December 31, 2008

Pages or sheets covered by this seal:

This Land Corner Certificate Only.

## LIST CORNERS TO BE INDEXED

Corner	Section	Township	Range
E. 1/4	9	89	12
W. 1/4	10	89	12