

Kyle J. Helland, 1107 Technology Parkway, Cedar Falls, Iowa 50613-6951, (319)-266-0161 Reserved for County Recorder's use.

UNITED STATES PUBLIC LAND SURVEY CORNER CERTIFICATE
OF

LAND SURVEY MONUMENTS SITUATED IN SECTION NO. 8, TOWNSHIP NO. 89 NORTH, RANGE NO. 12 WEST OF THE FIFTH PRINCIPAL MERIDIAN, BLACK HAWK COUNTY, IOWA.
PREVIOUSLY RECORDED IN N/A

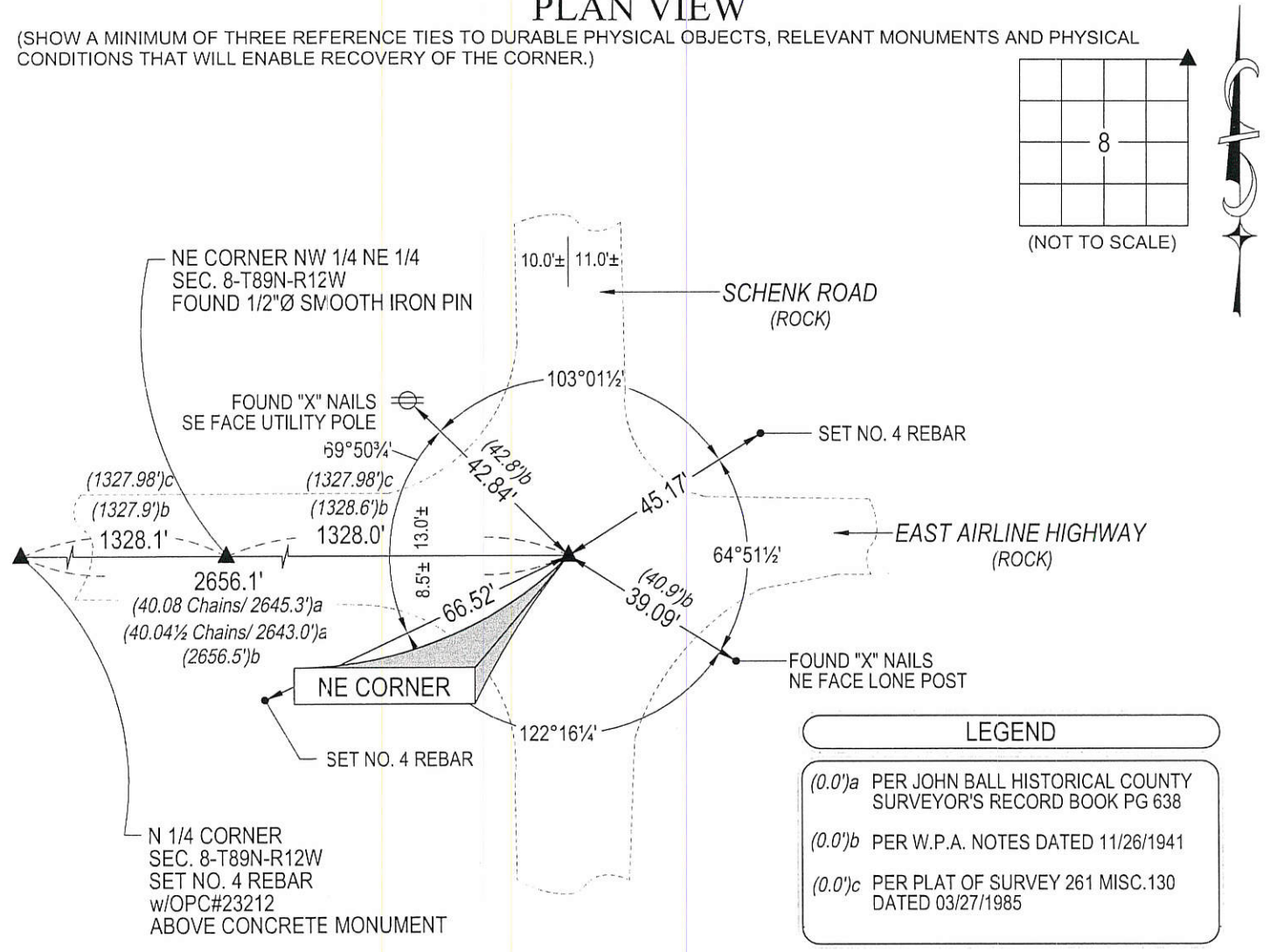
(SHOW REASON FOR PREPARING THIS CERTIFICATE, THE EVIDENCE AND DETAILED PROCEDURES USED IN ESTABLISHING THE CORNER POSITIONS AND MONUMENTATION FOUND OR PLACED.)

MONUMENT DESCRIPTION AND REMARKS:
NO USPLSCC ON FILE. SURVEY COMPLETED IN THE SE 1/4 OF SEC. 5-T89N-R12W.

NE CORNER: JOHN BALL HISTORICAL COUNTY SURVEYOR RECORD BOOK PAGE 638 (NO DATE) CALLS FOR [STONE]. W.P.A. NOTES DATED 11/26/1941 CALLS FOR [CONCRETE MONUMENT]. BLACK HAWK COUNTY ENGINEER TIES DATED 04/19/1944 AND 1987 CALLS FOR [CONCRETE MONUMENT]. SEARCHED AREA FOUND NO. 4 REBAR REMOVED REBAR AND PROBED HOLE HIT CONCRETE MONUMENT 1.3' DOWN. SET NO. 4 REBAR 1.0' IN LENGTH w/OPC# 23212 AT SAID LOCATION ABOVE CONCRETE MONUMENT CORRESPONDING TO LONE REMAINING TIE.

PLAN VIEW

(SHOW A MINIMUM OF THREE REFERENCE TIES TO DURABLE PHYSICAL OBJECTS, RELEVANT MONUMENTS AND PHYSICAL CONDITIONS THAT WILL ENABLE RECOVERY OF THE CORNER.)



HES HELLAND ENGINEERING & SURVEYING, LTD.
1107 Technology Parkway
Cedar Falls, Iowa 50613-6951
(319)-266-0161

SHINER = 8d. NAIL & 1 5/16" Ø METAL SHINER DRAWN BY: SMN
BRASS TAG = 8d. NAIL & 13/16" Ø BRASS TAG
OPC = PLASTIC CAP (O=ORANGE, R=RED, Y=YELLOW)
(00') RECORDED AS FILE NAME: 16-171-23.DWG



I hereby certify that this land surveying document was prepared and the related survey work was performed by me or under my direct personal supervision and that I am a duly licensed Professional Land Surveyor under the laws of the State of Iowa.
Kyle J. Helland 7-28-16
Kyle J. Helland
License Number 23212
My license renewal date is December 31, 2017.
All pages or sheets are covered by this seal except:

LIST CORNERS TO BE INDEXED			
CORNER	SECTION	TOWNSHIP	RANGE
NE CORNER	8	89N	12W
SE CORNER	5	89N	12W
SW CORNER	4	89N	12W
NW CORNER	9	89N	12W