

Kyle J. Helland, 1107 Technology Parkway, Cedar Falls, Iowa 50613-6951, (319)-266-0161

Reserved for County Recorder's use.

## UNITED STATES PUBLIC LAND SURVEY CORNER CERTIFICATE OF

LAND SURVEY MONUMENTS SITUATED IN SECTION NO. 8, TOWNSHIP NO. 89 NORTH, RANGE  
NO. 12 WEST OF THE FIFTH PRINCIPAL MERIDIAN, BLACK HAWK COUNTY, IOWA.  
PREVIOUSLY RECORDED IN N/A.

(SHOW REASON FOR PREPARING THIS CERTIFICATE, THE EVIDENCE AND DETAILED PROCEDURES USED IN ESTABLISHING THE  
CORNER POSITIONS AND MONUMENTATION FOUND OR PLACED.)

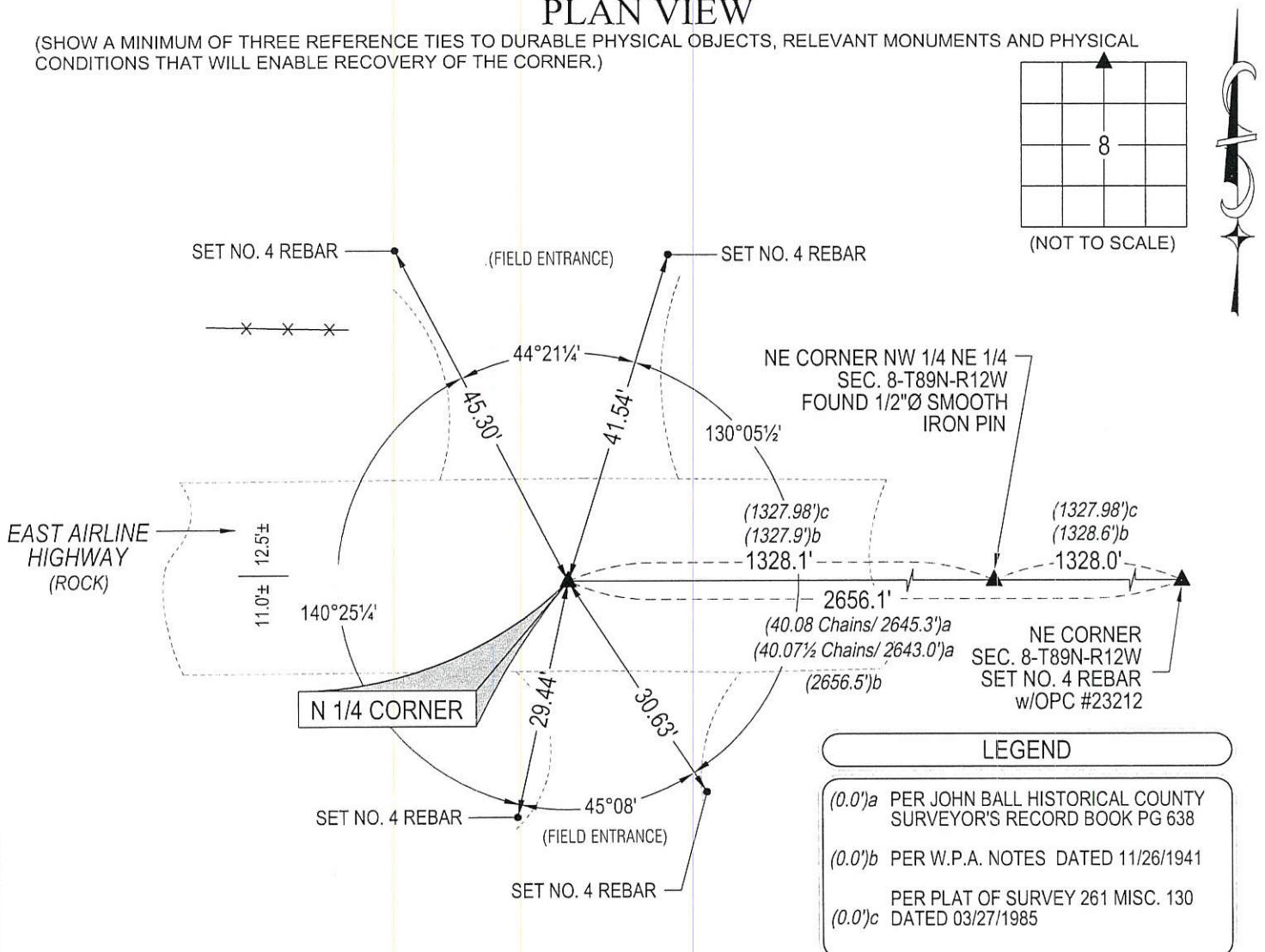
### MONUMENT DESCRIPTION AND REMARKS:

NO USPLSCC ON FILE. SURVEY COMPLETED IN THE SE 1/4 OF SEC. 5-T89N-R12W.

→ **N 1/4 CORNER:** W.P.A. PG 24 DATED 11/26/1941 CALLS FOR [C.M. 1.6' S.R.L.] BLACK HAWK COUNTY ENGINEER  
TIES DATED 04/19/1944 CALLS FOR [CONCRETE MONUMENT]. SEARCHED AREA FOUND NO. 4 REBAR.  
REMOVED REBAR AND PROBED AT SAID LOCATION OF REBAR AND HIT CONCRETE MONUMENT, THEREFORE,  
SET NO. 4 REBAR AT SAID LOCATION w/OPC #23212.

### PLAN VIEW

(SHOW A MINIMUM OF THREE REFERENCE TIES TO DURABLE PHYSICAL OBJECTS, RELEVANT MONUMENTS AND PHYSICAL  
CONDITIONS THAT WILL ENABLE RECOVERY OF THE CORNER.)



HELLAND ENGINEERING & SURVEYING, LTD.  
1107 Technology Parkway  
Cedar Falls, Iowa 50613-6951  
(319)-266-0161

SHINER = 8d. NAIL & 1 5/16" Ø METAL SHINER DRAWN BY: SMN  
BRASS TAG = 8d. NAIL & 13/16" Ø BRASS TAG  
OPC = PLASTIC CAP (O=ORANGE, R=RED, Y=YELLOW)  
(00') RECORDED AS FILE NAME: 16-171-24.DWG



I hereby certify that this land surveying document was prepared  
and the related survey work was performed by me or under my  
direct personal supervision and that I am a duly licensed  
Professional Land Surveyor under the laws of the State of Iowa.  
Kyle J. Helland  
License Number 23212  
My license renewal date is December 31, 2017.  
All pages or sheets are covered by this seal except:

LIST CORNERS TO BE INDEXED			
CORNER	SECTION	TOWNSHIP	RANGE
N 1/4 CORNER	8	89N	12W
S 1/4 CORNER	5	89N	12W