



Doc ID: 007090880001 Type: GEN
Recorded: 07/28/2016 at 03:28:15 PM
Fee Amt: \$7.00 Page 1 of 1
Black Hawk County Iowa
SANDIE L. SMITH RECORDER

File 2017-00001898

Kyle J. Helland, 1107 Technology Parkway, Cedar Falls, Iowa 50613-6951, (319)-266-0161

Reserved for County Recorder's use.

UNITED STATES PUBLIC LAND SURVEY CORNER CERTIFICATE OF

LAND SURVEY MONUMENTS SITUATED IN SECTION NO. 8, TOWNSHIP NO. 89 NORTH, RANGE
NO. 12 WEST OF THE FIFTH PRINCIPAL MERIDIAN, BLACK HAWK COUNTY, IOWA.
PREVIOUSLY RECORDED IN N/A.

(SHOW REASON FOR PREPARING THIS CERTIFICATE, THE EVIDENCE AND DETAILED PROCEDURES USED IN ESTABLISHING THE
CORNER POSITIONS AND MONUMENTATION FOUND OR PLACED.)

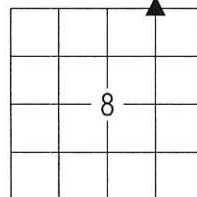
MONUMENT DESCRIPTION AND REMARKS:

NO USPLSCC ON FILE. SURVEY COMPLETED IN THE SE 1/4 OF SEC. 5-T89N-R12W.

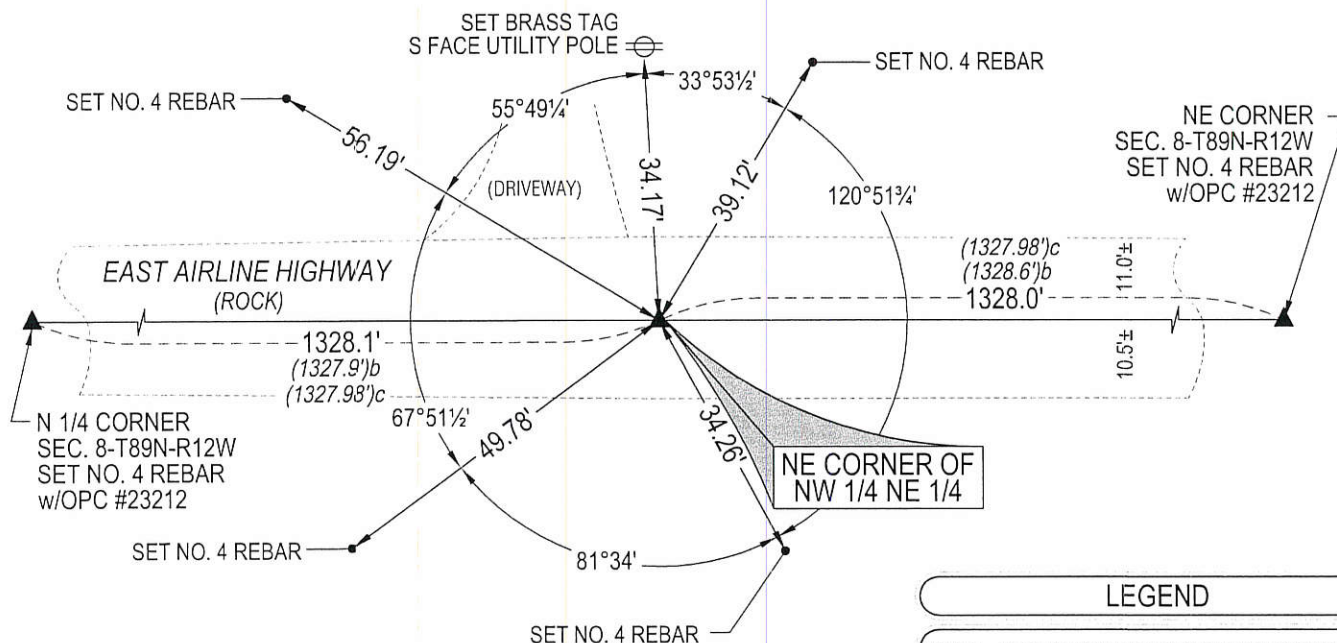
→ **NE 1/4 CORNER NW 1/4 NE 1/4:** NO BLACK HAWK COUNTY ENGINEER TIES AVAILABLE. PLAT OF SURVEY
DATED 03/27/1985 RECORDED IN MISC. BOOK 261 PAGE 130 REFERENCES SAID CORNER AT THE MID POINT OF
THE SE 1/4 OF SEC. 5-T89N-R12W. SEARCHED AREA FOUND 1/2"Ø SMOOTH IRON PIN 0.2' DEEP.

PLAN VIEW

(SHOW A MINIMUM OF THREE REFERENCE TIES TO DURABLE PHYSICAL OBJECTS, RELEVANT MONUMENTS AND PHYSICAL
CONDITIONS THAT WILL ENABLE RECOVERY OF THE CORNER.)



(NOT TO SCALE)



LEGEND

- (0.0')^b PER BLACK HAWK COUNTY ENGINEER
TIES PG 24 DATED 11/26/1941
(0.0')^c PER PLAT OF SURVEY BK 261 PG 130
DATED 03/27/1985



HELLAND ENGINEERING & SURVEYING, LTD.
1107 Technology Parkway
Cedar Falls, Iowa 50613-6951
(319)-266-0161

SHINER = 8d. NAIL & 1 5/16"Ø METAL SHINER DRAWN BY: SMN
BRASS TAG = 8d. NAIL & 13/16"Ø BRASS TAG
OPC = PLASTIC CAP (O=ORANGE, R=RED, Y=YELLOW)
(00') RECORDED AS FILE NAME: 16-171-43.DWG



I hereby certify that this land surveying document was prepared
and the related survey work was performed by me or under my
direct personal supervision and that I am a duly licensed
Professional Land Surveyor under the laws of the State of Iowa.

Kyle J. Helland 7-28-16
Kyle J. Helland
License Number 23212
My license renewal date is December 31, 2017.
All pages or sheets are covered by this seal except:

LIST CORNERS TO BE INDEXED

CORNER	SECTION	TOWNSHIP	RANGE
NE COR. NW 1/4 NE 1/4	8	89N	12W
SE COR. SW 1/4 SE 1/4	5	89N	12W
SW COR. SE 1/4 SE 1/4	5	89N	12W
NW COR. NE 1/4 NE 1/4	8	89N	12W