

*Prepared by & Return to: Herold - Reicks Surveying, 2206 East Bremer Avenue, Waverly, IA 50677, Ph. 319-483-5187

UNITED STATES PUBLIC LAND SURVEY CORNER CERTIFICATE

Land Survey Monuments situated in Section 7, Township 89 North, Range 12 West of the Fifth Principal Meridian, **Black Hawk** County, Iowa. Previously not recorded in the County Recorder's office.

This certificate is being prepared in compliance with Iowa Code Chapter 355.11 because:

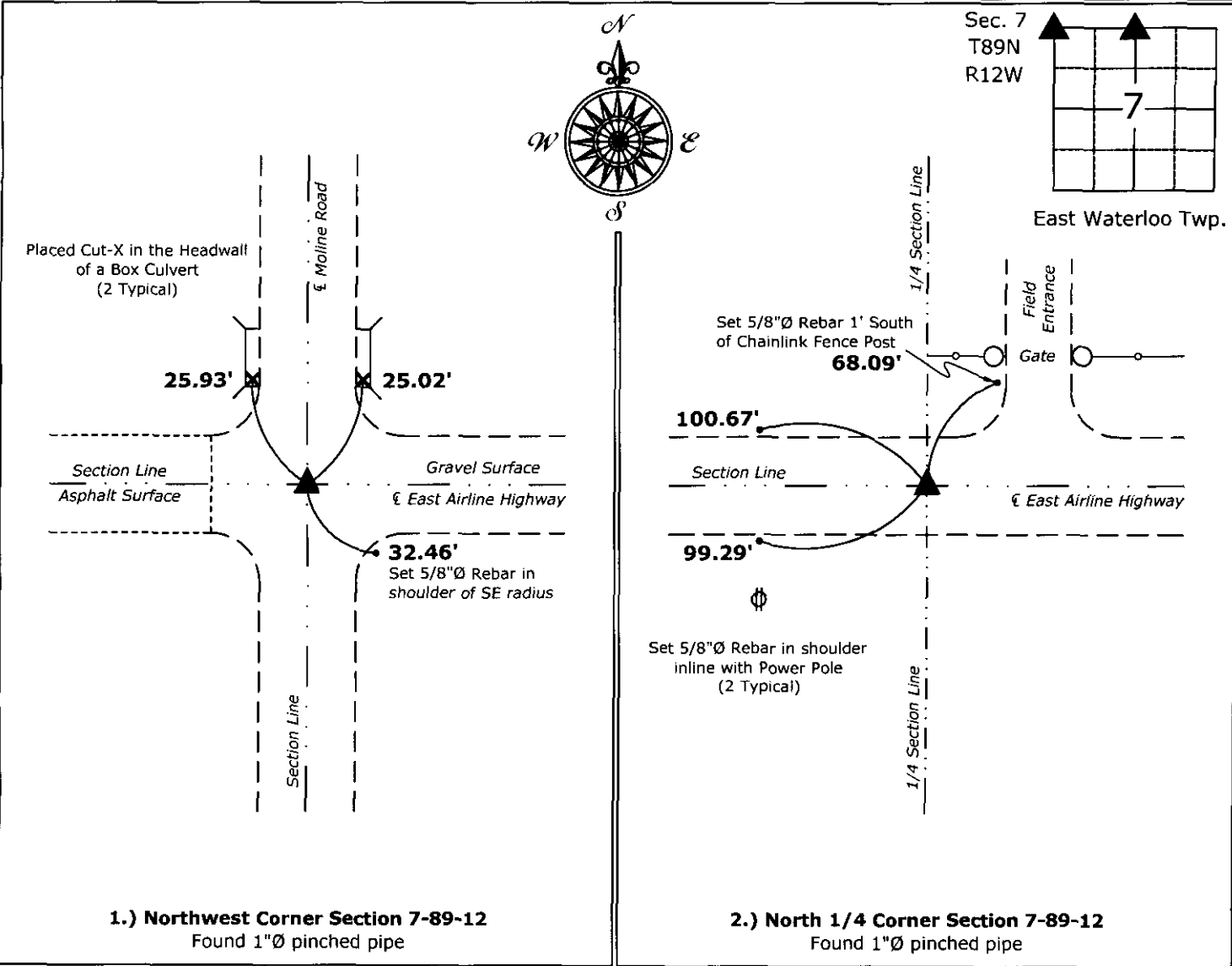
- 1 & 2 {
- ☒ There is no certificate on file for this corner.
☐ There are no longer three valid ties of record.
☐ There are changes to reference ties of record.
☐ There is change of monumentation of record.
☐ To clarify description of record monument (ties).

Monument Description and Remarks:

- 1.) **Northwest Corner:** Found 1"Ø pinched pipe from information on the following Survey and Plats, recorded in Book 326, Page 275 and in Book 318, Page 545, both on file in the Black Hawk County Recorders Office.
- 2.) **North 1/4 Corner:** Found 1"Ø pinched pipe from information on a Survey and Plat, recorded in Book 326, Page 275 on file in the Black Hawk County Recorders Office

PLAN - VIEW

(Show a minimum of three reference ties to durable physical objects, relevant monuments and physical conditions that will enable recovery of the corner.)



I hereby certify that this land surveying document was prepared and the related survey work was performed by me or under my direct personal supervision and that I am a duly licensed Land Surveyor under the laws of the State of Iowa.

Isaiah M. Reicks 11-30-15
Isaiah M. Reicks Date:
License number 22468
My license renewal date is December 31, 2015.
Sheets covered by this seal: Individual sheet only

List Corners to be Indexed			
Corners	Section	Twp.	Range
NW	7	89	12
NQ	7	89	12

Project Number: 2015-375
FB: Black Hawk 10, Pgs. 6-8