

Kyle J. Helland, 6109 Chancellor Drive, Cedar Falls, Iowa 50613-6916, (319)-266-0161

Reserved for County Recorder's use.



Doc ID: 012105060001 Type: GEN
Recorded: 04/26/2024 at 09:08:08 AM
Fee Amt: \$7.00 Page 1 of 1
Black Hawk County Iowa
SANDIE L. SMITH RECORDER

File 2024-00013280

UNITED STATES PUBLIC LAND SURVEY CORNER CERTIFICATE OF

LAND SURVEY MONUMENTS SITUATED IN SECTION NO. 7, TOWNSHIP NO. 89 NORTH, RANGE
NO. 12 WEST OF THE FIFTH PRINCIPAL MERIDIAN, BLACK HAWK COUNTY, IOWA.
PREVIOUSLY RECORDED IN #2016-00010053

(SHOW REASON FOR PREPARING THIS CERTIFICATE, THE EVIDENCE AND DETAILED PROCEDURES USED IN ESTABLISHING THE
CORNER POSITIONS AND MONUMENTATION FOUND OR PLACED.)

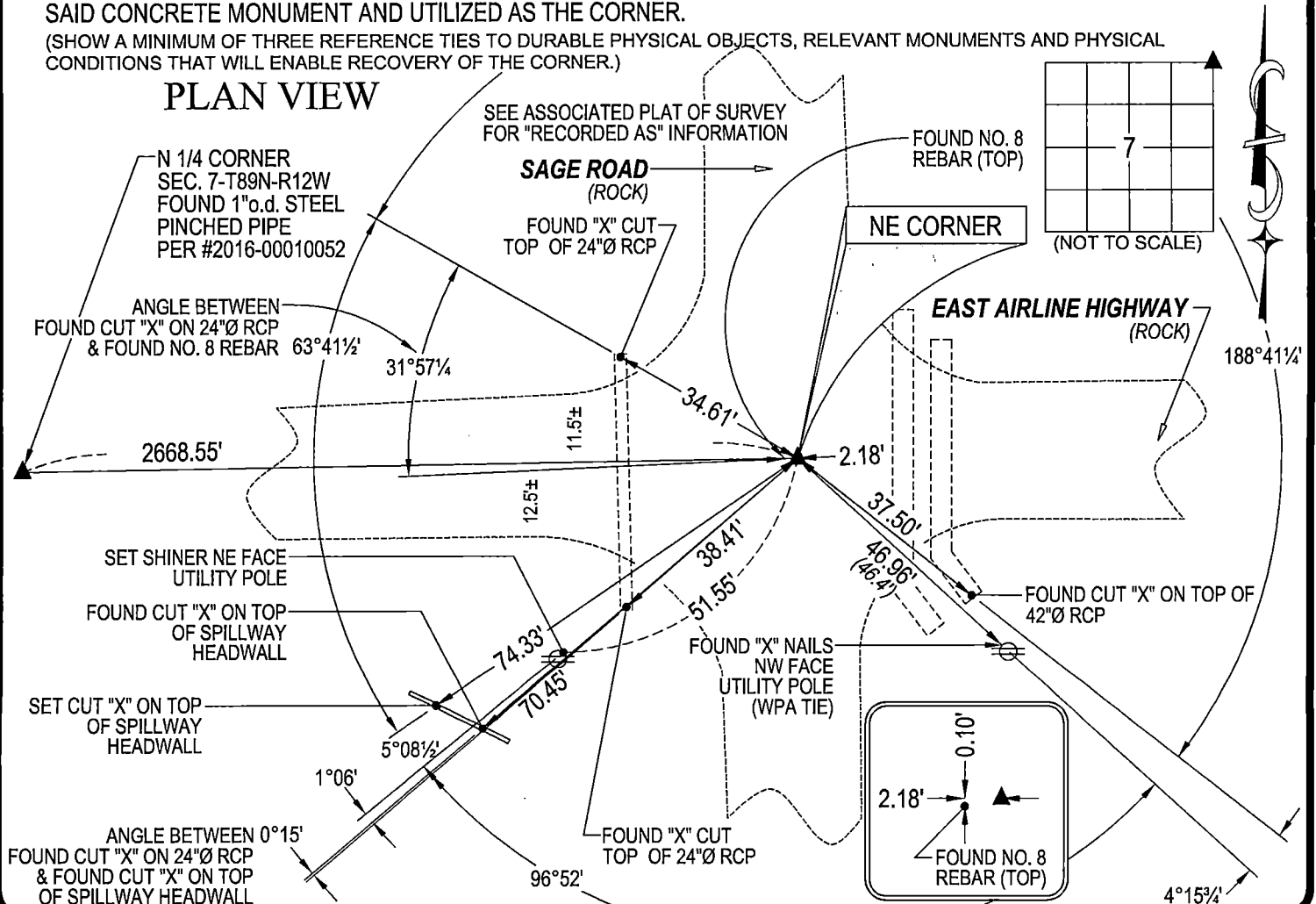
MONUMENT DESCRIPTION AND REMARKS:

MONUMENTATION AND POSITION DIFFERS FROM USPLSCC #2016-00010053. SURVEY COMPLETED IN THE SE 1/4 OF
SEC. 6-T89N-R12W.

→ **NE CORNER:** HISTORICAL SURVEY BY JOHN BALL DATED 05/01/1869 CALLS FOR [STONE IN OLD MOUND.] WPA NOTES
DATED 04/13/1938 CALLS FOR [FOUND *****HEAD 17"x9"x8", OAK HUB 2"x2"x18", IRON BAR 1"x32" ON SO. SIDE OF STONE,
FOUND THIS STONE 2' DEEP LOWERED STONE & EVIDENCE, AND PUT C.M. ON TOP 12" DEEP.] USPLSCC RECORDED IN
MISC. BOOK 327 PAGE 482 DATED 09/29/1997 CALLS FOR [ONE INCH (1") IRON RE-BAR 4" BELOW SURFACE, TOP 8" OF
BAR BENT TO THE NORTH. RE-BAR AND "X" NAILS WERE PREVIOUSLY SET BY OTHERS, NO CORNER CERTIFICATE ON
RECORD AT THIS DATE.] USPLSCC RECORDED IN #2016-00010053 DATED 11/30/2015 CALLS FOR [FOUND 1"Ø IRON PIN
(TOP 8" BENT) WITH PREVIOUS SECTION CORNER CERTIFICATE, BOOK 327, PAGE 482. STRAIGHTENED TOP PORTION
TO REESTABLISH THE CORNER'S POSITION AS ORIGINALLY MONUMENTED.] FOUND NO. 8 REBAR (1.6' LONG, 0.1±
DEEP) BENT NELY. FOUND NO. 8 REBAR WAS SUSPECT AS IT DID NOT FIT ONE REMAINING WPA REFERENCE TIE.
STARTED EXCAVATION EAST OF SAID NO. 8 REBAR AND FOUND STD. CONCRETE MONUMENT w/BRASS CAP 2.3± DEEP,
ALSO FOUND ½" SQUARE TWIST PIN ON SW SIDE OF CONCRETE MONUMENT. SET NO. 4 REBAR w/OPC #23212 ABOVE
SAID CONCRETE MONUMENT AND UTILIZED AS THE CORNER.

(SHOW A MINIMUM OF THREE REFERENCE TIES TO DURABLE PHYSICAL OBJECTS, RELEVANT MONUMENTS AND PHYSICAL
CONDITIONS THAT WILL ENABLE RECOVERY OF THE CORNER.)

PLAN VIEW



HELLAND ENGINEERING & SURVEYING, LTD.
6109 Chancellor Drive
Cedar Falls, Iowa 50613-6916
(319)-266-0161

BRASS TAG = 4d. NAIL & 13/16"Ø BRASS TAG DRAWN BY: JPH
SHINER = 1"Ø STEEL SHINER w/MASONRY NAIL
OPC = PLASTIC CAP (O=ORANGE, R=RED, Y=YELLOW)
(00') RECORDED AS FILE NAME: 24-137-23.DWG



I hereby certify that this land surveying document was prepared
and the related survey work was performed by me or under my
direct personal supervision and that I am a duly licensed
Professional Land Surveyor under the laws of the State of Iowa.

Kyle J. Helland 04/22/2024
Kyle J. Helland
License Number 23212
My license renewal date is December 31, 2025.
All pages or sheets are covered by this seal except:

LIST CORNERS TO BE INDEXED

CORNER	SECTION / TOWNSHIP / RANGE		
NE CORNER	7	89N	12W
SE CORNER	6	89N	12W
SW CORNER	5	89N	12W
NW CORNER	8	89N	12W