

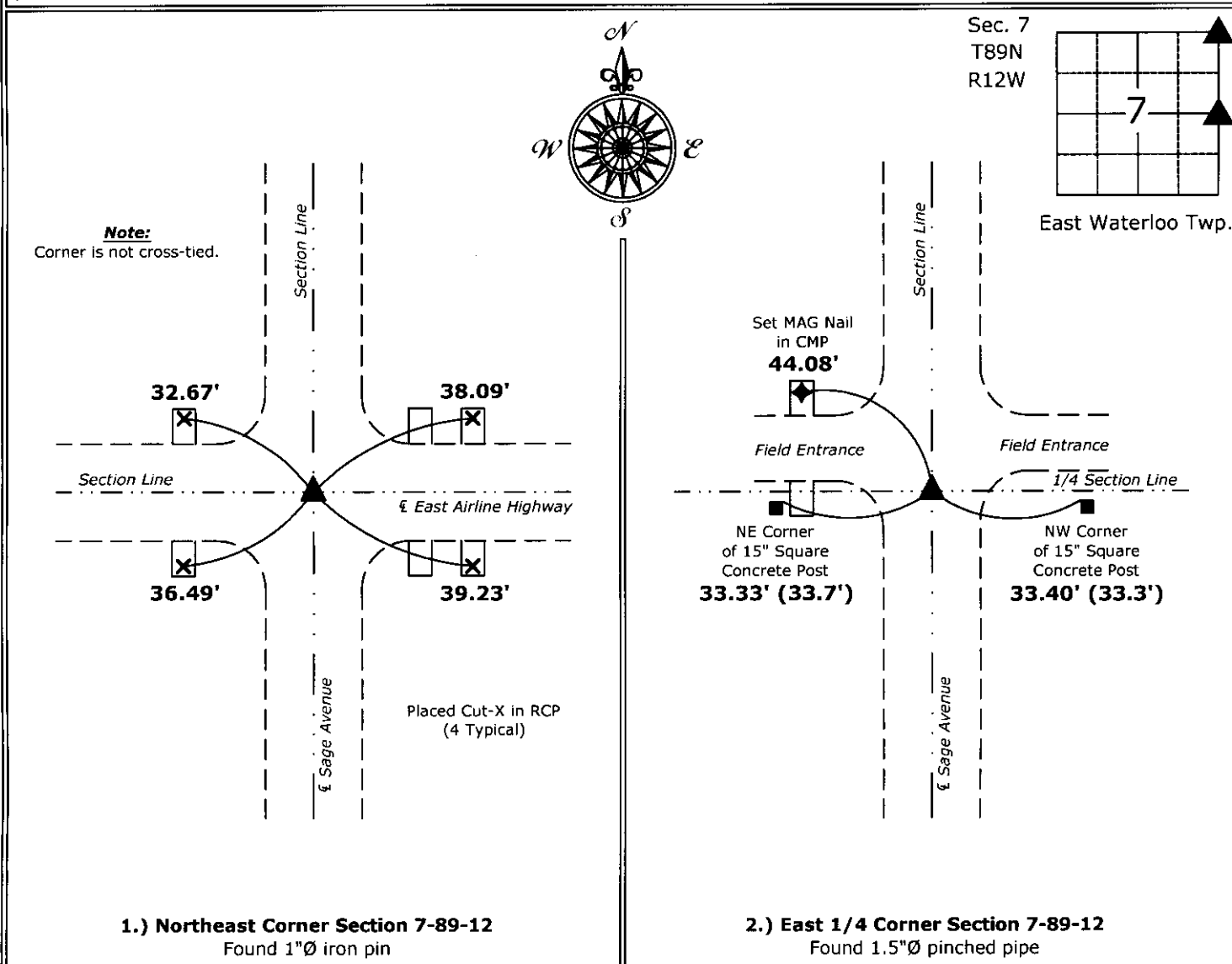
File **2016-00010053**

UNITED STATES PUBLIC LAND SURVEY CORNER CERTIFICATE

2 ☒ There is no certificate on file for this corner.  
1 ☒ There are no longer three valid ties of record.  
☐ There are changes to reference ties of record.  
1 ☒ There is change of monumentation of record.  
☐ To clarify description of record monument (ties).

**2.) East 1/4 Corner:** Found 1.5"Ø pinched pipe with information obtained from the section corner tie notes in the Black Hawk County Engineer's Office (dated May 11, 1938).

(Show a minimum of three reference ties to durable physical objects, relevant monuments and physical conditions that will enable recovery of the corner.)



License number 22468  
My license renewal date is December 31, 2015.  
Sheets covered by this seal: Individual sheet only

List Corners to be Indexed			
Corners	Section	Twp.	Range
NE	7	89	12
EQ	7	89	12

Project Number: 2015-375  
 File Number: 2015-00000053 Seq  
 FB: Black Hawk 10. Pgs. 6-8