

WAYNE CLAASSEN ENGINEERING AND SURVEYING, INC.
P.O. BOX 898 WATERLOO, IOWA 50704-0898

PHONE: (VOICE) 319-235-6294
(FAX) 319-235-0028

UNITED STATES PUBLIC LAND SURVEY CORNER CERTIFICATE

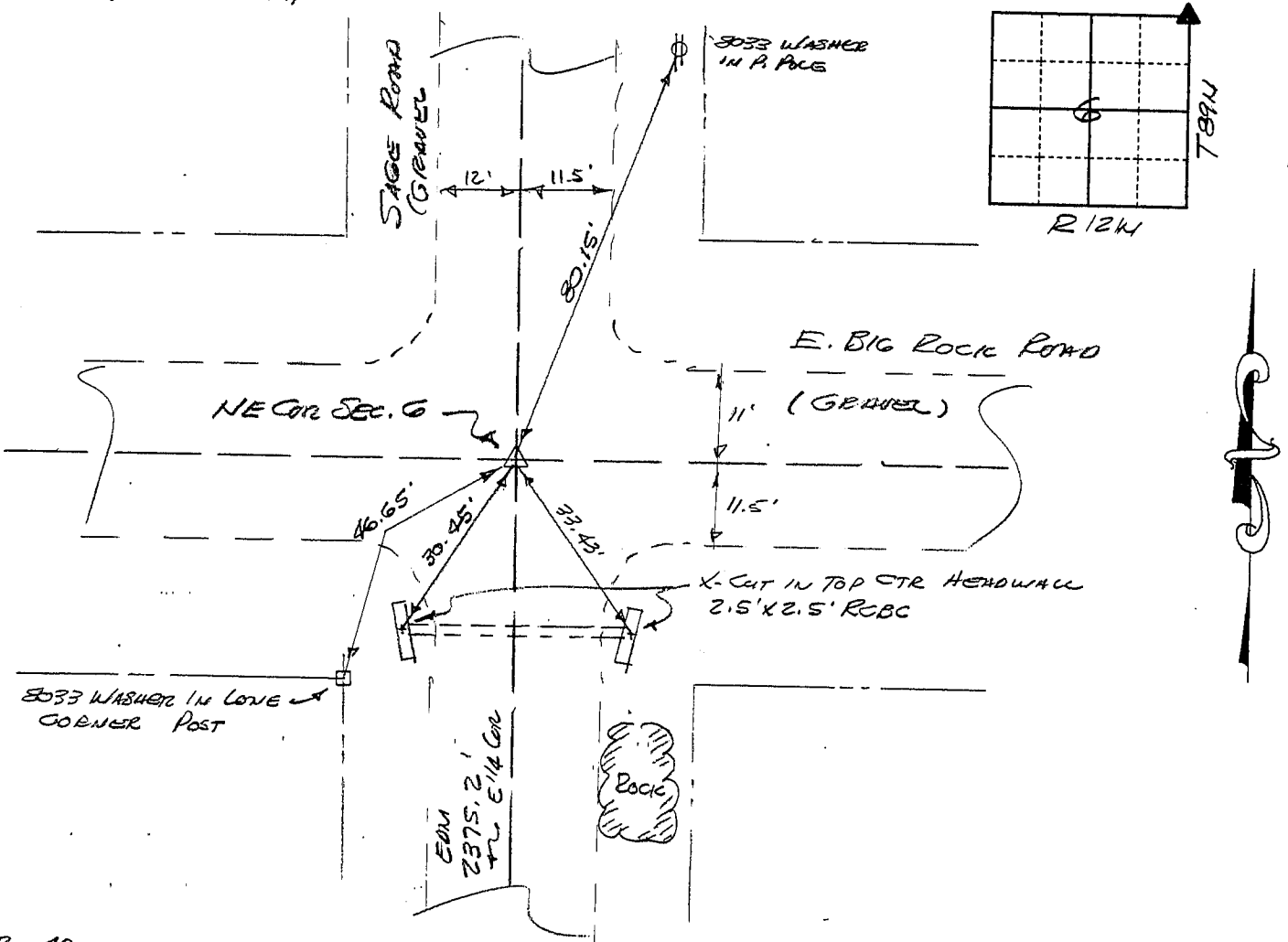
Land Survey Monuments situated in Section 6, Township 89N, Range 12W, of the Fifth Principal Meridian, BLACK HAWK County, Iowa.
Previously recorded in N/A (book, page, document number, etc.) in County Recorder's Office.

(Show reason for preparing this certificate, the evidence and detailed procedures used in establishing the corner positions and monumentation found or placed.)

Monument Description and Remarks FOUND 5/8" Ø REBAR 8" DEEP IN GRAVEL ROAD
AS REFERENCED BY CES 1975 COE VIRDEN CREEK FLOOD PROJECT.

PLAN - VIEW

(Show a minimum of three reference ties to durable physical objects, relevant monuments and physical conditions that enable recovery of the corner.)



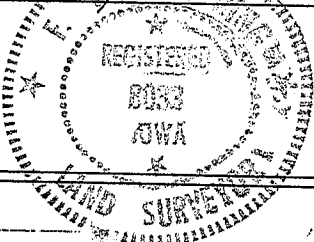
302-40

I hereby certify that the survey work was completed and this certificate was prepared by me or under my direct personal supervision and that I am a duly registered land surveyor under the laws of the state of Iowa.

Signature: F. William King
(Name, typed or printed: F. WILLIAM KING)

te: Nov 3, 1995 Reg. No. 8033

SEAL



List Corners to be Indexed

Corners	Section	Twp	Range
NE	6	89N	12W

MISC. BK. 318 p. 460