

I/V

Document Number: 2008000348

Date: Jul 03, 2007 4:30:00 pm

Aud Fee: 0.00 Rec Fee: 5.00

Trans Tax: 0.00 Rec Management Fee: 1.00

E-Com Fee: 1.00 Non-Standard Page Fee: 0.00

P

Filed for record in Black Hawk County, Iowa
Judith A. McCarthy, County Recorder

Z

Paul H. Helland, 1107 Technology Parkway, Cedar Falls, Iowa 50613-6951, (319)-266-0161

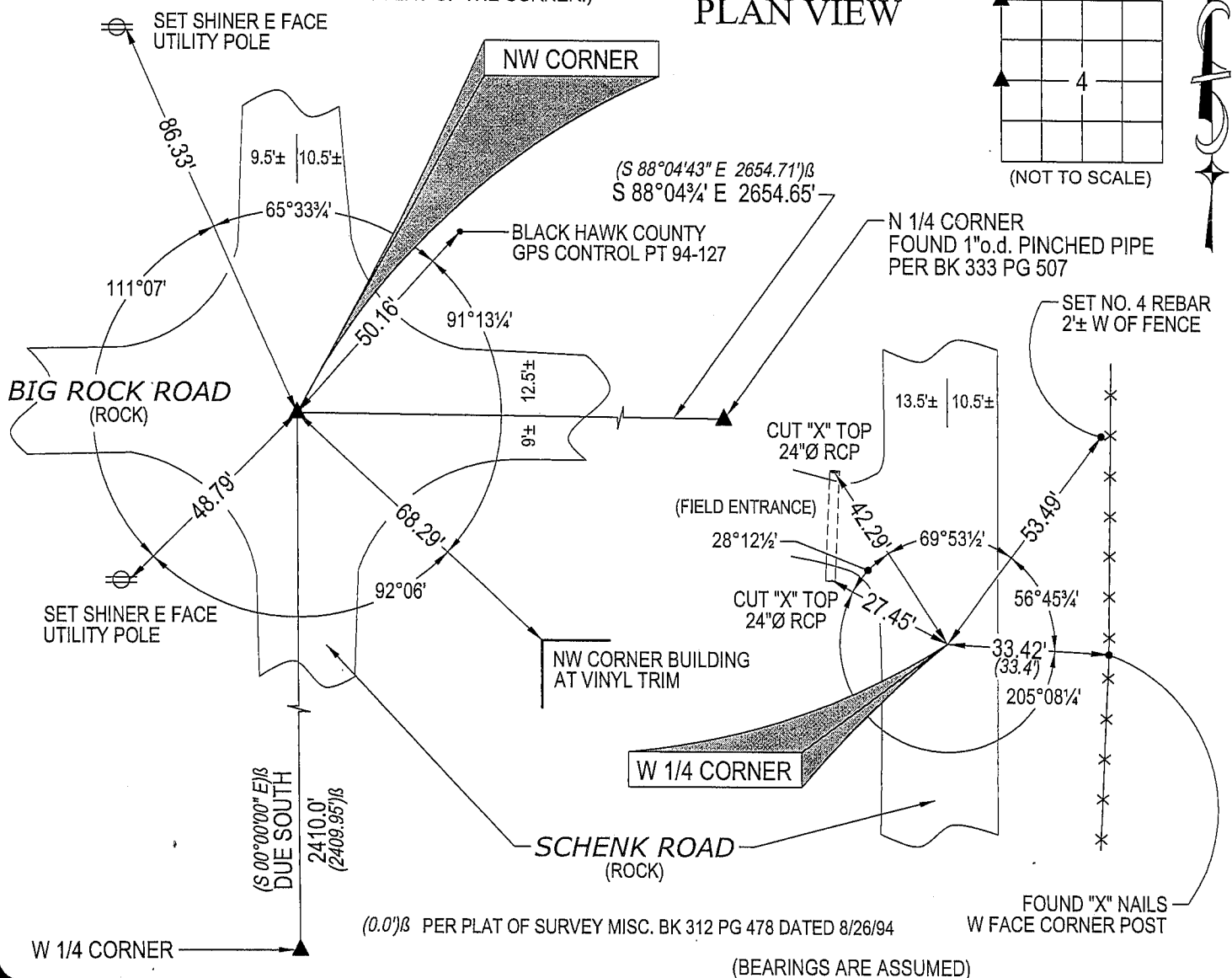
UNITED STATES PUBLIC LAND SURVEY CORNER CERTIFICATE
OFLAND SURVEY MONUMENTS SITUATED IN SECTION NO. 4, TOWNSHIP NO. 89 NORTH, RANGE
NO. 12 WEST OF THE FIFTH PRINCIPAL MERIDIAN, BLACK HAWK COUNTY, IOWA.
PREVIOUSLY RECORDED IN N/A(SHOW REASON FOR PREPARING THIS CERTIFICATE, THE EVIDENCE AND DETAILED PROCEDURES USED IN ESTABLISHING THE
CORNER POSITIONS AND MONUMENTATION FOUND OR PLACED.)

MONUMENT DESCRIPTION AND REMARKS:

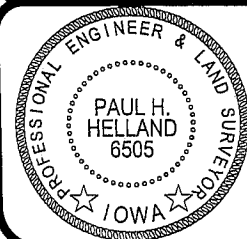
NO USPLSCC ON FILE. SURVEY COMPLETED IN THE NW FRL 1/4 OF SEC. 4-T89N-R12W.

→ **NW CORNER:** BLACK HAWK COUNTY ENGINEER REFERENCE TIES (DATED RETIED 7/9/69) CALL FOR [S.C.M.]
PLAT OF SURVEY MISC. BK 312 PG 478 DATED 8/26/94 CALLS FOR [FOUND PIN]. FOUND NO. 6 REBAR 0.3' DEEP
CORRESPONDING TO SAID PLAT OF SURVEY.→ **W 1/4 CORNER:** BLACK HAWK COUNTY ENGINEER REFERENCE TIES (DATED RETIED 7/9/69) CALL FOR [S.C.M.]
PLAT OF SURVEY MISC. BK 312 PG 478 DATED 8/26/94 CALLS FOR [FOUND TWIST PIN]. FOUND 1/2" TWIST PIN
0.2' DEEP CORRESPONDING TO SAID PLAT OF SURVEY & ONLY REMAINING ENGINEER REFERENCE TIE.(SHOW A MINIMUM OF THREE REFERENCE TIES TO DURABLE PHYSICAL OBJECTS, RELEVANT MONUMENTS AND PHYSICAL
CONDITIONS THAT WILL ENABLE RECOVERY OF THE CORNER.)

PLAN VIEW



(BEARINGS ARE ASSUMED)

HELLAND ENGINEERING & SURVEYING, LTD.
1107 Technology Parkway
Cedar Falls, Iowa 50613-6951
(319)-266-0161SHINER = 8D NAIL & 1 5/16" Ø METAL SHINER
BRASS TAG = 13/16" Ø BRASS TAG
OPC = PLASTIC CAP (O=ORANGE, R=RED, Y=YELLOW)
(00') RECORDED AS FILE NAME: 07-176C1.DWGI hereby certify that this land surveying document was prepared
and the related survey work was performed by me or under my
direct personal supervision and that I am a duly licensed Land
Surveyor under the laws of the State of Iowa.*Paul H. Helland* 6/15/07
Paul H. Helland
License Number 6505
My license renewal date is December 31, 2007.
All pages or sheets are covered by this seal except:

LIST CORNERS TO BE INDEXED

CORNER	SECTION	TOWNSHIP	RANGE
NW CORNER	4	89N	12W
W 1/4 CORNER	4	89N	12W