

SC
Misc
INDEX 98
MARGIN
PROOF
COMPARE

BLACK HAWK COUNTY IOWA: SS 3142
Filed for record Aug 15, 19 97 at 314
4:00 P.M. and recorded in Book 326
of Misc Page 730
C. J. S. S. Recorder
Fee 1-5.00x
PAUL HELLAND

County Assessor

PAUL H. HELLAND, 1107 TECHNOLOGY PARKWAY, CEDAR FALLS, IOWA 50613, (319)-266-0161

UNITED STATES PUBLIC LAND SURVEY CORNER CERTIFICATE OF

Land Survey Monuments situated in Section 4, Township 89, Range 12, of the Fifth Principal Meridian, BLACK HAWK County, Iowa.
Previously recorded in Book _____, Page _____.

(Show reason for preparing this certificate, the evidence and detailed procedures used in establishing the corner positions and monumentation found or placed.)

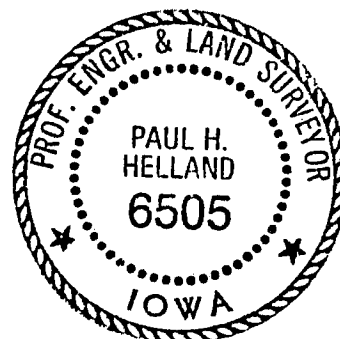
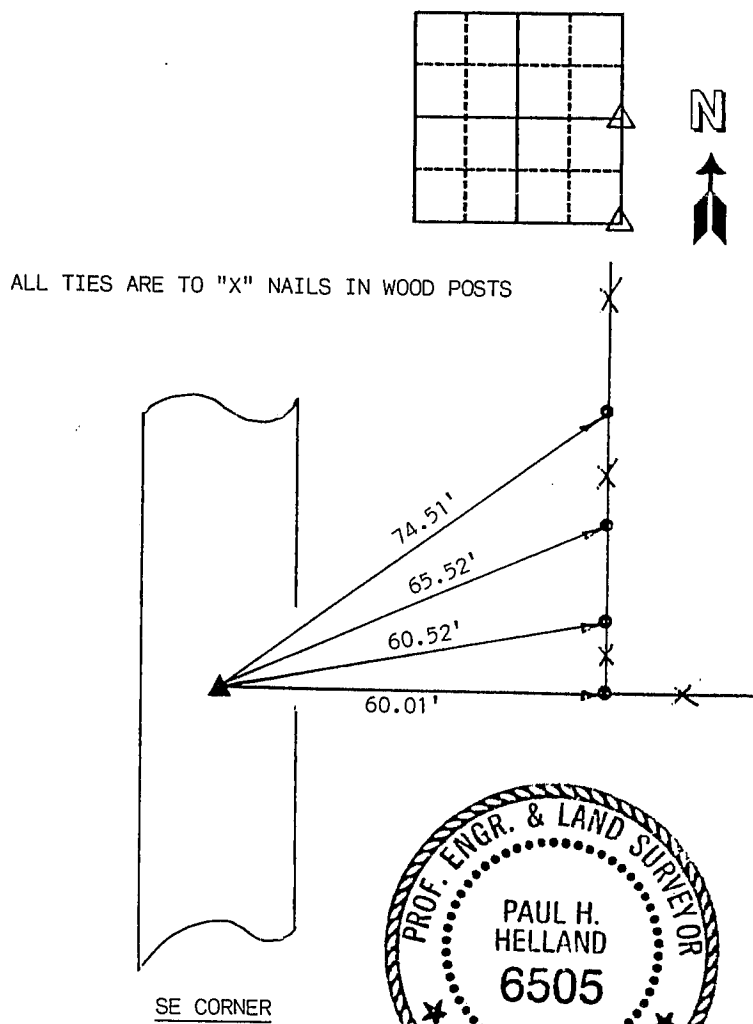
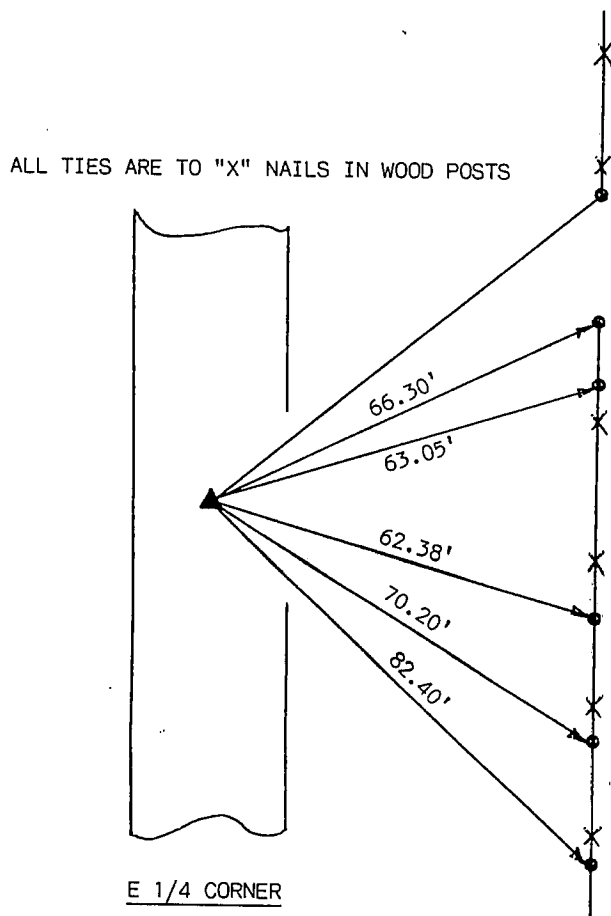
Monument Description and Remarks: SURVEY DONE IN SE 1/4 SEC. 4-89-12.

E 1/4 CORNER - FOUND NAIL IN CONCRETE SLAB 0.09' EAST OF CENTERLINE JOINT.

SE CORNER - FOUND NAIL IN LEAD PLUG 2.36' EAST OF CENTERLINE JOINT.

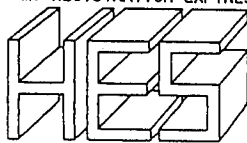
PLAN - VIEW

(Show a minimum of three reference ties to durable physical objects, relevant monuments and physical conditions that will enable recovery of the corner.)



97-257

I HEREBY CERTIFY THAT THIS PLAT, MAP, SURVEY OR REPORT WAS MADE BY ME OR UNDER MY DIRECT PERSONAL SUPERVISION AND THAT I AM A DULY REGISTERED LAND SURVEYOR UNDER THE LAWS OF THE STATE OF IOWA.
PAUL H. HELLAND, P.E. & R.L.S. IOWA REGISTRATION NO. 6505
MY REGISTRATION EXPIRES DECEMBER 31, 1997



HELLAND ENGINEERING
& SURVEYING, LTD.
1107 TECHNOLOGY PARKWAY
CEDAR FALLS, IOWA 50613
319-266-0161

List Corners to be Indexed

Corners	Section	Twp	Range
E 1/4	4	89	12
SE	4	89	12

326-730