

SC
Misc
INDEX
MARGIN
PROOF
COMPARE

BLACK HAWK COUNTY IOWA: SS
Filed for record Mar 3, 1999, at
4:00 P.M. and recorded in Book 333
of Misc Page 507.
Recorder
Fee n/c
ENGINEER'S OFFICE

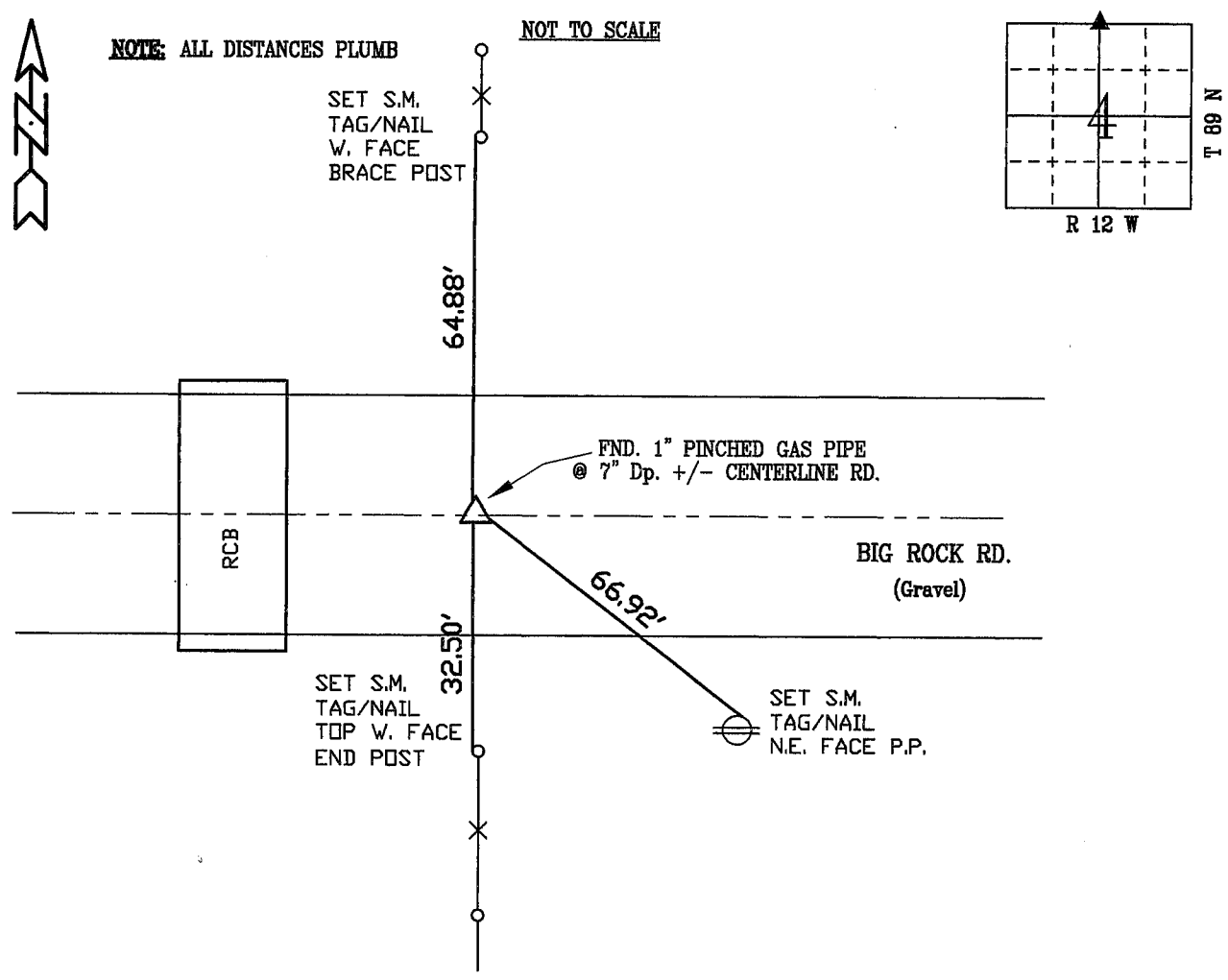
20566

PREPARED BY: BLACK HAWK COUNTY ENGINEERS OFFICE
316 E. FIFTH STREET, ROOM 211 WATERLOO, IOWA 50703
PH.# (319) 833-3008
FAX.# (319) 833-3139
SLSI 9-94
CERT 12-98

UNITED STATES PUBLIC LAND SURVEY CORNER CERTIFICATE OF
Land Survey Monuments situated in Section 4, Township 89 N,
Range 12 W, of the Fifth Principal Meridian, BLACK HAWK County, Iowa.
Previously recorded in Misc. Book N/A, Page N/A, in County Recorder's Office.
(Show reason for preparing this certificate, the evidence and detailed procedures used in establishing the corner
positions and monumentation found or placed.)
Monument Description and Remarks: FND. 1" PINCHED GAS PIPE LOC. 7" DP.
@ +/- CENTERLINE OF BIG ROCK RD. AND +/- FNC. LINES N-S.
CORNER LOC. AND RE-TIED DUE TO PLANNED REMOVAL OF EXISTING
RCB W/ RCP IN 1999.

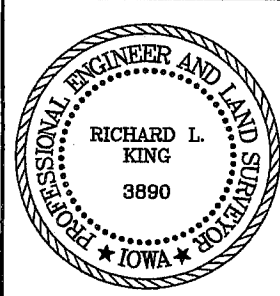
PLAN - VIEW

(Show a minimum of three reference ties to durable physical objects, relevant monuments and physical conditions
that will enable recovery of the corner.)



FIELD SURVEY: G.T. & C.W. 02/22/99
PREPARED BY: C.W. & G.T. 02/25/99

CERTIFICATION



I hereby certify that this land surveying document
was prepared and the related survey work was
performed by me or under my direct personal
supervision and that I am a duly licensed Land
Surveyor under the laws of the State of Iowa.
Richard L. King 3/1/99 (date)
License Number 3890
My license renewal date is December 31, 1999
Pages or sheets covered by this seal:
This Land Corner Certificate Only.

LIST CORNERS TO BE INDEXED

Corner	Section	Township	Range
N. 1/4	4	89 N	12 W