

United States Public Land Survey Corner Certificate

Land Survey Monument situated in
Section **3**, Township **89** North, Range **12** West of the Fifth Principal Meridian, **Black Hawk** County, Iowa.
On file in **Document #2003-34687** in the County Recorder's office.

This certificate is being prepared in compliance with Iowa Code Chapter 355.11 because:

- {**

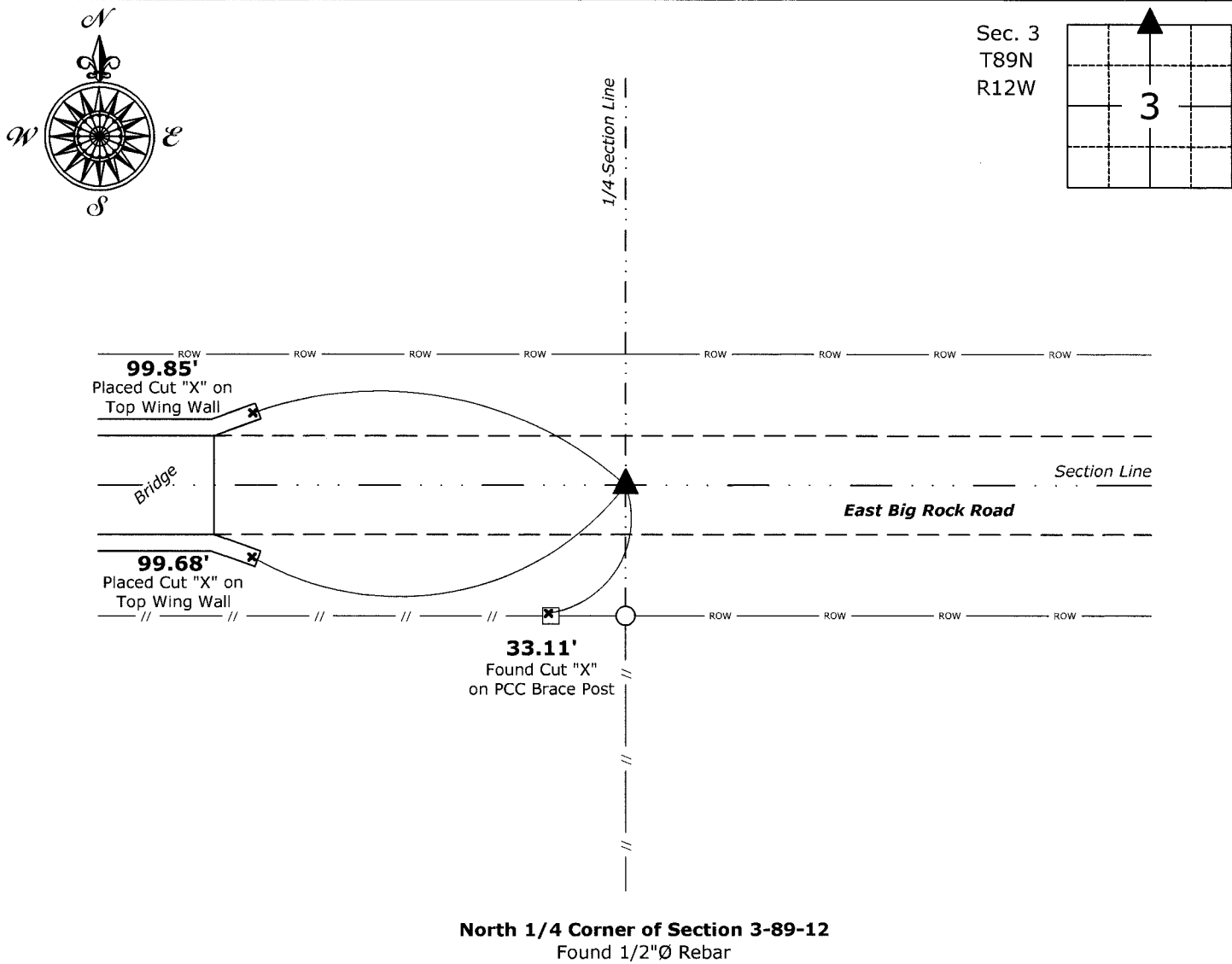
 - ☐ There is no certificate on file for this corner.
 - ☒ There are no longer three valid ties of record.
 - ☒ There are changes to reference ties of record.
 - ☐ There is change of monumentation of record.
 - ☐ To clarify description of record monument (ties).

Monument Description and Remarks:

North 1/4 Corner: Found 1/2"Ø Rebar with information obtained from the previously recorded Section Corner Certificate.

Plan View

(Show a minimum of three reference ties to durable physical objects, relevant monuments and physical conditions that will enable recovery of the corner.)



I hereby certify that this land surveying document was prepared and the related survey work was performed by me or under my direct personal supervision and that I am a duly licensed Land Surveyor under the laws of the State of Iowa.

Isaiah M. Reicks 2-17-22

Isaiah M. Reicks Date:

License number 22468

My license renewal date is December 31, 2023.

Sheets covered by this seal: Individual sheet only

List Corner to be Indexed			
Corner	Section	Twp.	Range
N 1/4	3	89	12

Project Number: 2021-595
FB: Black Hawk 1, Pgs. 30-32