

Paul H. Helland, 1107 Technology Parkway, Cedar Falls, Iowa 50613-6951, (319)-266-0161

UNITED STATES PUBLIC LAND SURVEY CORNER CERTIFICATE
OF

LAND SURVEY MONUMENTS SITUATED IN SECTION NO. 3, TOWNSHIP NO. 89 NORTH, RANGE NO. 12 WEST OF THE FIFTH PRINCIPAL MERIDIAN, BLACK HAWK COUNTY, IOWA.
PREVIOUSLY RECORDED IN BOOK, PAGE.

(SHOW REASON FOR PREPARING THIS CERTIFICATE, THE EVIDENCE AND DETAILED PROCEDURES USED IN ESTABLISHING THE CORNER POSITIONS AND MONUMENTATION FOUND OR PLACED.)

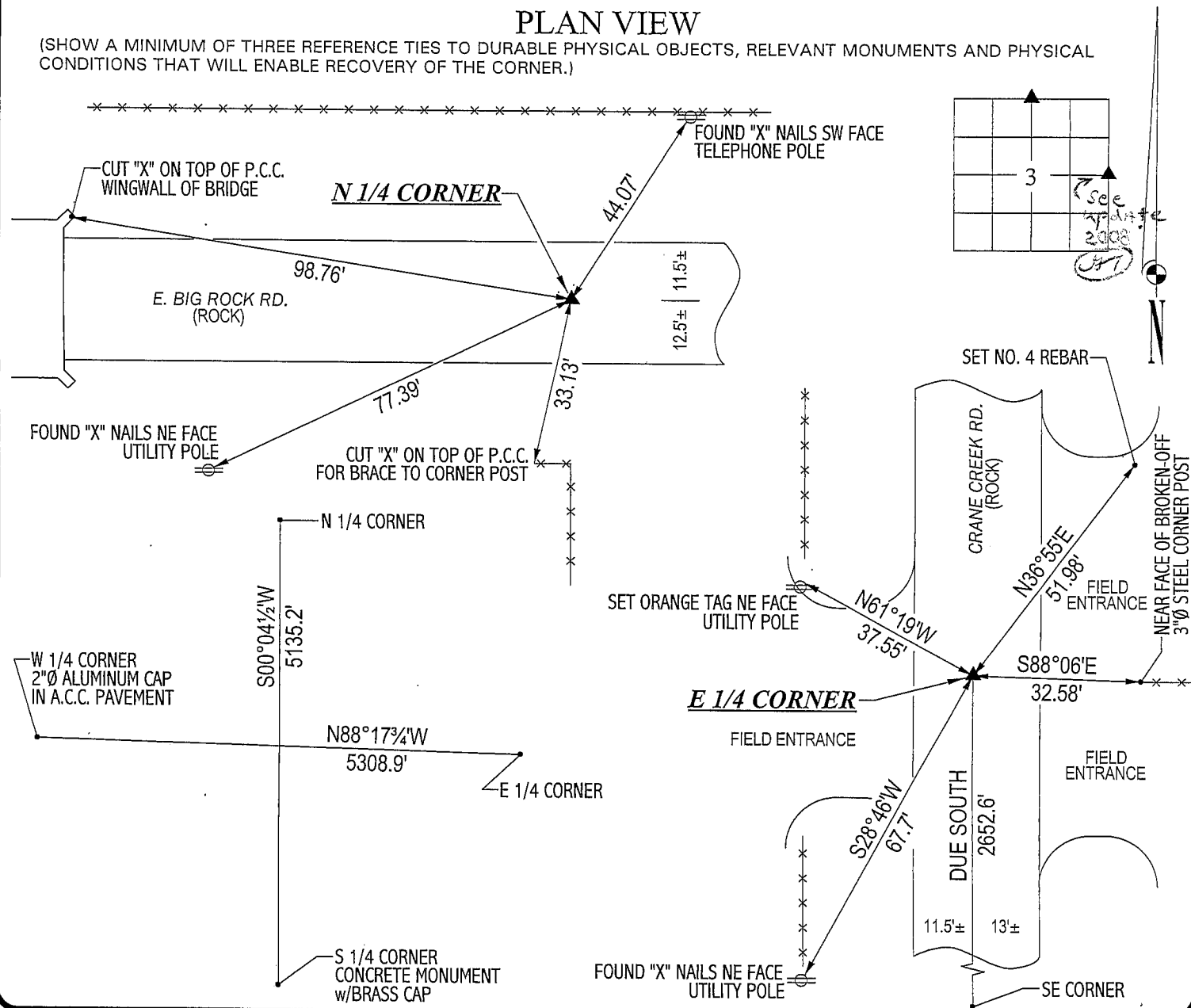
MONUMENT DESCRIPTION AND REMARKS:


NO CORNER CERTIFICATES ON FILE. SURVEY DONE IN S 1/2 SE 1/4 OF SEC. 3-T89N-R12W.

- N 1/4 CORNER: BLACK HAWK COUNTY ENGINEER REFERENCE TIES DATED 9/25/1962 CALLS FOR A CONCRETE MONUMENT, ALL TIES OBLITERATED. CONSTRUCTION OF BRIDGE TO THE WEST HAS SUBSTANTIALLY RAISED ELEVATION OF ROAD. FOUND NO. 4 REBAR w/YELLOW CAP #8033 SET BY F. WILLIAM KING ON 10/1986 PER PLAT OF SURVEY 270 MISC. 488. CORNER IS 0.1' DEEP.
- E 1/4 CORNER: BLACK HAWK COUNTY ENGINEER REFERENCE TIES DATED 7/20/1942 CALLS FOR A CONCRETE MONUMENT. FOUND SAID CONCRETE MONUMENT w/BRASS CAP 0.5' DEEP. SET NO. 4 REBAR ON NORTH SIDE FOR MAGNETIC DETECTION.

PLAN VIEW

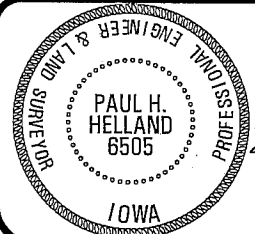
(SHOW A MINIMUM OF THREE REFERENCE TIES TO DURABLE PHYSICAL OBJECTS, RELEVANT MONUMENTS AND PHYSICAL CONDITIONS THAT WILL ENABLE RECOVERY OF THE CORNER.)





HELLAND ENGINEERING & SURVEYING, LTD.
1107 Technology Parkway
Cedar Falls, Iowa 50613-6951
(319)-266-0161

(00.00') - RECORDED AS FILE NAME: 03-171C1.DRG



I hereby certify that this land surveying document was prepared and the related survey work was performed by me or under my direct personal supervision and that I am a duly licensed Land Surveyor under the laws of the State of Iowa.
Paul H. Helland
Paul H. Helland
License Number 6505
My license renewal date is December 31, 2003.
All pages or sheets are covered by this seal except:

LIST CORNERS TO BE INDEXED			
CORNER	SECTION	TOWNSHIP	RANGE
N 1/4 CORNER	3	89N	12W
E 1/4 CORNER	3	89N	12W

Rec