

Number: 202200016852
Recorded: 2/21/2022 at 12:45:44.0 PM
County Recording Fee: \$7.00
Iowa E-Filing Fee: \$3.00
Combined Fee: \$10.00
Revenue Tax:
Sandie L. Smith, RECORDER
Black Hawk County, Iowa

Prepared by & Return to: Herold - Reicks Surveying, 2206 East Bremer Avenue, Waverly, IA 50677, Ph. 319-483-5187

United States Public Land Survey Corner Certificate

Land Survey Monument situated in
Section 3, Township 89 North, Range 12 West of the Fifth Principal Meridian, **Black Hawk** County, Iowa.
Not on file in the County Recorder's office.

This certificate is being prepared in compliance with Iowa Code Chapter 355.11 because:

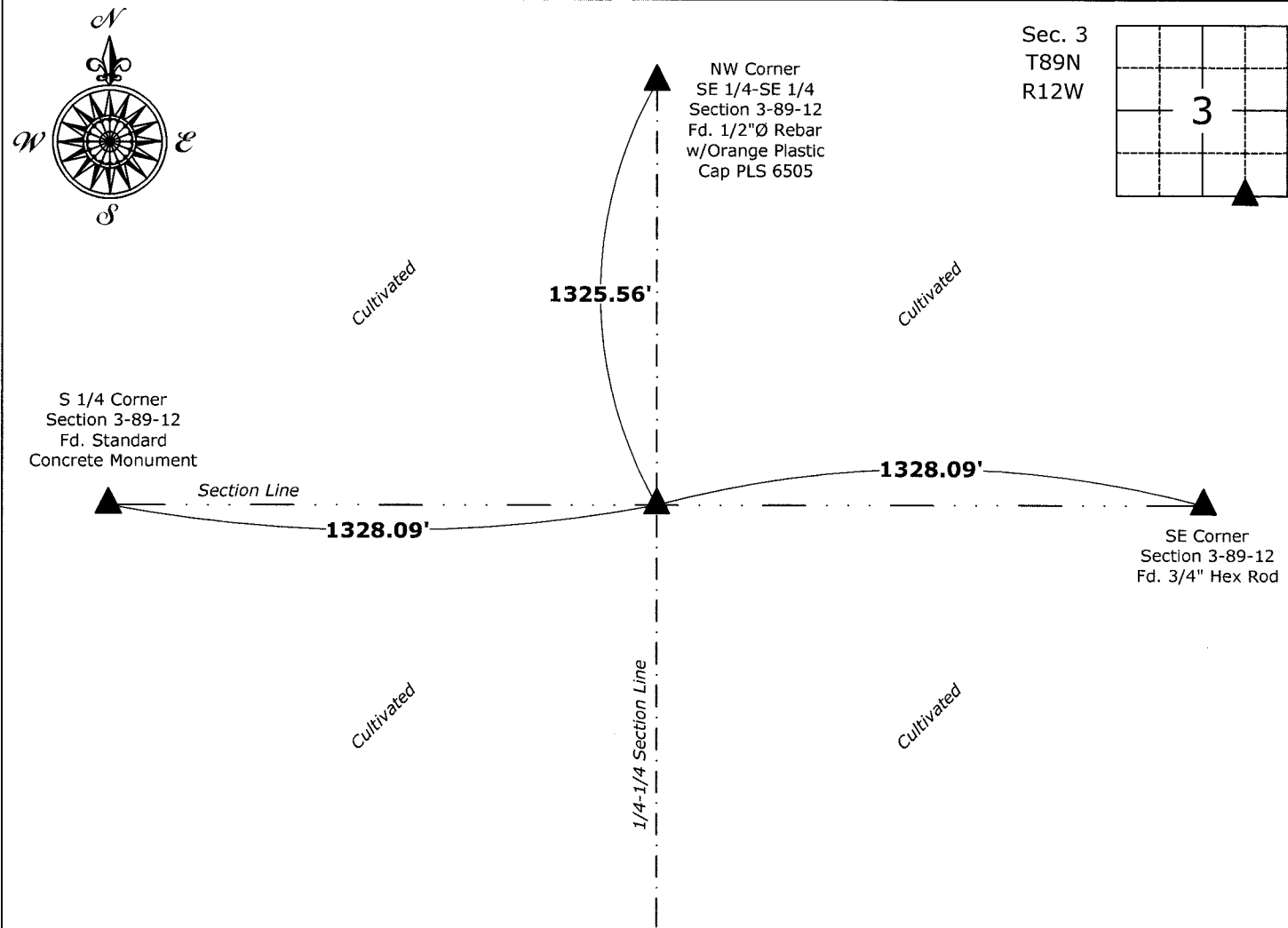
- ☒ There is no certificate on file for this corner.
☐ There are no longer three valid ties of record.
☐ There are changes to reference ties of record.
☐ There is change of monumentation of record.
☐ To clarify description of record monument (ties).

Monument Description and Remarks:

Southwest Corner SE 1/4 - SE 1/4: Set 5/8"Ø Rebar w/2"Ø Aluminum Cap PLS 22468, 12" Deep, equidistant and on line between the South 1/4 and Southeast Corners of said Section.

Plan View

(Show a minimum of three reference ties to durable physical objects, relevant monuments and physical conditions that will enable recovery of the corner.)



Southwest Corner SE 1/4 - SE 1/4 of Section 3-89-12
Set 5/8"Ø Rebar w/2"Ø Aluminum Cap PLS 22468



I hereby certify that this land surveying document was prepared and the related survey work was performed by me or under my direct personal supervision and that I am a duly licensed Land Surveyor under the laws of the State of Iowa.

Isaiah M. Reicks 2-17-22
Isaiah M. Reicks Date:
License number 22468
My license renewal date is December 31, 2023.
Sheets covered by this seal: Individual sheet only

| List Corner to be Indexed | | | |
|------------------------------|---------|------|-------|
| Corner | Section | Twp. | Range |
| SW-SE-SE | 3 | 89 | 12 |
| Project Number: 2021-595 | | | |
| FB: Black Hawk 1, Pgs. 30-32 | | | |