

Number: 202200016848
Recorded: 2/21/2022 at 12:45:44.0 PM
County Recording Fee: \$7.00
Iowa E-Filing Fee: \$3.00
Combined Fee: \$10.00
Revenue Tax:
Sandie L. Smith, RECORDER
Black Hawk County, Iowa

Prepared by & Return to: Herald - Reicks Surveying, 2206 East Bremer Avenue, Waverly, IA 50677, Ph. 319-483-5187

United States Public Land Survey Corner Certificate

Land Survey Monument situated in
Section 3, Township 89 North, Range 12 West of the Fifth Principal Meridian, **Black Hawk** County, Iowa.
Not on file in the County Recorder's office.

This certificate is being prepared in compliance with Iowa Code Chapter 355.11 because:

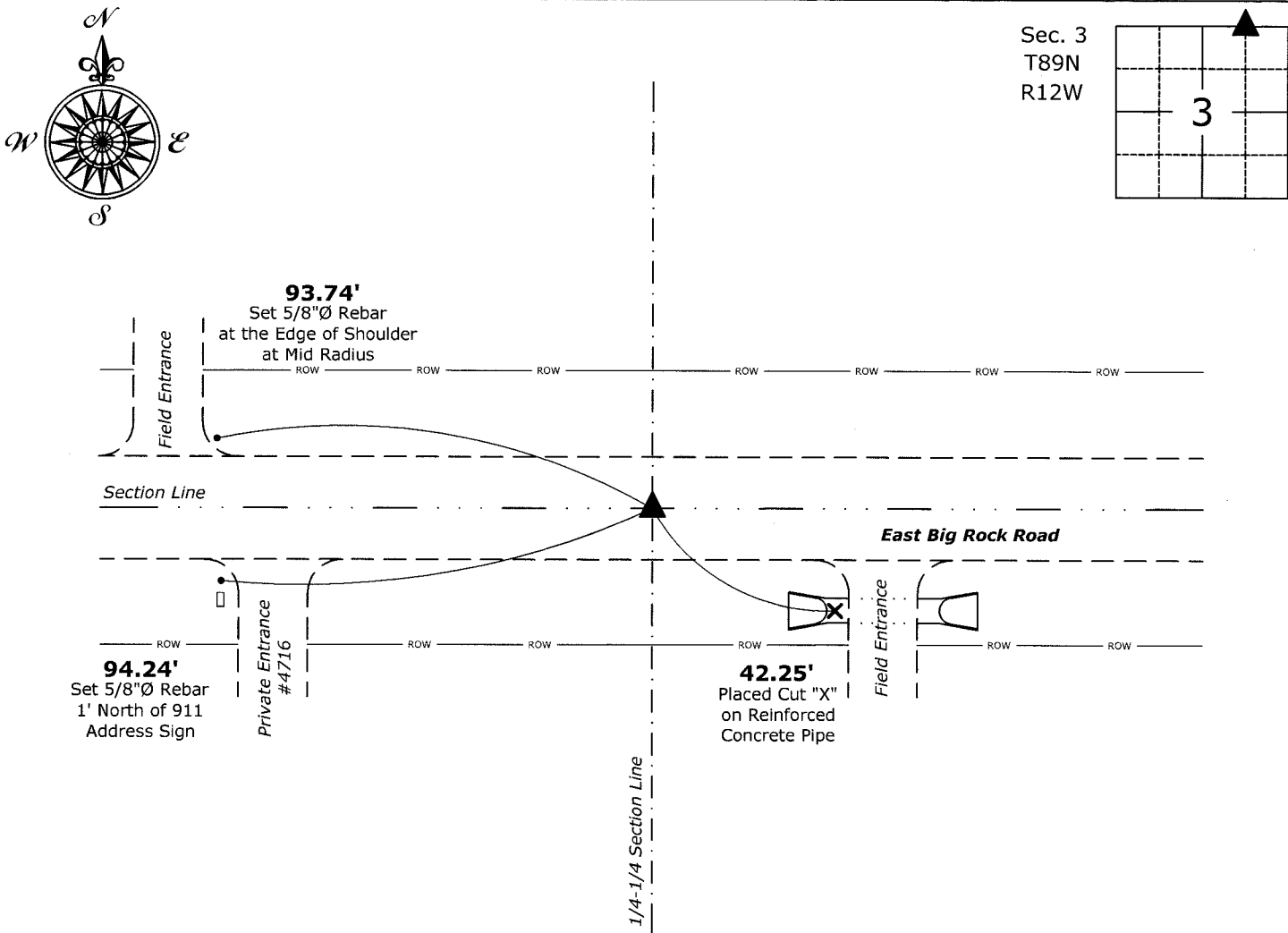
- ☒ There is no certificate on file for this corner.
☐ There are no longer three valid ties of record.
☐ There are changes to reference ties of record.
☐ There is change of monumentation of record.
☐ To clarify description of record monument (ties).

Monument Description and Remarks:

Northeast Corner Fr'I NW 1/4 - Fr'I NE 1/4: Set 5/8"Ø Rebar w/2"Ø Aluminum Cap PLS 22468 equidistant and on line between the North 1/4 and Northeast Corners of said Section.

Plan View

(Show a minimum of three reference ties to durable physical objects, relevant monuments and physical conditions that will enable recovery of the corner.)



Northeast Corner Fr'I NW 1/4 - Fr'I NE 1/4 of Section 3-89-12
Set 5/8"Ø Rebar w/2"Ø Aluminum Cap PLS 22468



I hereby certify that this land surveying document was prepared and the related survey work was performed by me or under my direct personal supervision and that I am a duly licensed Land Surveyor under the laws of the State of Iowa.
Isaiah M. Reicks 2-17-22
Isaiah M. Reicks Date:
License number 22468
My license renewal date is December 31, 2023.
Sheets covered by this seal: Individual sheet only

List Corner to be Indexed			
Corner	Section	Twp.	Range
NE-NW-NE	3	89	12
Project Number: 2021-595			
FB: Black Hawk 1, Pgs. 30-32			