

HELLAND ENGINEERING & SURVEYING, LTD. 1107 TECHNOLOGY PKWY CEDAR FALLS IA 50613-6951

Paul H. Helland, 1107 Technology Parkway, Cedar Falls, Iowa 50613-6951, (319)-266-0161

UNITED STATES PUBLIC LAND SURVEY CORNER CERTIFICATE  
OF

LAND SURVEY MONUMENTS SITUATED IN SECTION NO. 3, TOWNSHIP NO. 89 NORTH, RANGE NO. 12 WEST OF THE FIFTH PRINCIPAL MERIDIAN, BLACK HAWK COUNTY, IOWA.  
PREVIOUSLY RECORDED IN BOOK, PAGE.

(SHOW REASON FOR PREPARING THIS CERTIFICATE, THE EVIDENCE AND DETAILED PROCEDURES USED IN ESTABLISHING THE CORNER POSITIONS AND MONUMENTATION FOUND OR PLACED.)

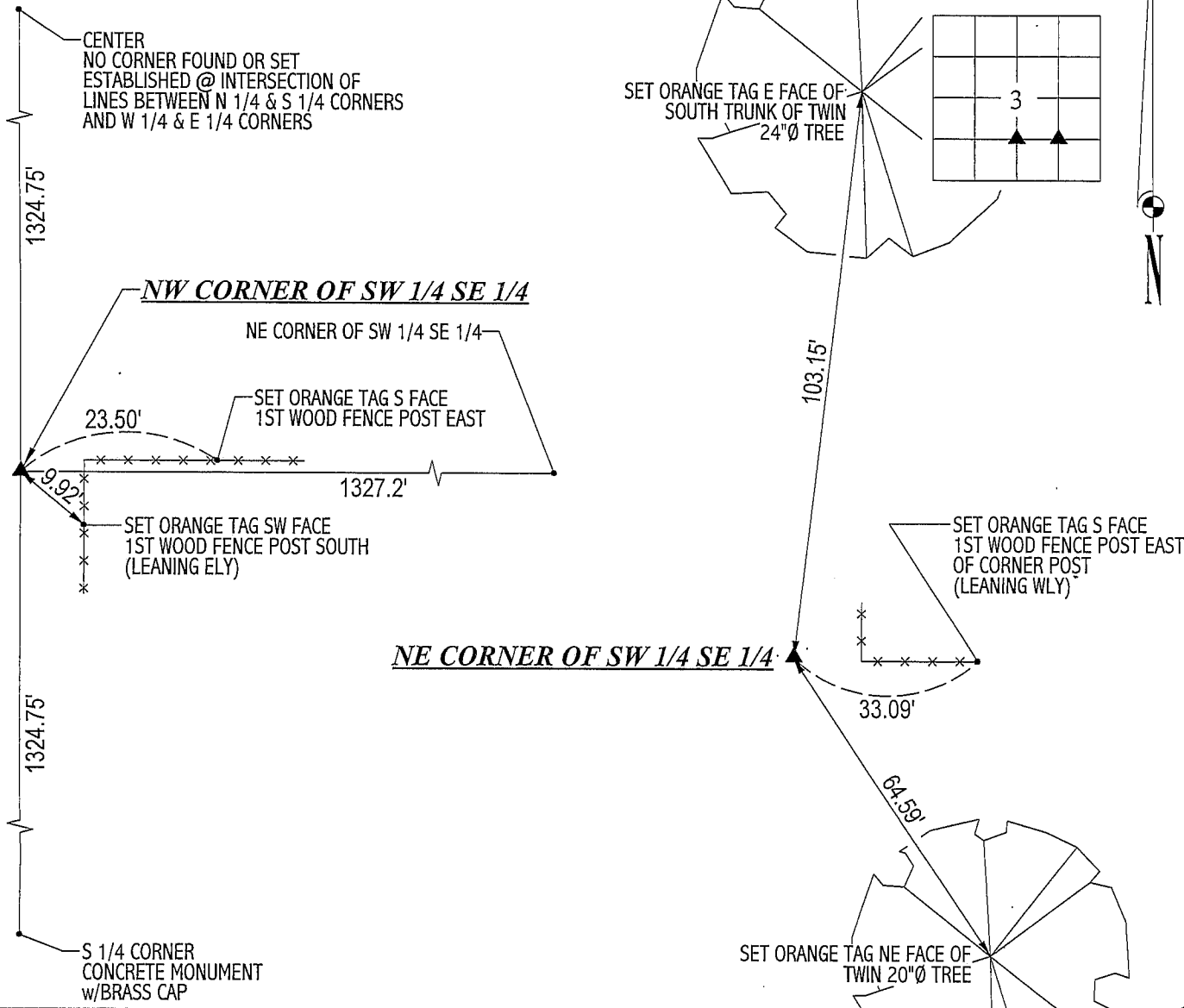
MONUMENT DESCRIPTION AND REMARKS:

NO CORNER CERTIFICATES ON FILE. SURVEY DONE IN S 1/2 SE 1/4 OF SEC. 3-T89N-R12W.

- NW CORNER OF SW 1/4 SE 1/4: SET NO. 4 REBAR w/ORANGE CAP #6505 @ MIDPOINT OF WEST LINE OF SE 1/4 OF SEC. 3-T89N-R12W. CORNER FALLS IN CULTIVATED FIELD, BURIED 12". CORNER POST IS 1.4' NORTH & 7.6' EAST.
- NE CORNER OF SW 1/4 SE 1/4: SET NO. 4 REBAR w/ORANGE CAP #6505 @ CENTER OF SE 1/4 OF SEC. 3-T89N-R12W. CORNER IS 66'± EAST OF THE CENTERLINE OF ELK RUN CREEK. REMNANTS OF CORNER POST IS 0.6' SOUTH & 12.2' EAST.

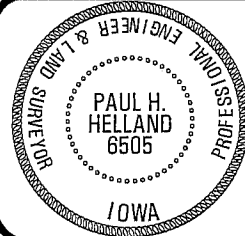
PLAN VIEW

(SHOW A MINIMUM OF THREE REFERENCE TIES TO DURABLE PHYSICAL OBJECTS, RELEVANT MONUMENTS AND PHYSICAL CONDITIONS THAT WILL ENABLE RECOVERY OF THE CORNER.)



HELLAND ENGINEERING & SURVEYING, LTD.  
1107 Technology Parkway  
Cedar Falls, Iowa 50613-6951  
(319)-266-0161

(00.00') - RECORDED AS FILE NAME: 03-171C3.DRG



I hereby certify that this land surveying document was prepared and the related survey work was performed by me or under my direct personal supervision and that I am a duly licensed Land Surveyor under the laws of the State of Iowa.  
*Paul H. Helland*  
Paul H. Helland  
License Number 6505  
My license renewal date is December 31, 2003.  
All pages or sheets are covered by this seal except:

LIST CORNERS TO BE INDEXED			
CORNER	SECTION	TOWNSHIP	RANGE
NW CORNER SW 1/4 SE 1/4	3	89N	12W
NE CORNER SW 1/4 SE 1/4	3	89N	12W