

Number: 202200016850  
Recorded: 2/21/2022 at 12:45:44.0 PM  
County Recording Fee: \$7.00  
Iowa E-Filing Fee: \$3.00  
Combined Fee: \$10.00  
Revenue Tax:  
Sandie L. Smith, RECORDER  
Black Hawk County, Iowa

Prepared by & Return to: Herold - Reicks Surveying, 2206 East Bremer Avenue, Waverly, IA 50677, Ph. 319-483-5187

United States Public Land Survey Corner Certificate

Land Survey Monument situated in  
Section 3, Township 89 North, Range 12 West of the Fifth Principal Meridian, **Black Hawk** County, Iowa.  
Not on file in the County Recorder's office.

This certificate is being prepared in compliance  
with Iowa Code Chapter 355.11 because:



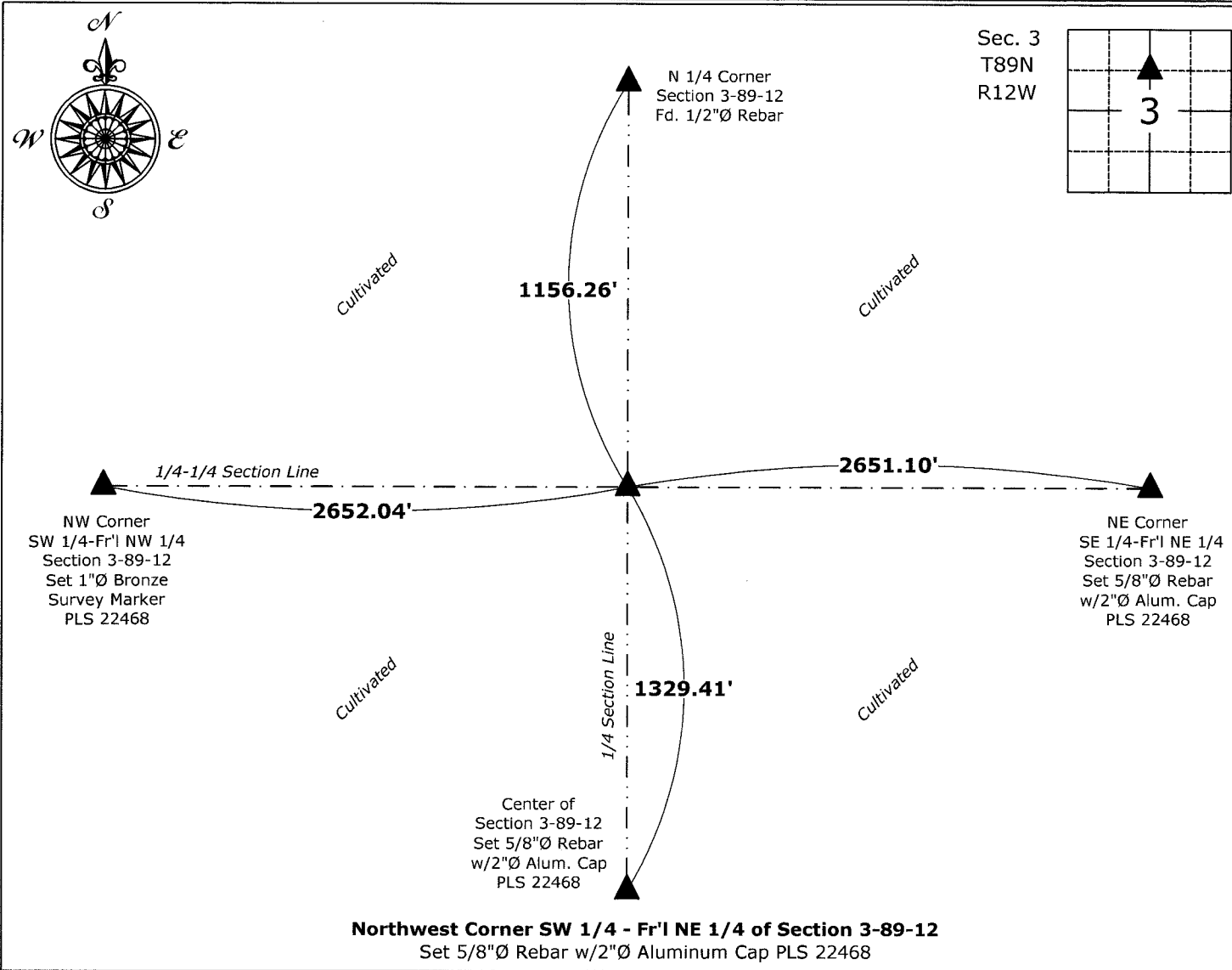
- ☒ There is no certificate on file for this corner.
- ☐ There are no longer three valid ties of record.
- ☐ There are changes to reference ties of record.
- ☐ There is change of monumentation of record.
- ☐ To clarify description of record monument (ties).

Monument Description and Remarks:

**Northwest Corner SW 1/4 - Fr'l NE 1/4:** Set 5/8"Ø Rebar w/2"Ø Aluminum Cap PLS 22468 on line between the North 1/4  
Corner and the Center of said Section at the proportionate record distance, as shown on the Original GLO Plat of said Township.

Plan View

(Show a minimum of three reference ties to durable physical objects, relevant monuments and physical conditions that will enable recovery of the corner.)



I hereby certify that this land surveying document  
was prepared and the related survey work was  
performed by me or under my direct personal  
supervision and that I am a duly licensed Land  
Surveyor under the laws of the State of Iowa.  
*Isaiah M. Reicks* 2-17-22  
Isaiah M. Reicks Date:  
License number 22468  
My license renewal date is December 31, 2023.  
Sheets covered by this seal: Individual sheet only

List Corner to be Indexed			
Corner	Section	Twp.	Range
NW-SW-NE	3	89	12
Project Number: 2021-595			
FB: Black Hawk 1, Pgs. 30-32			