

INDEX
MARGIN
PROOF
COMPARE

BLACK HAWK COUNTY IOWA:ss
Filed for record JULY 18, 2001 at
3:30 P. M. and recorded in Book _____
of _____ at page _____.

001645

Patricia A. Lass Recorder
FEE 1-5.00X
HELLAND ENGINEERING & SURVEYING LTD

Paul H. Helland, 1107 Technology Parkway, Cedar Falls, Iowa 50613-6951, (319)-266-0161

UNITED STATES PUBLIC LAND SURVEY CORNER CERTIFICATE OF

LAND SURVEY MONUMENTS SITUATED IN SECTION NO. 1, TOWNSHIP NO. 89 NORTH, RANGE
NO. 12 WEST OF THE FIFTH PRINCIPAL MERIDIAN, BLACK HAWK COUNTY, IOWA.
PREVIOUSLY RECORDED IN BOOK _____, PAGE _____.

(SHOW REASON FOR PREPARING THIS CERTIFICATE, THE EVIDENCE AND DETAILED PROCEDURES USED IN ESTABLISHING THE
CORNER POSITIONS AND MONUMENTATION FOUND OR PLACED.)

MONUMENT DESCRIPTION AND REMARKS:

SURVEY DONE IN SW 1/4 SW 1/4 OF SEC. 1-T89N-R12W.

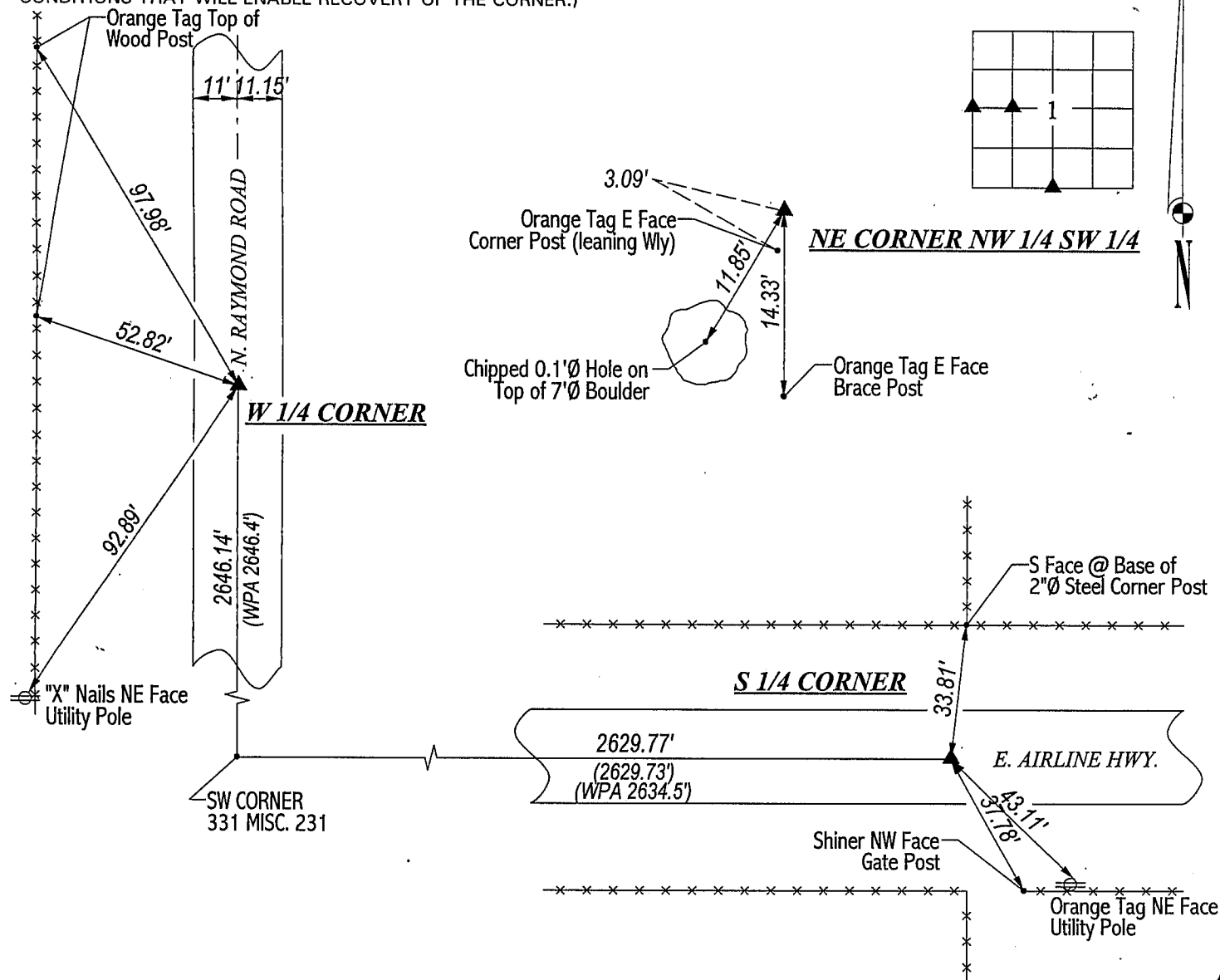
W 1/4 CORNER: Found No. 5 rebar in A.C.C. pavement per county reference ties.

S 1/4 CORNER: Harold Michels found concrete monument per 303 Misc. 263 on 9/29/1992. Found 1" pipe w/yellow cap #3862
3.1' long. Pulled pipe and probed beneath pipe, hit concrete monument 3.5' deep. Replace pipe in original position. WPA notes
dated 4/12/1938 states corner 2634.6' East of the SW corner, yet an erasure states 1/4 fence N & S to be at 2635'. Corner is
4' West of 1/4 fence N & S which would explain the shortage in distance between the SW corner and the S 1/4 corner.

NE CORNER OF NW 1/4 SW 1/4: Corner established 4/4/1915 per Surveyor's Record Bk 1 Pg 73 in the Auditor's office. Set No. 4
rebar in E-W fence line extensions in line w/evidence to the N & S. Distance from W 1/4 Corner fits proportion of South line of SW
1/4 per said Surveyor's Record Bk 1 Pg 73.

PLAN VIEW

(SHOW A MINIMUM OF THREE REFERENCE TIES TO DURABLE PHYSICAL OBJECTS, RELEVANT MONUMENTS AND PHYSICAL
CONDITIONS THAT WILL ENABLE RECOVERY OF THE CORNER.)



HELLAND ENGINEERING & SURVEYING, LTD.
1107 Technology Parkway
Cedar Falls, Iowa 50613-6951
(319)-266-0161

FILE NAME: 01-224CC.DRG



I hereby certify that this land surveying document was prepared
and the related survey work was performed by me or under my
direct personal supervision and that I am a duly licensed Land
Surveyor under the laws of the State of Iowa.

Paul H. Helland 5/25/01
Paul H. Helland
License Number 6505
My license renewal date is December 31, 2001.
All pages or sheets are covered by this seal except:

LIST CORNERS TO BE INDEXED

| CORNER | SECTION | TOWNSHIP | RANGE |
|---------------|---------|----------|-------|
| W 1/4 CORNER | 1 | 89N | 12W |
| S 1/4 CORNER | 1 | 89N | 12W |
| NE CORNER | 1 | 89N | 12W |
| NW 1/4 SW 1/4 | | | |