

Jeffrey P. Helland, 1107 Technology Parkway, Cedar Falls, Iowa 50613-6951, (319)-266-0161

UNITED STATES PUBLIC LAND SURVEY CORNER CERTIFICATE OF

LAND SURVEY MONUMENTS SITUATED IN SECTION NO. 36, TOWNSHIP NO. 89 NORTH, RANGE
NO. 11 WEST OF THE FIFTH PRINCIPAL MERIDIAN, BLACK HAWK COUNTY, IOWA.
PREVIOUSLY RECORDED IN BOOK 319, PAGE 824.

(SHOW REASON FOR PREPARING THIS CERTIFICATE, THE EVIDENCE AND DETAILED PROCEDURES USED IN ESTABLISHING THE
CORNER POSITIONS AND MONUMENTATION FOUND OR PLACED.)

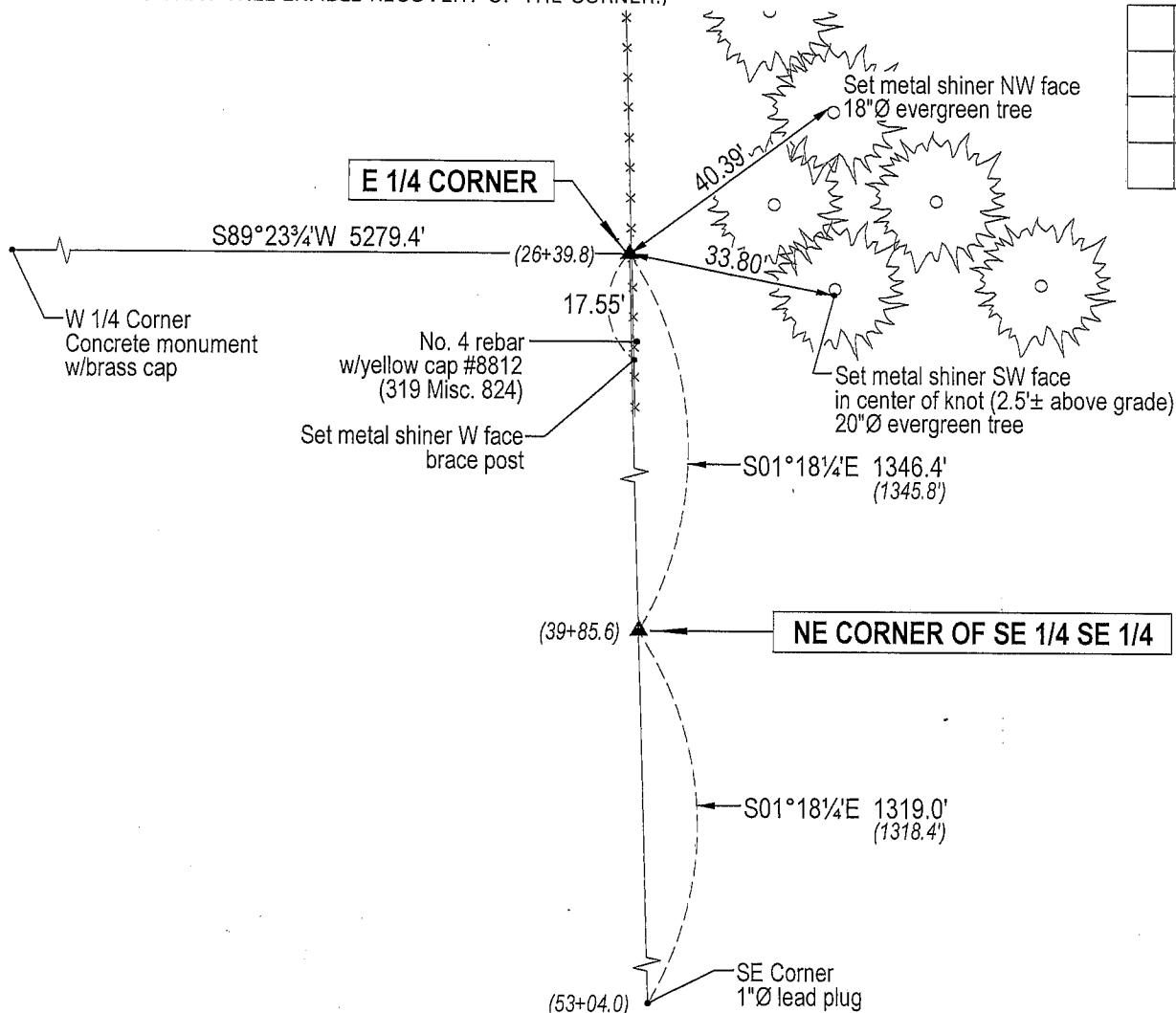
MONUMENT DESCRIPTION AND REMARKS:

319 Misc. 824 has the incorrect position of the E 1/4 Corner, no corner certificate on file for the NE Corner of SE 1/4 SE 1/4.
Survey completed in the SE 1/4 of Sec. 36-T89N-R11W.

- E 1/4 CORNER: 319 Misc. 824 calls for "Set 1/2" rebar w/cap, established by single proportionate measure from NE and SE corners." Black Hawk County Engineer reference ties calls for "concrete monument." Found concrete monument w/brass cap corresponding to WPA chaining notes dated 6/30/1939. Set No. 4 rebar on N side for magnetic detection. Top of monument is flush w/surface of ground. Found No. 4 rebar w/yellow plastic cap #8812 per 319 Misc. 824, 14.5' South and 1.2' East (based upon Geodetic North) from concrete monument.
- NE CORNER of SE 1/4 SE 1/4: No Black Hawk County Engineer reference ties exist. WPA chaining notes dated 6/30/1939 show 1/4 1/4 fence running West at Sta. 39+85.6. Found remnants of fence at that position. Set No. 4 rebar w/orange plastic cap #16264 in line w/remnants of fence and on straight line between the E 1/4 Corner and SE Corner. Corner falls on top of earthen berm with no germane reference ties.

PLAN VIEW

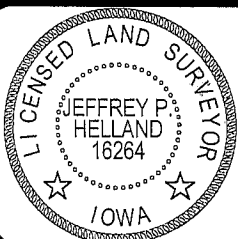
(SHOW A MINIMUM OF THREE REFERENCE TIES TO DURABLE PHYSICAL OBJECTS, RELEVANT MONUMENTS AND PHYSICAL
CONDITIONS THAT WILL ENABLE RECOVERY OF THE CORNER.)



HELLAND ENGINEERING & SURVEYING, LTD.
1107 Technology Parkway
Cedar Falls, Iowa 50613-6951
(319)-266-0161

(00.00') - Per WPA Chaining Notes
(Bearings based upon Geodetic North)

File Name: 04-363c2.drg



I hereby certify that this land surveying document was prepared
and the related survey work was performed by me or under my
direct personal supervision and that I am a duly licensed Land
Surveyor under the laws of the State of Iowa.

Jeffrey P. Helland 1/3/05
Jeffrey P. Helland
License Number 16264
My license renewal date is December 31, 2005.
All pages or sheets are covered by this seal except:

LIST CORNERS TO BE INDEXED

| CORNER | SECTION | TOWNSHIP | RANGE |
|----------------------------|---------|----------|-------|
| E 1/4 CORNER | 36 | 89N | 11W |
| NE CORNER SE 1/4 SE 1/4 | 36 | 89N | 11W |