

UNITED STATES PUBLIC LAND SURVEY CORNER CERTIFICATE

OF

Land Survey Monuments situated in Section 36, Township 89 N, Range 11 W, of the Fifth Principal Meridian, BLACK HAWK County, Iowa.
 Previously recorded in N/A in County Recorder's Office.
 (book, page, document number, etc.)

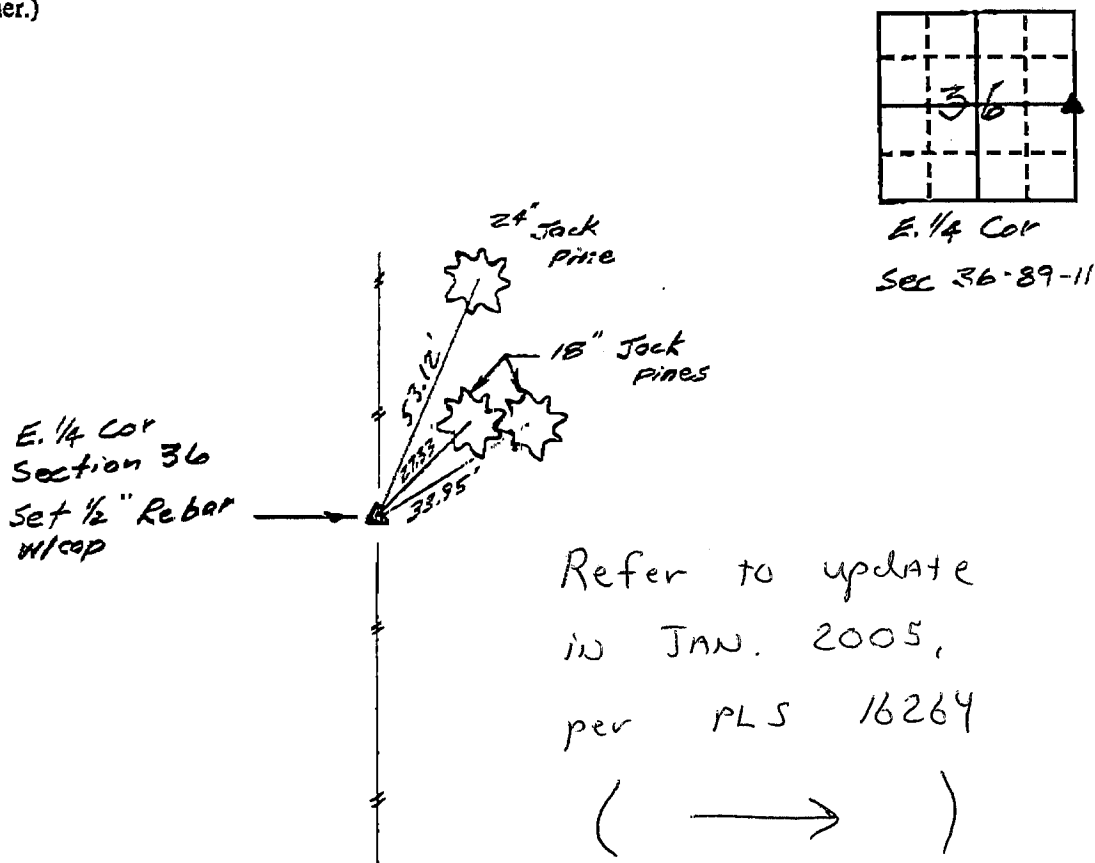
(Show reason for preparing this certificate, the evidence and detailed procedures used in establishing the corner positions and monumentation found or placed.)

Monument Description and Remarks: Certificate prepared because presently
a certificate for this corner is unfiled.

E. 1/4 Corner - set 1/2" Rebar w/ cap Corner position
establish by single proportionate measure from NE and SE corners.

PLAN - VIEW

(Show a minimum of three reference ties to durable physical objects, relevant monuments and physical conditions that will enable recovery of the corner.)



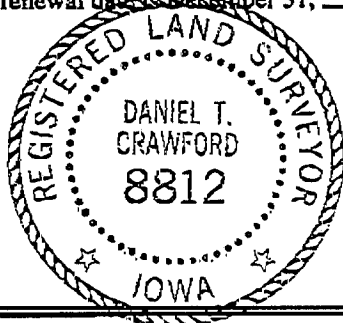
I hereby certify that the survey work was completed and this land surveying document was prepared by me or under my direct personal supervision and that I am a duly registered land surveyor under the laws of the state of Iowa

Signature: Daniel T. Crawford
 Name typed or printed: Daniel T. Crawford, R.L.S.

Date: 10/17/95 Reg. No. 8484

My registration renewal date is December 31, 1995

SEAL



Corners	List Corners to be Indexed Section	Twp	Range
E. 1/4	36	89 N	11 W

MISC. BK. 319 p. 824