

John R. Crawford, R.L.S.

Crawford Engineering & Surveying, Inc.

319/334-7077

SLSI 9-94

UNITED STATES PUBLIC LAND SURVEY CORNER CERTIFICATE

OF

Land Survey Monuments situated in Section 35, Township 89 N, Range 11 W, of the Fifth Principal Meridian, BLACK HAWK County, Iowa.
Previously recorded in _____ in County Recorder's Office.

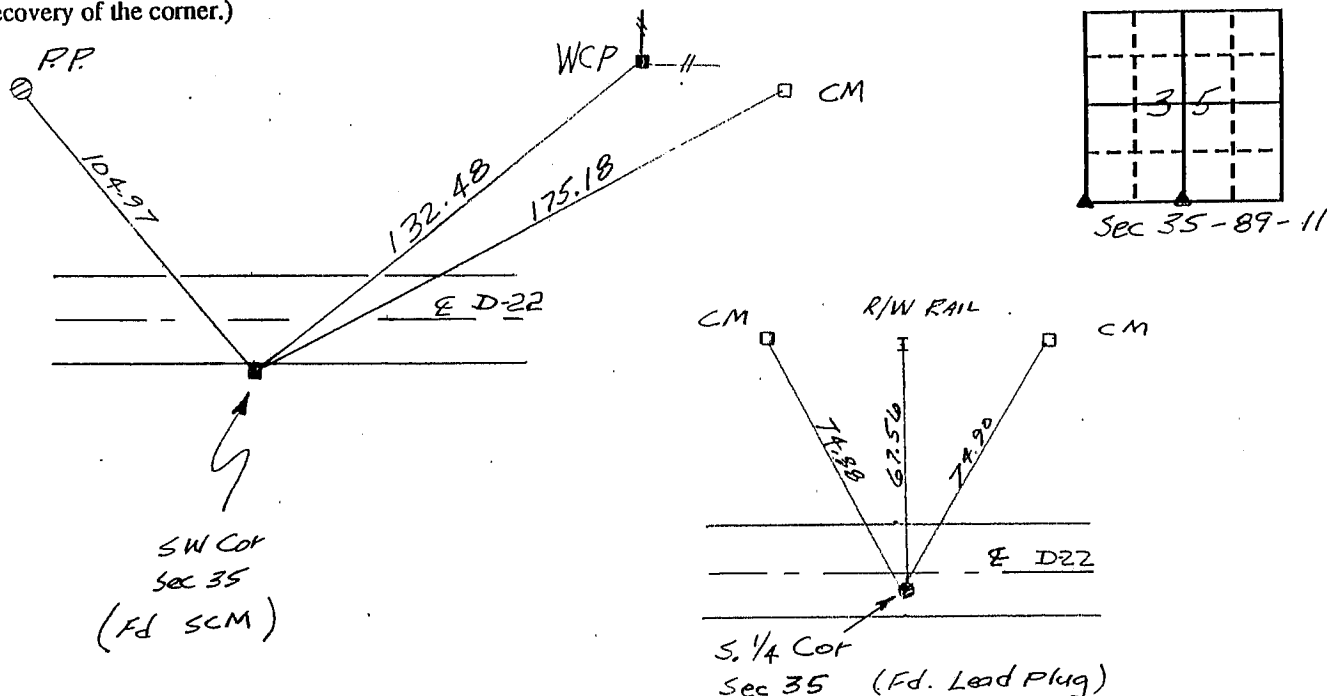
(Show reason for preparing this certificate, the evidence and detailed procedures used in establishing the corner positions and monumentation found or placed.)

Monument Description and Remarks: No certificates on file
SW Corner - Fd SCM w/ brass cap 1.8' below road

S. 1/4 Corner - Fd Lead Plug in P.C.C. 6" below ACC surface

PLAN - VIEW

(Show a minimum of three reference ties to durable physical objects, relevant monuments and physical conditions that will enable recovery of the corner.)



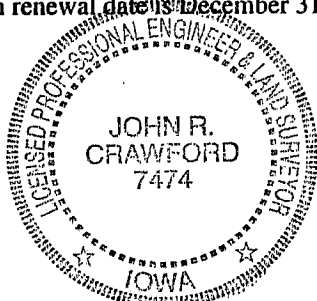
I hereby certify that the survey work was completed and this land surveying document was prepared by me or under my direct personal supervision and that I am a duly registered land surveyor under the laws of the state of Iowa

Signature: John R. Crawford
Name typed or printed: John R. Crawford R.L.S.

Date: 4/29/97 Reg. No. 7474

My registration renewal date is: December 31, 1997

SEAL



Corners	List Corners to be Indexed Section	Twp	Range
SW	35	89 N	11 W
S. 1/4	35	89 N	11 W

MISC. BK. 325 p. 261