

PREPARED BY: BLACK HAWK COUNTY ENGINEERS OFFICE
316 E. FIFTH STREET, ROOM 211 WATERLOO, IOWA 50703

PH.# (319) 833-3008
FAX.# (319) 833-3139
SLSI 9-94
BHCO 03-09

UNITED STATES PUBLIC LAND SURVEY CORNER CERTIFICATE OF
Land Survey Monuments situated in Section 35, Township 89 N,
Range 11 W, of the Fifth Principal Meridian, BLACK HAWK County, Iowa.
Previously recorded in MISC Book 295, Page 230, in County Recorder's Office.

(Show reason for preparing this certificate): The corner monument has been Replaced or Modified, per Ia. Code 355.11(1)(c)

(Evidence and detailed procedures used in establishing the corner position(s) and monumentation found or placed.)

Monument Description and Remarks: N.E. COR. CURRENT RECORD CALLS FOR "PK
NAIL IN ACC SURFACE, OVER FND. CHISLED "X" IN PCC PVM'T. AT 6" DEEP". FOUND
CHISLED "X" IN PCC PVM'T. @ ±5" DEEP OF ACC PVM'T. (± CURRENT ACC OVERLAY
DEPTH). MILLED 2" Dp. EXIST. ACC AND RESURACED 3" Dp. HMA PAVING. RECORD COUNTY
TIES CALL FOR "PLUG IN PAVING" DATED AUG. 1960, WITH "NO" GEOM. REF. TIES NOTED.
WPA RECORD NOTES STATE "PLUG ON C.L. PVM'T. HWY. #20 NOT FOUND", YET DENOTE
RECORD MEAS. TO LAND CORNERS E-W AS SHOWN. CORNER ACCEPTED DUE TO NATURE OF
THAT FOUND, AND EXIST. ACC PVM'T. MILLED 2" Dp. AND RESURFACED WITH HMA @ 3"
DEPTH. RESET 5" L. DURA™ SPIKE w/WASHER FLUSH WITH NEW ACC/HMA SURFACE, AND
LOCATED ±0.8' SOUTH OF NEW C.L. PAVING JOINT.

NOTE: ALL DISTANCES PLUMB/HORIZ.
(H.D.), "UNLESS DENOTED".

PLAN VIEW

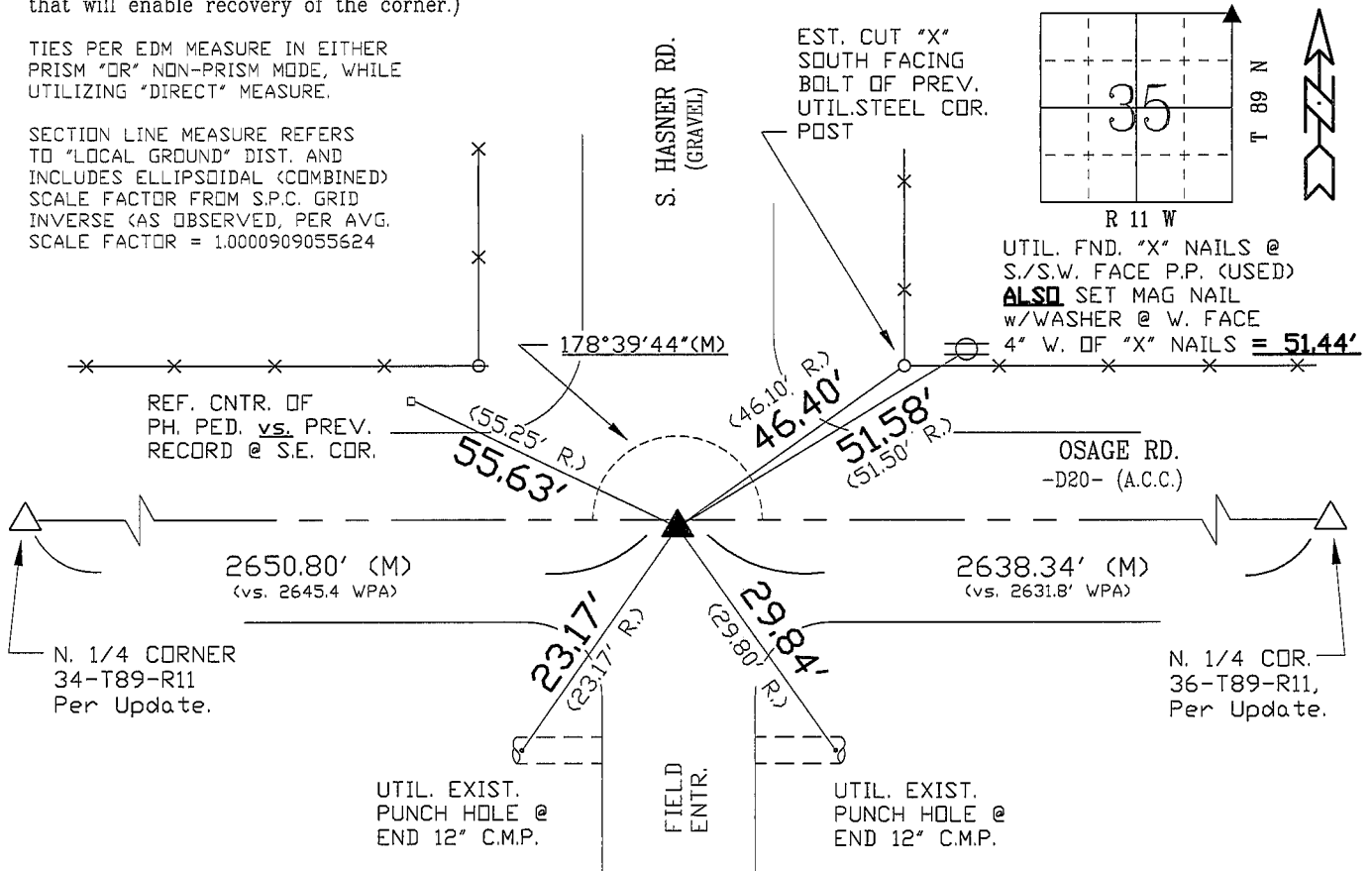
BHco Hist. Ties: BK. #1002 p.35 89-11

FIELD BOOK: Topcon 7i Std. Meas.

"NOT TO SCALE"

(Show a minimum of three reference ties to durable physical objects, relevant monuments and physical conditions
that will enable recovery of the corner.)

- 1.) TIES PER EDM MEASURE IN EITHER
PRISM "OR" NON-PRISM MODE, WHILE
UTILIZING "DIRECT" MEASURE.
- 2.) SECTION LINE MEASURE REFERS
TO "LOCAL GROUND" DIST. AND
INCLUDES ELLIPSOIDAL (COMBINED)
SCALE FACTOR FROM S.P.C. GRID
INVERSE (AS OBSERVED, PER AVG.
SCALE FACTOR = 1.0000909055624



S.P.C., Ia. N. Zone, USft

N=3642045.250'

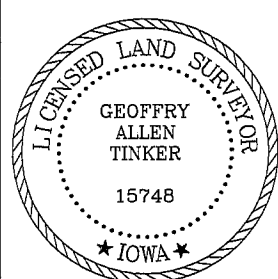
E=5298518.990'

(NAD83) "BHco1994 Net Adj.", RTK Obs.)

FIELD SURVEY: G.T./J.Z./D.B. 06/01/09

PREPARED BY: J.Z. & G.T. 9/9/09

CERTIFICATION



I hereby certify that this land surveying document
was prepared and the related survey work was
performed by me or under my direct personal
supervision and that I am a duly licensed Land
Surveyor under the laws of the State of Iowa.

Geoffrey Allen Tinker 09/09/09
Geoffrey Allen Tinker (date)

License Number 15748

My license renewal date is December 31, 2010

Pages or sheets covered by this seal:

This Land Corner Certificate Only.

LIST CORNERS TO BE INDEXED

Corner	Section -	Township -	Range
N.E. Cor.	35	89 N	11 W
N.W. Cor.	36	89 N	11 W
S.E. Cor.	26	89 N	11 W
S.W. Cor.	25	89 N	11 W

INDEX OF ABBREVIATIONS

(M) = "Measured" Dimension "NP" = Reflectorless EDM Meas.
(P) = "Platted" Dimension "MLM" = Indirect Measure
(R) = "Record" Dimension "CM" = Concrete Monument
(C) = "Calculated" Dimension "SM" = Survey Marker Spike/Tag
"IGS" = Iowa Geodetic Survey "PK" = PK/MAG Nail Brand Style
"WPA" = Works Progress Admin. Survey
"G" = per George Miller Survey (BHco Surveyor 1858-1860)
"J" = per John Ball Survey (BHco Surveyor 1868-1891)
"N" = per Nathan Barber Survey (BHco Surveyor 1908-1931)