

PREPARED BY: BLACK HAWK COUNTY ENGINEERS OFFICE
316 E. FIFTH STREET, ROOM 211 WATERLOO, IOWA 50703

PH.# (319) 833-3008
FAX.# (319) 833-3139
SLSI 9-94
CERT 03-09

UNITED STATES PUBLIC LAND SURVEY CORNER CERTIFICATE OF
Land Survey Monuments situated in Section 34, Township 89 N,
Range 11 W, of the Fifth Principal Meridian, BLACK HAWK County, Iowa.
Previously recorded in Misc. Book 325, Page 261, in County Recorder's Office.

(Show reason for preparing this certificate): The corner monument has been Replaced or Modified, per Ia. Code 355.11(1)(c)

(Evidence and detailed procedures used in establishing the corner position(s) and monumentation found or placed.)

Monument Description and Remarks: S.E. COR. CORNER RESET, AS RECORD CORNER
WAS FND. DESTROYED DURING 2008 SUBDRAIN PROJECT. CORNER RESET FROM GEOM. IN
PLAT PER MISC. 332 p.467, HOLDING RECORD DEFL. OF 0°01'30" AT N. 1/4 COR. SECT.
3-T88-R11 (VERIF. MEAS.=PLATTED DIST. OF 596.7' BETWEEN SAID N. 1/4 COR. & S. 1/4
COR. 35-T89-R11) FOR DIRECTION. SECONDLY, REF. WPA DIST. FROM N.E. COR. 04-88-11
AND REMAINING RECORD TIE (TO P.P. N.W. OF COR.). DIFF. BETWEEN RECORD DIR./DIST.
AND REF. TO SAID TIES = 0.12' (E.@0.06' & N.@0.11'). RECORD PLAT IN MISC. 328 p.228
ALSO REF., WITH FND. R/W COR.'S CALC.'ED CORNER ±0.6' N.E.'LY OF ABOVE, SO NOT USED.
SPLIT DIFFERENCE (NOTED), AND RESET #5 RBR. ±32L. w/ 2"Ø ALUM. CAP @ 0.80' SOUTH
OF S. EDGE ACC/HMA & ALIGNED WITH ± C.L. HOLGATE RD. TO NORTH.

NOTE: ALL DISTANCES PLUMB/HORIZ.
(H.D.), "UNLESS DENOTED".

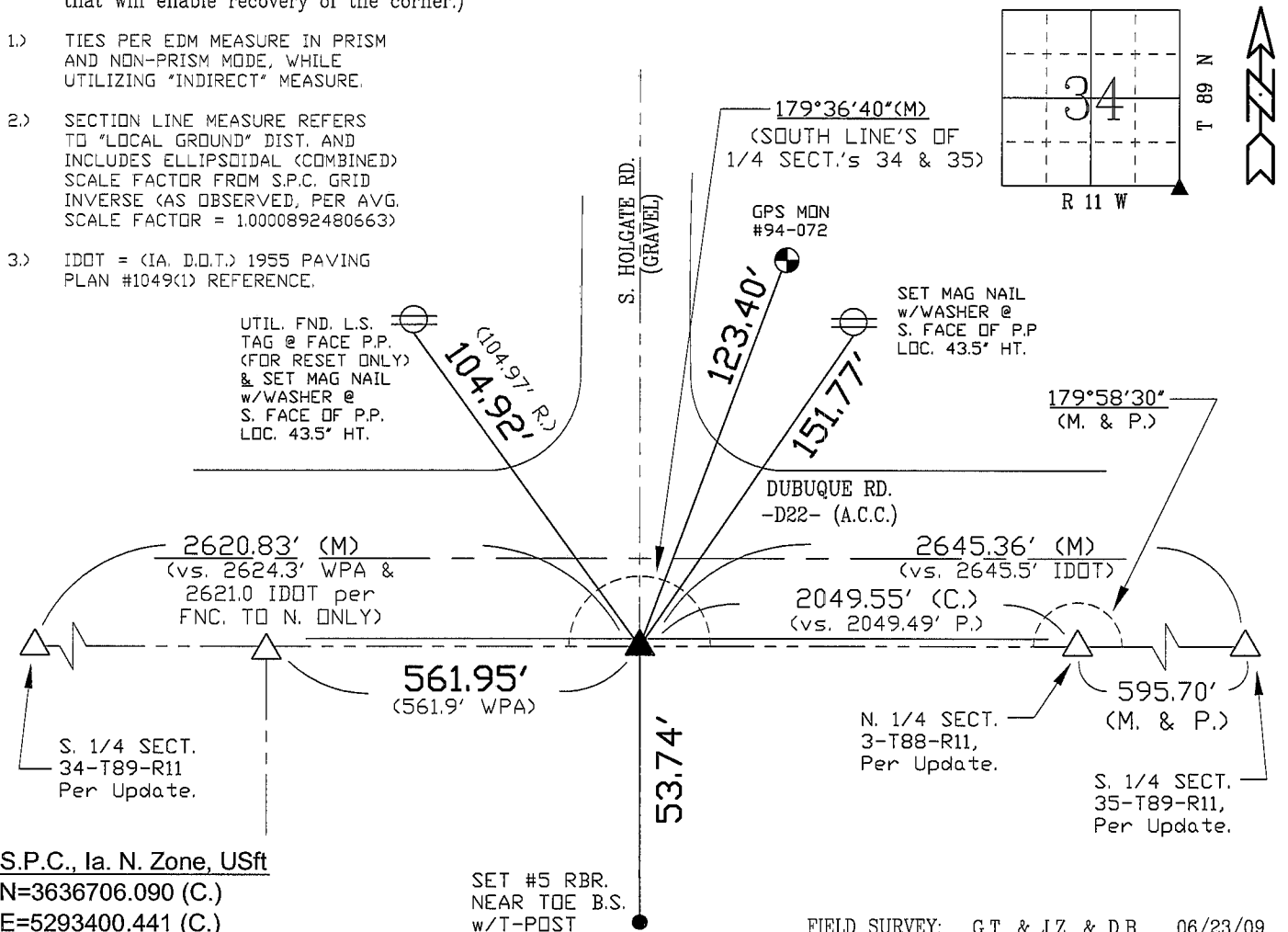
PLAN VIEW

"NOT TO SCALE"

BHco Hist. Ties: BK. #1002 p.34 89-11
FIELD BOOK: BHco. #488 p.47 (#1017)

(Show a minimum of three reference ties to durable physical objects, relevant monuments and physical conditions
that will enable recovery of the corner.)

- 1.) TIES PER EDM MEASURE IN PRISM
AND NON-PRISM MODE, WHILE
UTILIZING "INDIRECT" MEASURE.
- 2.) SECTION LINE MEASURE REFERS
TO "LOCAL GROUND" DIST. AND
INCLUDES ELLIPSOIDAL (COMBINED)
SCALE FACTOR FROM S.P.C. GRID
INVERSE (AS OBSERVED, PER AVG.
SCALE FACTOR = 1.0000892480663)
- 3.) IDOT = (IA. D.O.T.) 1955 PAVING
PLAN #1049(1) REFERENCE.



S.P.C., Ia. N. Zone, USft
N=3636706.090 (C.)
E=5293400.441 (C.)
(NAD83-2007 "BHco07", Calculated)

FIELD SURVEY: G.T. & J.Z. & D.B. 06/23/09
PREPARED BY: G.T. & J.Z. & D.B. 9/21/09

CERTIFICATION



I hereby certify that this land surveying document
was prepared and the related surveying work was
performed by me or under my direct personal
supervision and that I am a duly licensed Land
Surveyor under the laws of the State of Iowa.

Geoffry Allen Tinker 09/23/2009
Geoffry Allen Tinker (date)

License Number 15748

My license renewal date is December 31, 2010

Pages or sheets covered by this seal:
This Land Corner Certificate Only.

LIST CORNERS TO BE INDEXED

Corner	Section -	Township -	Range
S.E. Cor.	34	89 N	11 W
S.W. Cor.	35	89 N	11 W

INDEX OF ABBREVIATIONS

(M) = "Measured" Dimension
(P) = "Platted" Dimension
(R) = "Record" Dimension
(C) = "Calculated" Dimension
"IGS" = Iowa Geodetic Survey
"WPA" = Works Progress Admin. Survey
"G" = per George Miller Survey (BHco Surveyor 1858-1860)
"B" = per John Ball Survey (BHco Surveyor 1866-1891)
"N" = per Nathan Barber Survey (BHco Surveyor 1908-1931)

"NP" = Reflectorless EDM Meas.
"MLM" = Indirect Measure
"CM" = Concrete Monument
"SM" = Survey Marker Spike/Tag