

PREPARED BY: BLACK HAWK COUNTY ENGINEERS OFFICE
316 E. FIFTH STREET, ROOM 211 WATERLOO, IOWA 50703

PH.# (319) 833-3008
FAX# (319) 833-3139
SLSI 9-94
CERT 03-09

UNITED STATES PUBLIC LAND SURVEY CORNER CERTIFICATE OF
Land Survey Monuments situated in Section 34, Township 89 N,
Range 11 W, of the Fifth Principal Meridian, BLACK HAWK County, Iowa.
Previously recorded in Fee Book N/A, Page N/A, in County Recorder's Office.

(Show reason for preparing this certificate): The corner monument has been Replaced or Modified, per Ia. Code 355.11(1)(c)

(Evidence and detailed procedures used in establishing the corner position(s) and monumentation found or placed.)

Monument Description and Remarks: S. 1/4 COR. FOUND 2 1/2" Ø I&DOT ALUM. CAP IN
ACC CORE HOLE, WITH NO CURRENT CERTIFICATE ON RECORD. CLEANED CORE HOLE DOWN
±5" Dp. (AREA RECONSTRUCTED, WITH NO PCC BASE PAVEMENT). NO MAGNETIC SOUNDING OR
ADDITIONAL MONUMENTATION FOUND. TEMP. SET 5" L. DURA™ SPIKE THRU EXIST. ACC PVM'T.
LDC. 4" Dp. BELOW EXIST. ACC PVM'T. AT FND. I&DOT ALUM. CAP LOCATION, AND TEMP. REF.
w/RTK GPS (TWO LINE w/WT. AVG.), THEN MILLED 2" EXIST. ACC PAVEMENT & ADDED 5"
H.M.A./A.C.C. OVERLAY. CORNER RESET WITH #5 (5/8") x ±7" L. REBAR PER RTK GPS REF.,
AND RETIED. LAND CORNER IS LOC. ± ON NEW C.L. PAVING JOINT. I&DOT 1955 PAVING
PLAN DO NOT DETAIL CORNER, EXCEPT FOR FENCE TO NORTH AS 1/4 SECTION LINE, WHILE
EXISTING CO. TIES REFER TO PREV. "WOOD BRIDGE" AT LOCATION.

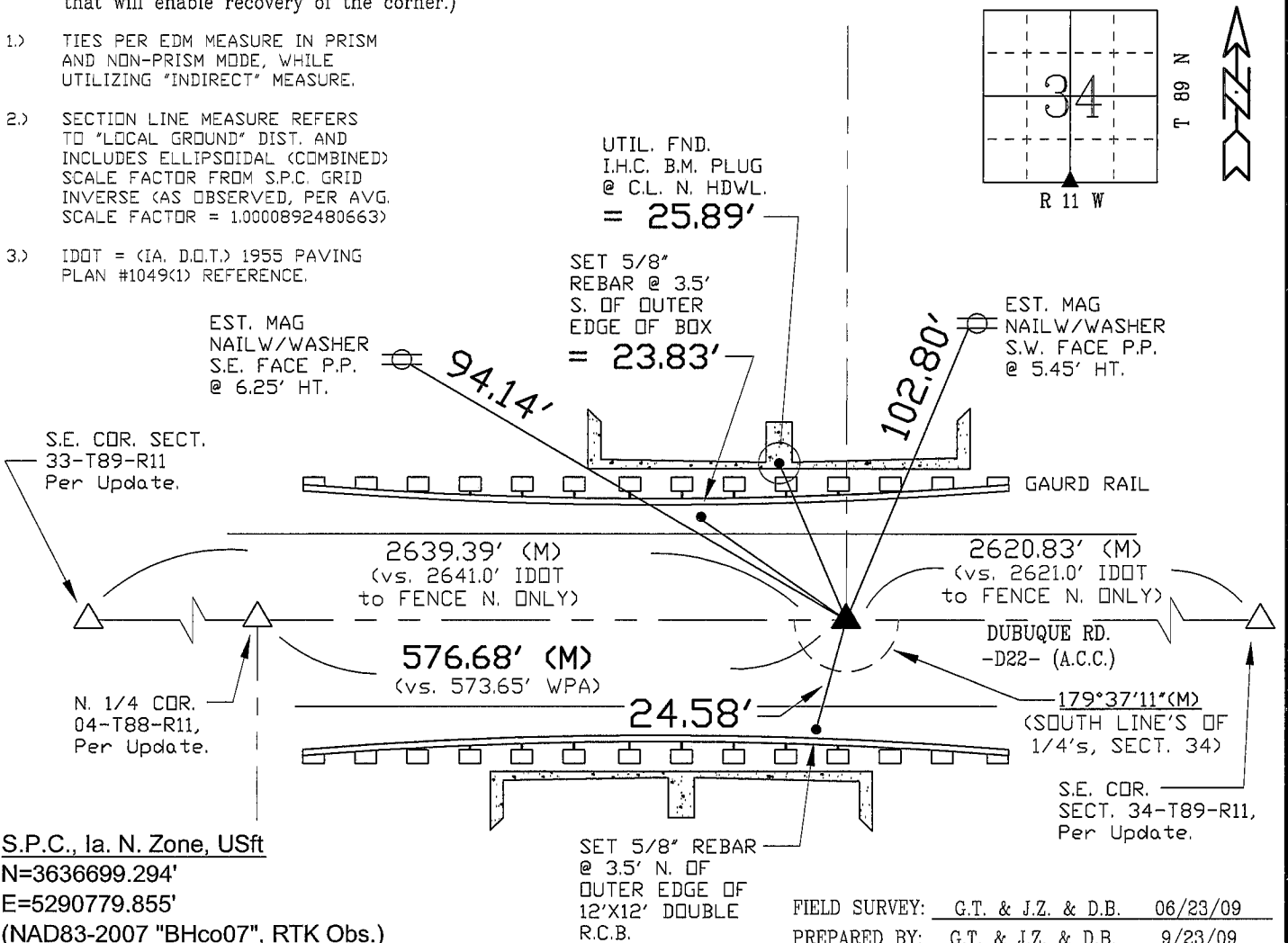
NOTE: ALL DISTANCES PLUMB/HORIZ.
(H.D.), "UNLESS DENOTED".

PLAN VIEW

BHco Hist. Ties: BK. #1002 p.34 89-11
FIELD BOOK: BHco. #488 p.46 (#1015)

(Show a minimum of three reference ties to durable physical objects, relevant monuments and physical conditions
that will enable recovery of the corner.)

- 1.) TIES PER EDM MEASURE IN PRISM
AND NON-PRISM MODE, WHILE
UTILIZING "INDIRECT" MEASURE.
- 2.) SECTION LINE MEASURE REFERS
TO "LOCAL GROUND" DIST. AND
INCLUDES ELLIPSOIDAL (COMBINED)
SCALE FACTOR FROM S.P.C. GRID
INVERSE (AS OBSERVED, PER AVG.
SCALE FACTOR = 1.0000892480663)
- 3.) IDOT = (IA. D.O.T.) 1955 PAVING
PLAN #1049(1) REFERENCE.



CERTIFICATION

I hereby certify that this land surveying document
was prepared and the related survey work was
performed by me or under my direct personal
supervision and that I am a duly licensed Land
Surveyor under the laws of the State of Iowa.

Geoffrey Allen Tinker 09/23/2009
Geoffrey Allen Tinker (date)

License Number 15748

My license renewal date is December 31, 2010

Pages or sheets covered by this seal:
This Land Corner Certificate Only.

LIST CORNERS TO BE INDEXED

Corner	Section -	Township -	Range
S. 1/4 Cor.	34	89 N	11 W

INDEX OF ABBREVIATIONS

(M) = "Measured" Dimension "NP" = Reflectorless EDM Meas.
(P) = "Platted" Dimension "MLM" = Indirect Measure
(R) = "Record" Dimension "CM" = Concrete Monument
(C) = "Calculated" Dimension "SM" = Survey Marker Spike/Tag
"IGS" = Iowa Geodetic Survey
"WPA" = Works Progress Admin. Survey
"G" = per George Miller Survey (BHco Surveyor 1858-1860)
"B" = per John Ball Survey (BHco Surveyor 1866-1891)
"N" = per Nathan Barber Survey (BHco Surveyor 1908-1931)