

REC FEE \_\_\_\_\_  
E FEE \_\_\_\_\_  
TRAN FEE \_\_\_\_\_  
REV FEE \_\_\_\_\_  
GF \_\_\_\_\_

Doc ID: 005628770001 Type: GEN  
Recorded: 12/01/2014 at 10:21:02 AM  
Fee Amt: \$7.00 Page 1 of 1  
Black Hawk County Iowa  
JUDITH A MCCARTHY RECORDER  
File **2015-00009060**

DANIEL T. CRAWFORD, P.E. & L.S. *ENV* Crawford Engineering & Surveying, Inc., Independence, Iowa 319/334-7077

UNITED STATES PUBLIC LAND SURVEY CORNER CERTIFICATE  
OF

Land Survey Monuments situated in Section 34, Township 89 N, Range 11 W, of the Fifth Principal Meridian, Black Hawk County, Iowa.

Previously recorded in N/A in County Recorder's Office.

Monument Description and Remarks:

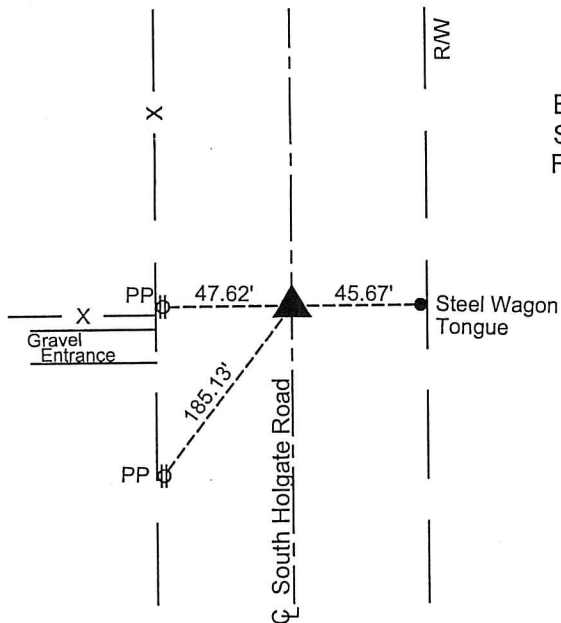
Reason for preparing certificate: Current certificate for East 1/4 Corner is not on file.

Evidence and detailed procedure used to establish corner position: Corner position previously established

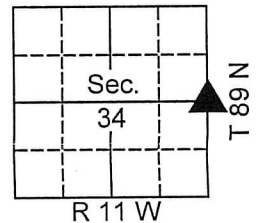
Monumentation found or placed: Found 1/2" square twisted rebar, 5" below road surface

PLAN-VIEW

(Show a minimum of three reference ties to durable physical objects, relevant monuments and physical conditions that will enable recovery of the corner).



East 1/4 Corner  
Section 34-89-11  
Found 1/2" square twisted  
rebar 5" below road surface



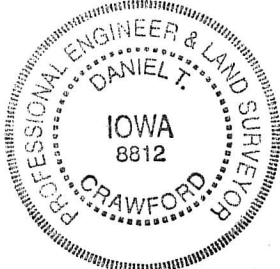
I hereby certify that the survey work was completed and this land surveying document was prepared by me or under my direct personal supervision and that I am a duly licensed land surveyor under the laws of the State of Iowa.

Signature: *Daniel T. Crawford*  
DANIEL T. CRAWFORD, P.E. & L.S.

Date: 10-30-14 Reg. No. 8812

My license renewal date is December 31, 2015

SEAL



Corners	List Corners to be Indexed		
	Section	Twp.	Range
East 1/4 Corner	34	89 N	11 W