

Number: 202300009079  
Recorded: 12/14/2022 at 3:31:23.0 PM  
County Recording Fee: \$7.00  
Iowa E-Filing Fee: \$3.00  
Combined Fee: \$10.00  
Revenue Tax:  
Sandie L. Smith, RECORDER  
Black Hawk County, Iowa

Prepared by & Return to: Isaiah M. Reicks, 2206 East Bremer Avenue, Waverly, IA 50677, Ph. 319-483-5187

United States Public Land Survey Corner Certificate

Land Survey Monument situated in  
Section 34, Township 89 North, Range 11 West of the Fifth Principal Meridian, Black Hawk County, Iowa.  
Not on file in the County Recorder's Office.

This certificate is being prepared in compliance with Iowa Code Chapter 355.11 because:



- ☒ There is no certificate on file for this corner.
- ☐ There are no longer three valid ties of record.
- ☐ There are changes to reference ties of record.
- ☐ There is change of monumentation of record.
- ☐ To clarify description of record monument (ties).

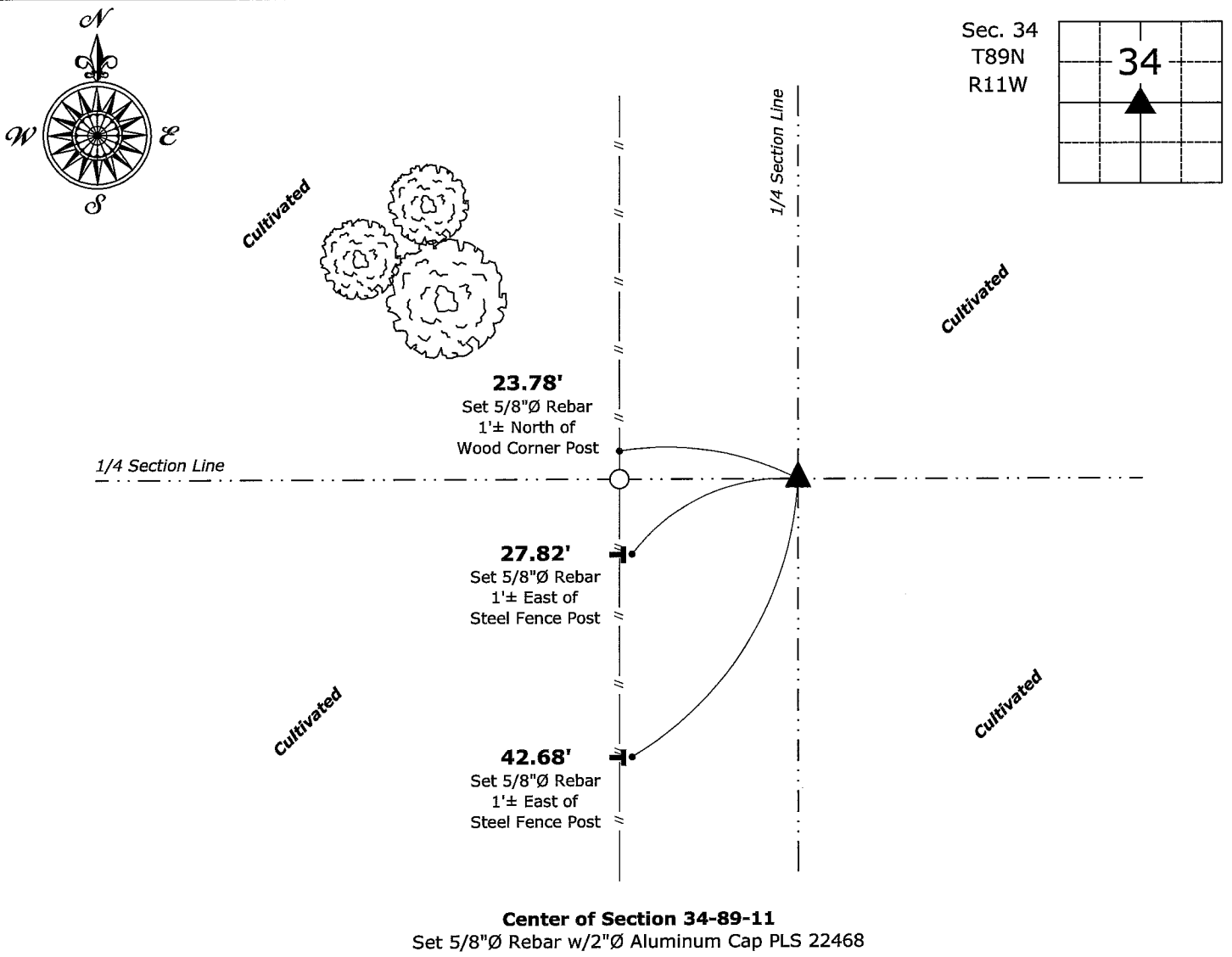
Monument Description and Remarks:

Center of Section: Set 5/8"Ø Rebar w/2"Ø Aluminum Cap PLS 22468 at the intersection of 1/4 Section Lines.

An extensive search of all of the records within the County offices was performed as part of the section corner recovery. There were no records located of the perpetuation of a monument at this corner.

Plan View

(Show a minimum of three reference ties to durable physical objects, relevant monuments and physical conditions that will enable recovery of the corner.)



I hereby certify that this land surveying document was prepared and the related survey work was performed by me or under my direct personal supervision and that I am a duly licensed Land Surveyor under the laws of the State of Iowa.

Isaiah M. Reicks  
Isaiah M. Reicks Date:

License number 22468  
My license renewal date is December 31, 2023.  
Sheets covered by this seal: Individual sheet only

List Corner to be Indexed

Corner	Section	Twp.	Range
CTR	34	89	11

Project Number: 2022-575

FB: Black Hawk 10, Pgs. 75-76, 78