

PREPARED BY: BLACK HAWK COUNTY ENGINEERS OFFICE
316 E. FIFTH STREET, ROOM 211 WATERLOO, IOWA 50703

PH.# (319) 833-3008
FAX.# (319) 833-3139
SLSI 9-94
CERT 03-09

UNITED STATES PUBLIC LAND SURVEY CORNER CERTIFICATE OF
Land Survey Monuments situated in Section 33, Township 89 N,
Range 11 W, of the Fifth Principal Meridian, BLACK HAWK County, Iowa.
Previously recorded in Fee Book N/A, Page N/A, in County Recorder's Office.

(Show reason for preparing this certificate): The corner monument has been Replaced or Modified, per Ia. Code 355.11(1)(c)

(Evidence and detailed procedures used in establishing the corner position(s) and monumentation found or placed.)

Monument Description and Remarks: S.E. COR. FOUND EXISTING ACC CORE HOLE,
WITH NO CURRENT MONUMENTATION, NOR CERTIFICATE ON RECORD. CLEANED CORE HOLE
DOWN ±5" Dp. THRU EXIST. ACC OVERLAY TO PCC PAVEMENT, AND FOUND LEAD PLUG IN
PCC PAVEMENT. TEMP. REF. w/RTK GPS (TWO LINE w/WT. AVG.), AND MILLED 2" EXIST.
ACC OVERLAY & ADDED 5" H.M.A./A.C.C. OVERLAY. CORNER RESET WITH #5 (5/8") x ±7" L.
REBAR PER RTK GPS REF. AND RETIED. LAND CORNER IS LOC. @ 4.6' SOUTH OF NEW C.L.
PAVING JOINT & ALIGNED w/± C.L. S.R. NORTH.

NOTE: ALL DISTANCES PLUMB/HORIZ.
(H.D.), "UNLESS DENOTED".

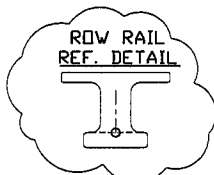
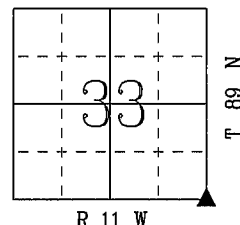
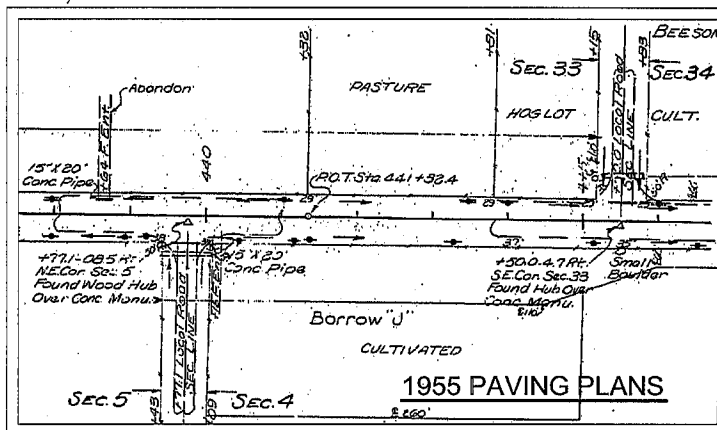
PLAN VIEW

BHco Hist. Ties: BK. #1002 p.33 89-11

FIELD BOOK: BHco. #488 p.46 (#1013)

(Show a minimum of three reference ties to durable physical objects, relevant monuments and physical conditions that will enable recovery of the corner.)

- 1.) TIES PER EDM MEASURE IN PRISM AND NON-PRISM MODE, WHILE UTILIZING "INDIRECT" MEASURE.
- 2.) SECTION LINE MEASURE REFERS TO "LOCAL GROUND" DIST. AND INCLUDES ELLIPSOIDAL (COMBINED) SCALE FACTOR FROM S.P.C. GRID INVERSE (AS OBSERVED, PER AVG. SCALE FACTOR = 1.0000892480663)
- 3.) IDOT = (IA. D.O.T.) 1955 PAVING PLAN #1049(1) REFERENCE.



UTIL. FND. I.D.O.T.
R/W RAIL, PER
REF. DETAIL.

EST. MAG
NAIL/WASHER
E. FACE OF
P.P. @ 64" HT.

EST. CUT "X"
@ EA. END. TOP
OF 30"Ø R.C.P.

SET MAG NAIL
w/ WASHER S.
FACE P.P.

S. 1/4 COR.
33-T89-R11
Per Update.

DUBUQUE RD.
-D22- (A.C.C.)

C.L. RD.
G.E.D.M.

N.E. COR.
05-T88-R11
Per Update.

S. 1/4 COR.
34-T89-R11,
Per Update.

S.P.C., Ia. N. Zone, USft

N=3636674.933'

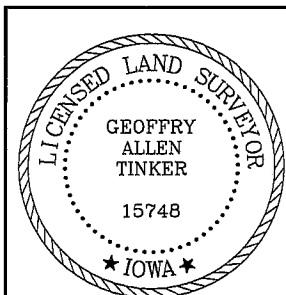
E=5288140.818'

(NAD83-2007 "BHco07", RTK Obs.)

FIELD SURVEY: G.T. & J.Z. & D.B. 06/23/09

PREPARED BY: G.T. & J.Z. & D.B. 9/17/09

CERTIFICATION



I hereby certify that this land surveying document was prepared and the related survey work was performed by me or under my direct personal supervision and that I am a duly licensed Land Surveyor under the laws of the State of Iowa.

Geoffrey Allen Tinker 09/23/2009
Geoffrey Allen Tinker (date)

License Number 15748

My license renewal date is December 31, 2010

Pages or sheets covered by this seal:

This Land Corner Certificate Only.

LIST CORNERS TO BE INDEXED

Corner	Section	Township	Range
S.E. Cor.	33	89 N	11 W
S.W. Cor.	34	89 N	11 W

INDEX OF ABBREVIATIONS

(M) = "Measured" Dimension
(P) = "Platted" Dimension
(R) = "Record" Dimension
(C) = "Calculated" Dimension
(G) = "Geometric" Dimension
(WPA) = "Works Progress Admin. Survey"
"φ" = per George Miller Survey (BHco Surveyor 1858-1860)
"B" = per John Ball Survey (BHco Surveyor 1866-1891)
"N" = per Nathan Barber Survey (BHco Surveyor 1908-1931)
"NP" = Reflectorless EDM Meas.
"MLM" = Indirect Measure
"CM" = Concrete Monument
"SM" = Survey Marker Spike/Tag