

WAYNE CLAASSEN ENGINEERING AND SURVEYING, INC.  
P.O. BOX 898 WATERLOO, IOWA 50704-0898

PHONE: (VOICE) 319-235-6294  
(FAX) 319-235-0028

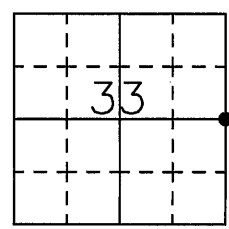
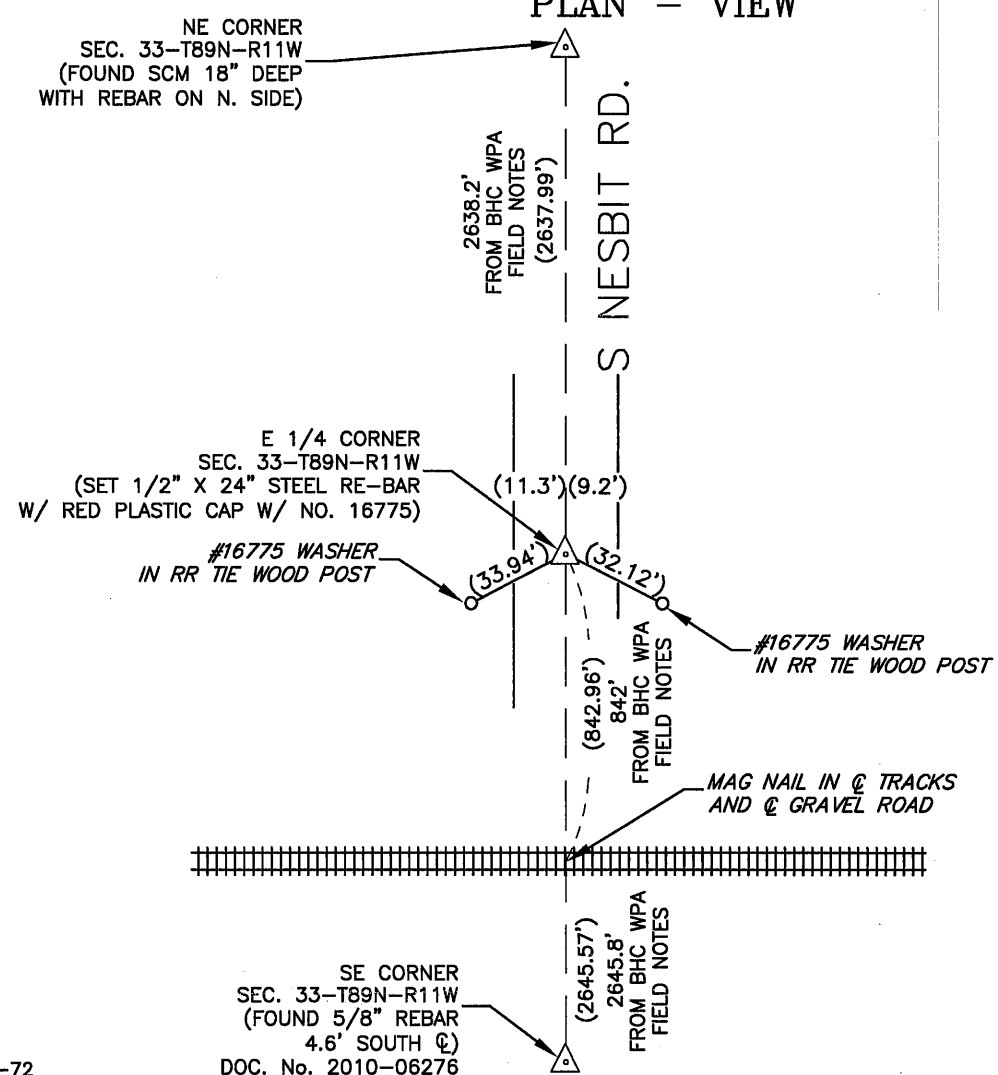
UNITED STATES PUBLIC LAND SURVEY CORNER CERTIFICATE

Land Survey Monuments situated in Section 33, Township 89 North, Range 11 West, of the Fifth Principal Meridian, Black Hawk County, Iowa.  
Previously recorded in \_\_\_\_\_ in County Recorder's Office.  
(book, page, document number, etc.)

Monument Description and Remarks

From WPA notes found in Black Hawk County Engineer's Office: "Found limestone 12"x7"x3", Old Oak Hub very rotten 2"x2"x18" iron pipe 1/2"x24 1/2" long. pipe was driven in center of oak hub. lowered evidence and set c.m. on top 12:" deep." Searched 10" radius area between rr ties and did not find cm. Therefore, set 1/2" X 24" steel re-bar with red plastic cap #16775 using measurements from above wpa notes and split of the 2 rr ties.. This certificate was filed because there is no certificate on file.

PLAN - VIEW



BK 669-72

DOC. No. 2010-06276

I hereby certify that this land surveying document was prepared and the related survey work was performed by me or under my direct personal supervision and that I am a duly Licensed Land Surveyor under the laws of the State of Iowa.

Signature: David L. Schell  
David L. Schell, L.S.  
Date: June 19, 2012 Lic. No. 16775

Pages or Sheets Covered by this Seal: THIS SHEET ONLY.

My license renewal date is December 31, 2012

SEAL

List Corners to be Indexed

Corners	Section	Twp	Range
E 1/4 CORNER,	33	89 N	11 W
W 1/4 CORNER,	34	89 N	11 W

