

SL
MISC
INDEX VS
MARGIN
PROOF
COMPARE

023055

BLACK HAWK COUNTY IOWA:ss
Filed for record MAY 8, 2000 at
12:30 PM. and recorded in Book 338
of MISC at page 226.

Paul H. Helland Recorder
FEE 1-5.00/
PAUL HELLAND

Paul H. Helland, 1107 Technology Parkway, Cedar Falls, Iowa 50613-6951, (319)-266-0161

UNITED STATES PUBLIC LAND SURVEY CORNER CERTIFICATE OF

LAND SURVEY MONUMENTS SITUATED IN SECTION NO. 33, TOWNSHIP NO. 89 NORTH, RANGE
NO. 11 WEST OF THE FIFTH PRINCIPAL MERIDIAN, BLACK HAWK COUNTY, IOWA.

PREVIOUSLY RECORDED IN BOOK 335, PAGE 183.

(SHOW REASON FOR PREPARING THIS CERTIFICATE, THE EVIDENCE AND DETAILED PROCEDURES USED IN ESTABLISHING THE
CORNER POSITIONS AND MONUMENTATION FOUND OR PLACED.)

MONUMENT DESCRIPTION AND REMARKS:

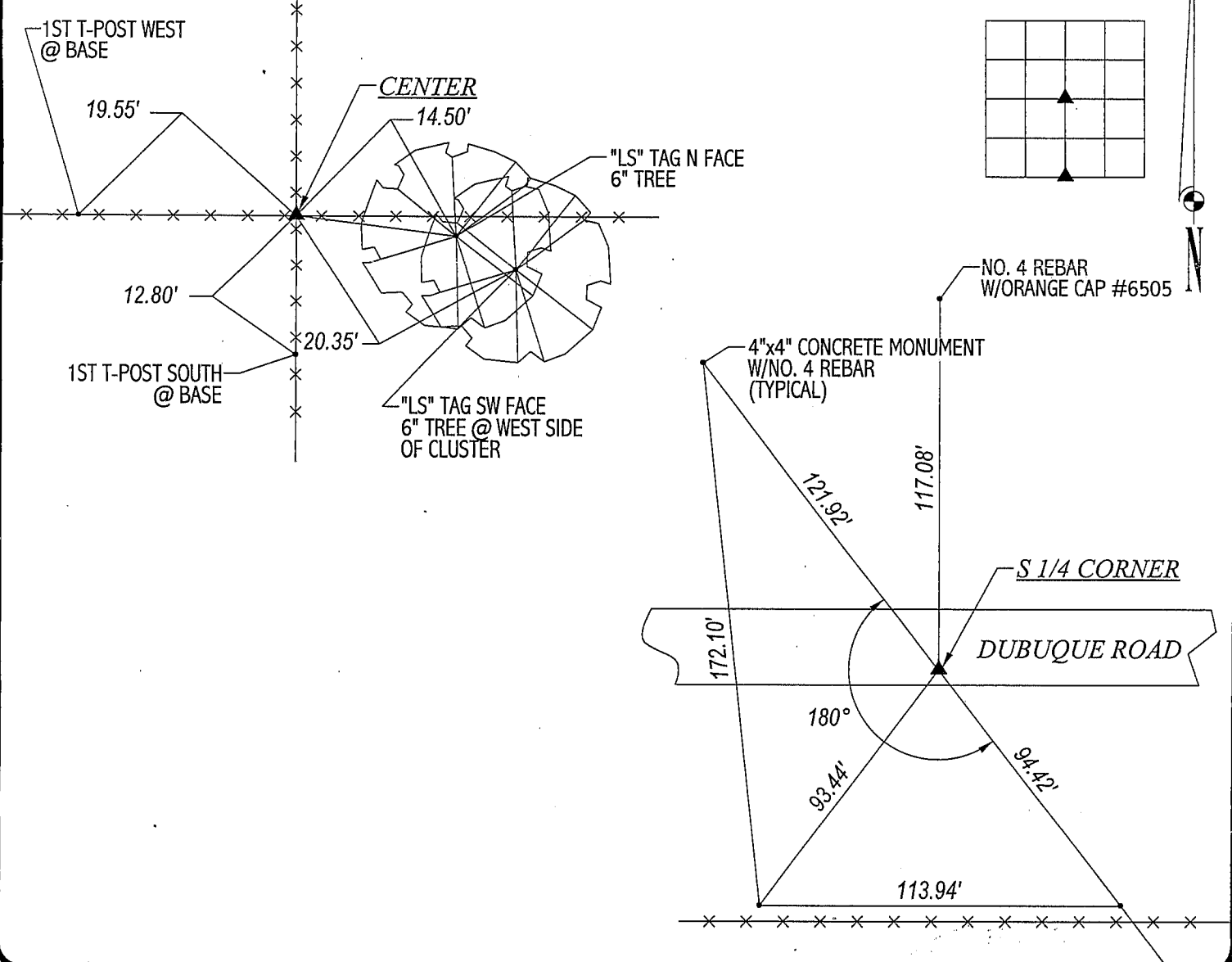
SURVEY DONE IN SW 1/4 OF SEC. 33-T89N-R11W. SECTION NO. OF 32 IN 335 MISC. 183 SHOULD BE NO. 33.

CENTER: Found 0.2'Ø Steel Corner Post (leaning Wly), fence running N, S, W & E (used center of base
of post at ground level).

S 1/4 CORNER: Found 0.4'Ø hole 0.3' deep in A.C.C. overlay with P.C.C. beneath. I.D.O.T. marker
was missing. Poured P.C.C. in hole and set Mag nail from tie monuments, corner is 7.0' South of centerline
of Dubuque Road.

PLAN VIEW

(SHOW A MINIMUM OF THREE REFERENCE TIES TO DURABLE PHYSICAL OBJECTS, RELEVANT MONUMENTS AND PHYSICAL
CONDITIONS THAT WILL ENABLE RECOVERY OF THE CORNER.)



HES

HELLAND ENGINEERING & SURVEYING, LTD.
1107 Technology Parkway
Cedar Falls, Iowa 50613-6951
(319)-266-0161

FILE NAME: 99-142C1.DRG



I hereby certify that this land surveying document was prepared
and the related survey work was performed by me or under my
direct personal supervision and that I am a duly licensed Land
Surveyor under the laws of the State of Iowa.

Paul H. Helland 3/24/00
Paul H. Helland
License Number 6505
My license renewal date is December 31, 2001.
All pages or sheets are covered by this seal except:

LIST CORNERS TO BE INDEXED			
CORNER	SECTION	TOWNSHIP	RANGE
CENTER	33	89N	11W
S 1/4 CORNER	33	89N	11W

BOOK **338** PAGE **226**

Rec