

13274
BLACK HAWK COUNTY IOWA:SS FILED FOR RECORD
JAN 22 1996 AT 11:30 A M, AND RECORDED
IN Misc BOOK 319 PAGE 305.
Patricia J. Sass RECORDER
FEE 1- 5.00/
WAYNE CLAASSEN ENGINEERING & SURVEYING INC

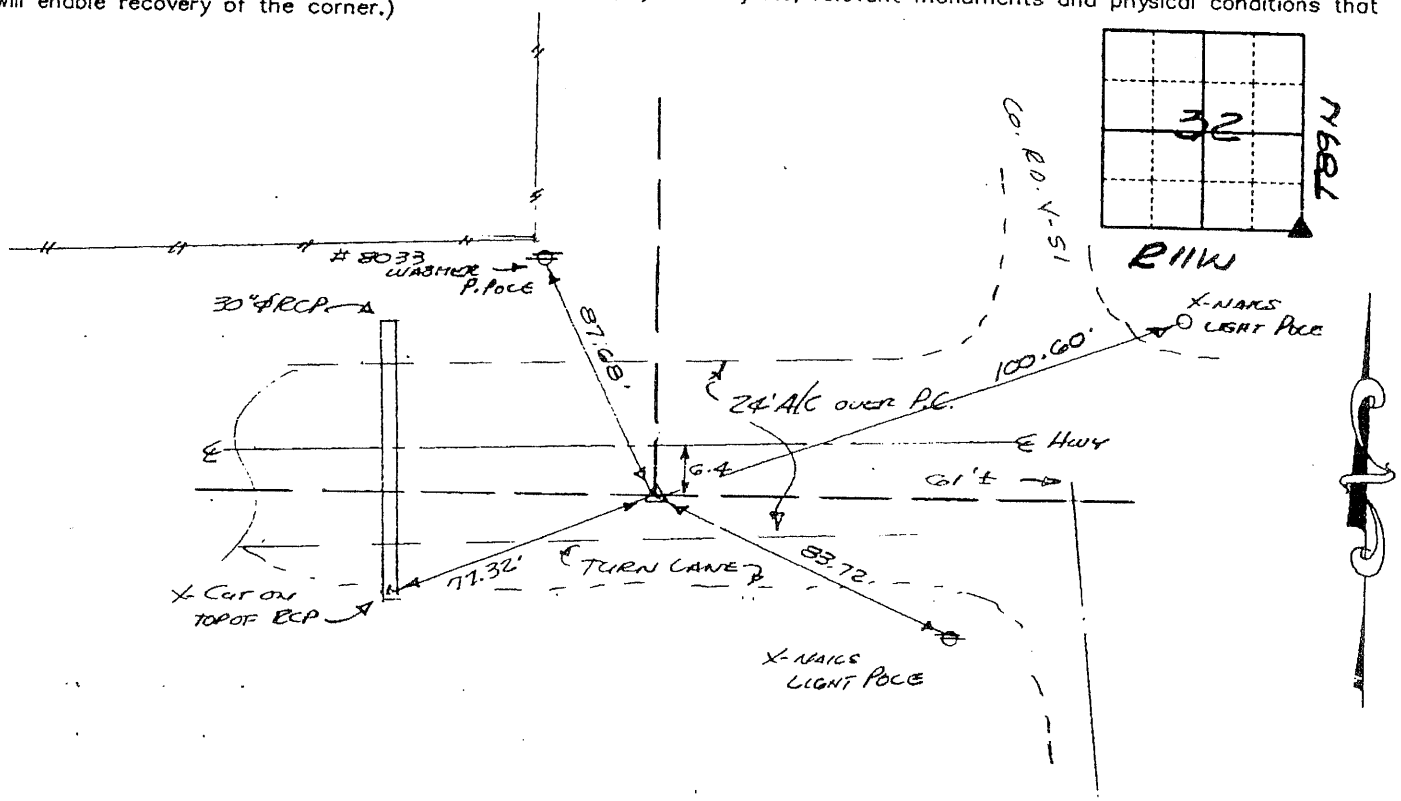
PHONE: (VOICE) 319-235-6294
(FAX) 319-235-0028

Land Survey Monuments situated in Section 32, Township 89N, Range R11W, of the Fifth Principal Meridian, BLACK HAWK County, Iowa.
Previously recorded in N/A (book, page, document number, etc.) in County Recorder's Office.

(Show reason for preparing this certificate, the evidence and detailed procedures used in establishing the corner positions and monumentation found or placed.)

Monument Description and Remarks FOUND 2 1/2" Ø D.O.T. DISK IN ASPHALT OVERLAY
PER D.O.T. DESCRIPTION LD 116-577 (2645' EAST OF 5 1/4 COR SEC 32 @ 6.4' SOUTH
OF E HIGHWAY)

(Show a minimum of three reference ties to durable physical objects, relevant monuments and physical conditions that will enable recovery of the corner.)



I hereby certify that the survey work was completed and this certificate was prepared by me or under my direct personal supervision and that I am a duly registered land surveyor under the laws of the state of Iowa.

Date: 1-18-1996 Reg. No. 8033

List Corners to be Indexed

Corners	Section	Tw	Range
SE	32	59N	11W

BOOK 319 PAGE 305